

MODELS

DS 12DVF3

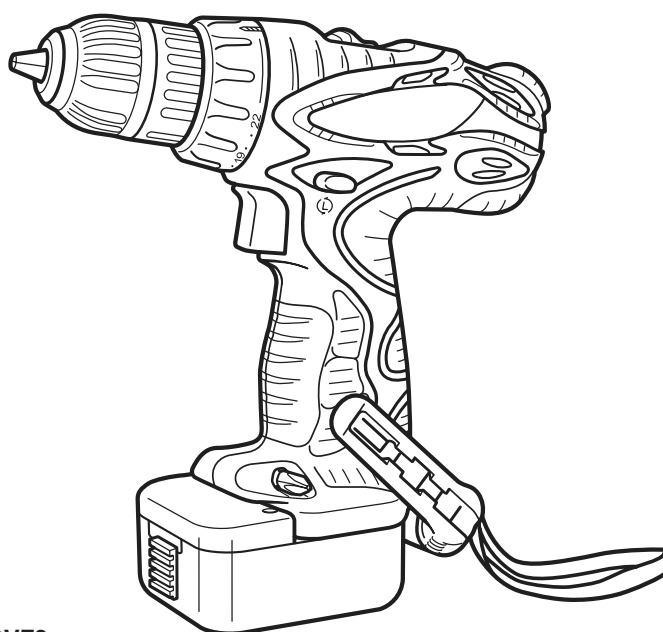
DS 9DVF3

Hitachi **Power Tools**

CORDLESS DRIVER DRILLS **DS 12DVF3** **DS 9DVF3**

TECHNICAL DATA **AND** **SERVICE MANUAL**

D



DS 12DVF3

LIST Nos. DS 12DVF3: G818
DS 9DVF3: G817

Mar. 2005

REMARK:

Throughout this TECHNICAL DATA AND SERVICE MANUAL, a symbol(s) is(are) used in the place of company name(s) and model name(s) of our competitor(s). The symbol(s) utilized here is(are) as follows:

Symbols Utilized	Competitors	
	Company Name	Model Name
C	MAKITA	6227D, 6226D
B	BOSCH	GSR12V, GSR9.6V



CONTENTS

	Page
1. PRODUCT NAME	1
2. MARKETING OBJECTIVE	1
3. APPLICATIONS	1
4. SELLING POINTS	1
4-1. Selling Point Descriptions	2
5. SPECIFICATIONS	4
5-1. DS 12DVF3	4
5-2. DS 9DVF3	5
6. COMPARISONS WITH SIMILAR PRODUCTS	6
6-1. DS 12DVF3	6
6-2. DS 9DVF3	7
7. WORKING PERFORMANCE PER SINGLE CHARGE	8
7-1. DS 12DVF3	8
7-2. DS 9DVF3	9
8. PRECAUTIONS IN SALES PROMOTION	10
8-1. Safety Instructions	10
8-2. Inherent Drawbacks of Cordless Driver Drills Requiring Particular Attention During Sales Promotion	12
9. REFERENCE MATERIALS	13
10. REPAIR GUIDE	14
10-1. Precautions in Disassembly and Reassembly	14
10-2. Precautions in Disassembly and Reassembly of Battery Charger	21
11. STANDARD REPAIR TIME (UNIT) SCHEDULES	22
Assembly Diagram for DS 12DVF3	
Assembly Diagram for DS 9DVF3	

1. PRODUCT NAME

Hitachi 12 V Cordless Driver Drill, Model DS 12DVF3

Hitachi 9.6 V Cordless Driver Drill, Model DS 9DVF3

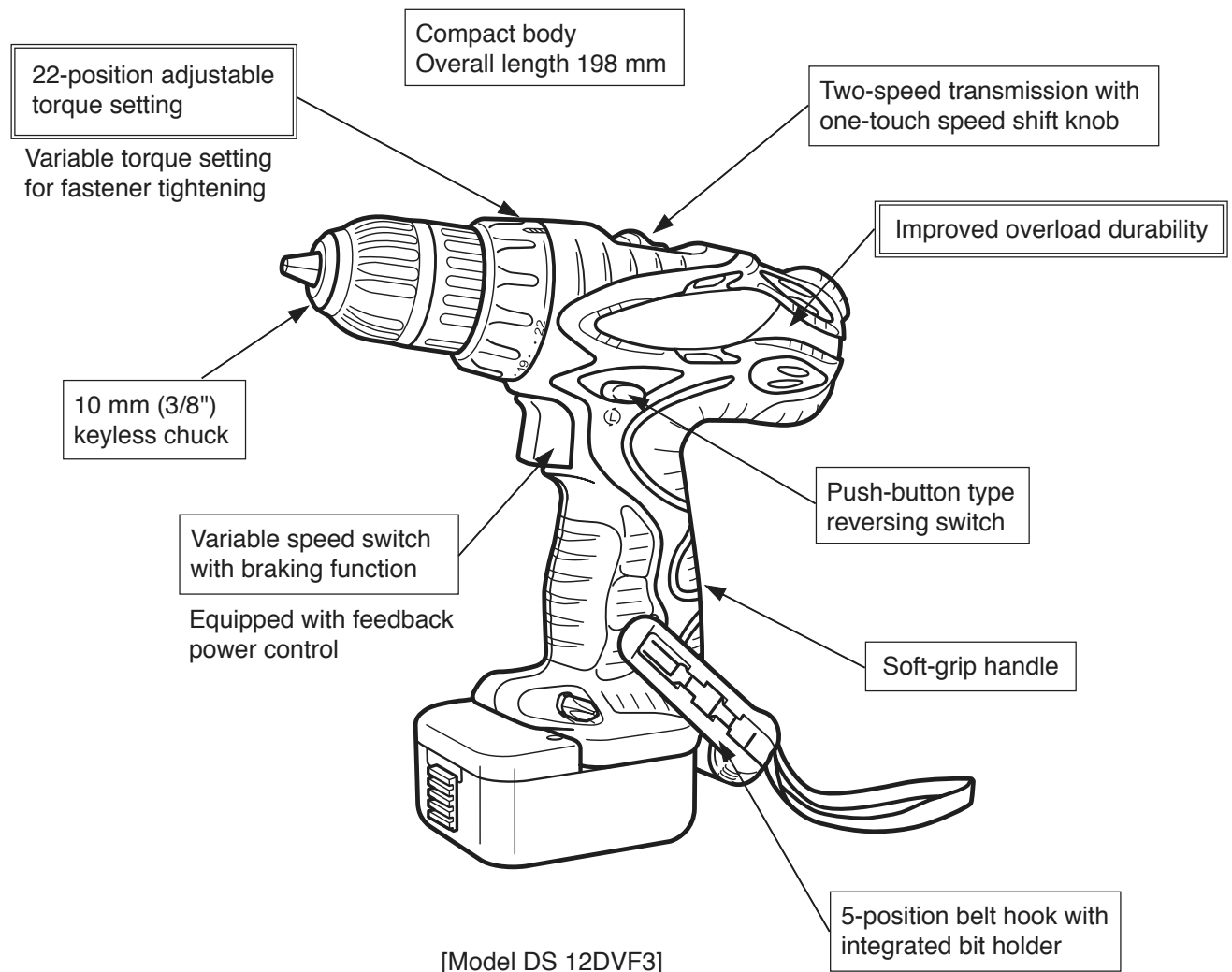
2. MARKETING OBJECTIVE

The current Models DS 12DVF2 and DS 9DVF2 are popular as reasonable professional-use cordless driver drills. However, about one year has already passed since the sales start. To cope with this situation, the above two models are upgraded to the more convenient and stylish Models DS 12DVF3 (12 V) and DS 9DVF3 (9.6 V) at the same time.

3. APPLICATIONS

- Tightening and loosening wood screws, self-tapping screws and machine screws
- Drilling into wood materials, plastic, mild steel and aluminum

4. SELLING POINTS



4-1. Selling Point Descriptions

4-1-1. Improved overload durability

The cooling fan incorporated in the motor and the air vents provided in its outer frame greatly enhance the cooling effect, ensuring improved durability in continuous operation.

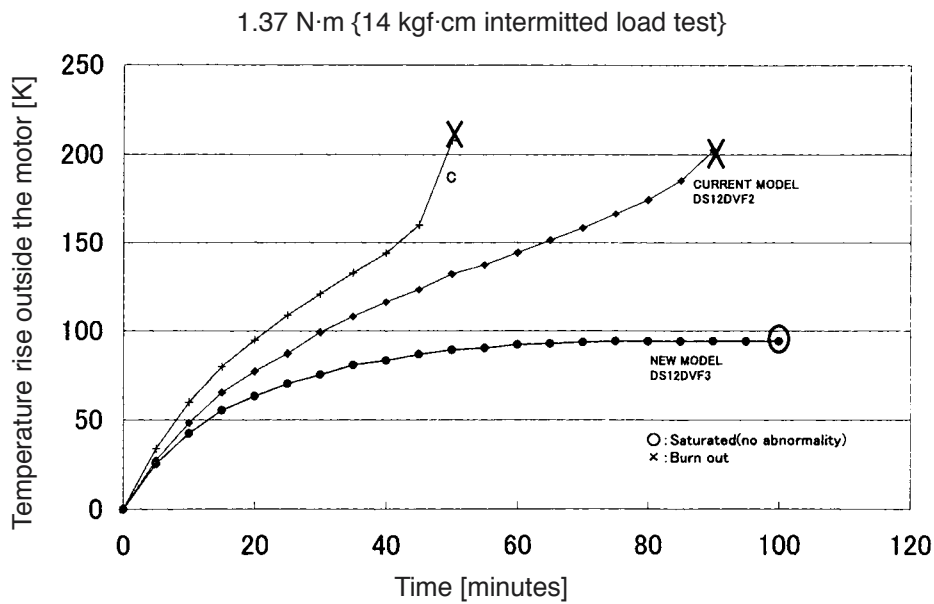


Fig. 1

4-1-2. Soft-grip handle

The grip of the Models DS 12DVF3 and DS 9DVF3 is soft, slip-resistant and comfortable thanks to the soft resin (elastomer) covered on the handle.

4-1-3. 22-position adjustable torque setting

The torque can be set finely thanks to the adoption of the 22 clutch positions to improve the operability.

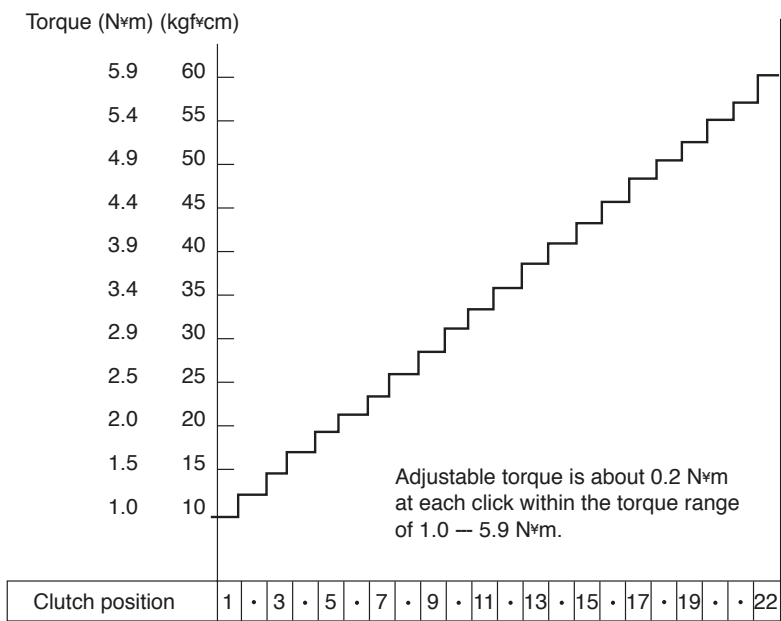


Fig. 2 Clutch torque

4-1-4. 10 mm (3/8") keyless chuck

The keyless chuck facilitates fast and easy replacement of driver bits. Replacement can be carried out simply by holding the ring with one hand, while turning the sleeve with the other hand.

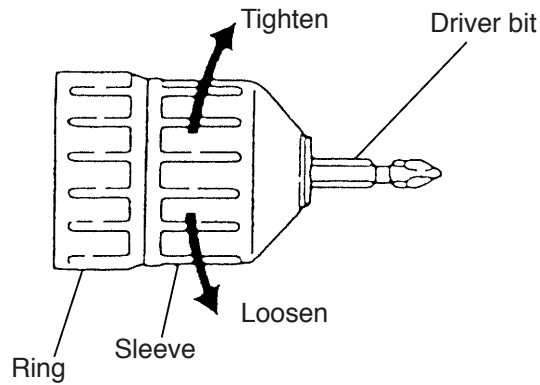


Fig. 3

4-1-5. Variable speed switch with braking function

The braking function allows the driver unit to stop rotation immediately when the trigger switch is released, which is a convenient feature during actual working. Also, the feedback system ensures a sufficiently large torque even in the variable speed range.

5. SPECIFICATIONS

5-1. DS 12DVF3

Capacity	Screwdriver	Machine screw 6 mm (1/4") Wood screw 5.8 mm dia. x 63 mm (#12 x 2-1/2")
	Drill	Metal Mild steel 12 mm (15/32") [Thickness 1.6 mm (1/16")] Aluminum 15 mm (19/32") [Thickness 1.6 mm (1/16")] Wood 25 mm (1") [Thickness 18 mm (11/16")]
Keyless chuck (10TLRF-N)		Mount type Screw-on (UNF 3/8" – 24) Diameter 0.8 – 10 mm (1/32" – 3/8")
Rotation speed		Low: 0 – 350/min, High: 0 – 1,050/min
Torque		Slip torque 1.0 – 5.9 N·m (10 – 60 kgf·cm, 9 – 52 in-lbs.) [22 stages] Max. torque 26 N·m (265 kgf·cm, 230 in-lbs.)
Type of motor		DC magnet motor
Type of switch		Trigger switch with change lever for CW* and CCW** rotation
Handle configuration		T-type (with soft-grip handle)
Enclosure		Body Glassfiber reinforced polycarbonate resin (black) and thermoplastic elastomer (green) Battery ABS resin (black) Charger ABS resin (black)
Battery (Type EB 1214S /EB 1220BL)	Kind of battery	Sealed cylindrical nickel cadmium storage battery
	Nominal battery	DC 12 V
	Nominal life	Charging/discharging: approximately 300 times/500 times
	Nominal capacity	1.4 Ah/2.0 Ah
	Charging time	30 minutes (with standard accessory charger at ambient temperature of 20 °C)
	Charging temperature	10 °C – 40 °C (50 °F – 104 °F)
Charger (Model UC 18YG)		<ul style="list-style-type: none"> Overcharge prevention circuit: A thermostat monitors the surface temperature of the battery and, on detecting the temperature rise which occurs on completion of charging, automatically turns off the unit to prevent the battery from overcharge. Input capacity: 70 W Indication method: Pilot lamp indicator of battery charging Function: On During charging Off Charging completed
Weight	Net	Main body (including battery EB 1214S) 1.5 kg (3.3 lbs.) Main body (including battery EB 1220BL) 1.6 kg (3.5 lbs.) Charger unit (including cord) 0.3 kg (0.7 lbs.)
	Gross	DS 12DVF2 (2SGX) (With EB 1214S) 4.4 kg (9.7 lbs.) DS 12DVF2 (3SGK) (With EB 1214S) 4.6 kg (10.1 lbs.) DS 12DVF2 (2BLGK) (With EB 1220BL) 4.5 kg (9.9 lbs.)
Standard accessories	2SGX	Charger (UC 18YG) 1
		Battery (EB 1214S) 2
		Phillips (plus) driver bit (No. 2) 1
		Case 1
		Bit set 1
		Torchlight (UB 12D) 1
	3SGK	Charger (UC 18YG) 1
		Battery (EB 1214S) 3
		Phillips (plus) driver bit (No. 2) 1
	2BLGK	Case 1
		Bit set 1
		Charger (UC 18YG) 1
	2BLGK	Battery (EB 1220BL) 2
		Phillips (plus) driver bit (No. 2) 1
		Case 1

CW*: Clockwise

CCW**: Counterclockwise

5-2. DS 9DVF3

Capacity	Screwdriver	Machine screw 6 mm (1/4") Wood screw 5.8 mm dia. x 45 mm (#12 x 1-25/32")
	Drill	Metal Mild steel 10 mm (3/8") [Thickness 1.6 mm (1/16")] Aluminum 12 mm (15/32") [Thickness 1.6 mm (1/16")] Wood 21 mm (13/16") [Thickness 18 mm (11/16")]
Keyless chuck (10TLRF-N)		Mount type Screw-on (UNF 3/8" – 24) Diameter 0.8 – 10 mm (1/32" – 3/8")
Rotation speed		Low: 0 – 280/min, High: 0 – 840/min
Torque		Slip torque 1.0 – 5.9 N·m (10 – 60 kgf·cm, 9 – 52 in-lbs.) [22 stages] Max. torque 22 N·m (224 kgf·cm, 195 in-lbs.)
Type of motor		DC magnet motor
Type of switch		Trigger switch with change lever for CW* and CCW** rotation
Handle configuration		T-type (with soft-grip handle)
Enclosure		Body Glassfiber reinforced polycarbonate resin (black) and thermoplastic elastomer (green) Battery ABS resin (black) Charger ABS resin (black)
Battery (Type EB 914S)	Kind of battery	Sealed cylindrical nickel cadmium storage battery
	Nominal battery	DC 9.6 V
	Nominal life	Charging/discharging: approximately 300 times
	Nominal capacity	1.4 Ah
	Charging time	30 minutes (with standard accessory charger at ambient temperature of 20 °C)
	Charging temperature	10 °C – 40 °C (50 °F – 104 °F)
Charger (Model UC 18YG)		<ul style="list-style-type: none"> Overcharge prevention circuit: A thermostat monitors the surface temperature of the battery and, on detecting the temperature rise which occurs on completion of charging, automatically turns off the unit to prevent the battery from overcharge. Input capacity: 70 W Indication method: Pilot lamp indicator of battery charging Function: On During charging Off Charging completed
Weight	Net	Main body (including battery EB 914S) 1.4 kg (3.1 lbs.) Charger unit (including cord) 0.3 kg (0.7 lbs.)
	Gross	DS 9DVF3 (2SGX) (With EB 914S) 4.1 kg (9.0 lbs.) DS 9DVF3 (2SGK) (With EB 914S) 3.8 kg (8.4 lbs.)
Standard accessories	2SGX	Charger (UC 18YG) 1 Battery (EB 914S) 2 Phillips (plus) driver bit (No. 2) 1 Case 1 Bit set 1 Torchlight (UB 12D) 1
	2SGK	Charger (UC 18YG) 1 Battery (EB 914S) 2 Phillips (plus) driver bit (No. 2) 1 Case 1

CW*: Clockwise

CCW**: Counterclockwise

6. COMPARISONS WITH SIMILAR PRODUCTS

6-1. DS 12DVF3

Maker			HITACHI		C	B
Model name			DS 12DVF3	DS 12DVF2		
Max. capacity	Screwing	Machine screw	6 mm (1/4")	6 mm (1/4")	Not indicated	Not indicated
		Wood screw	5.8 mm dia. x 63 mm (#12 x 2-1/2")	5.5 mm dia. x 63 mm (#12 x 2-1/2")	5.1 mm dia. x 63 mm (#11 x 2-1/2")	7 mm dia. (#16)
	Drilling	Mild steel	12 mm (15/32")	12 mm (15/32")	10 mm (3/8")	11 mm (7/16")
		Aluminum	15 mm (19/32")	15 mm (19/32")	Not indicated	Not indicated
		Soft wood	25 mm (1")	21 mm (13/16")	24 mm (15/16")	25 mm (1")
Rotation speed (/min.)		Low	0 – 350	0 – 350	0 – 350	0 – 400
		High	0 – 1,050	0 – 1,050	0 – 1,100	0 – 1,200
Slip torque			1.0 – 5.9 N·m 10 – 60 kgf·cm (9 – 52 in-lbs.)	1.0 – 5.9 N·m 10 – 60 kgf·cm (9 – 52 in-lbs.)	Not indicated	1 – 8 N·m 10 – 82 kgf·cm (9 – 71 in-lbs.)
			[22 stages]	[22 stages]		[16 stages]
Max. torque			26 N·m (265 kgf·cm) (230 in-lbs.)	26 N·m (265 kgf·cm) (230 in-lbs.)	22 N·m (224 kgf·cm) (195 in-lbs.)	19 N·m (194 kgf·cm) (168 in-lbs.)
Max. torque (Hard) (Actually measured value)			34 N·m (349 kgf·cm) (303 in-lbs.)	34 N·m (349 kgf·cm) (303 in-lbs.)	Can not measure (Slip)	47 N·m (481 kgf·cm) (418 in-lbs.)
Battery	Nominal capacity		1.4 Ah	1.4 Ah	1.3 Ah	1.3 Ah
	Nominal voltage		12 V	12 V	12 V	12 V
	Charging time*		30 min. (Model UC 18YG)	60 min. (Model UC 12SD)	60 min.	60 min.
Drill chuck	Capacity		10 mm (3/8")	10 mm (3/8")	10 mm (3/8")	10 mm (3/8")
	Type		Double sleeve	Double sleeve	Double sleeve	Single sleeve
Spindle lock function			None	None	None	Equipped
Soft-grip handle			Equipped	Equipped	None	Equipped
Switch	Feedback circuit		Equipped	Equipped	Equipped	Equipped
	Electric brake		Equipped	Equipped	Equipped	Equipped
Dimesions	Overall length		198 mm (7-3/4")	220 mm (8-21/32")	220 mm (8-21/32")	228 mm (8-31/32")
	Overall height		221 mm (8-3/4")	234 mm (9-7/32")	233 mm (9-11/64")	238 mm (9-3/8")
Weight			1.5 kg (3.3 lbs.)	1.6 kg (3.5 lbs.)	1.5 kg (3.3 lbs.)	1.6 kg (3.5 lbs.)

Remarks* Charging time may vary depending on the type of charger to be used.

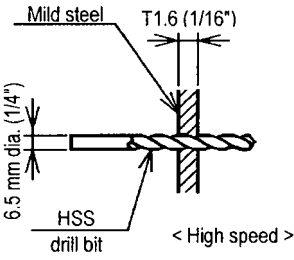
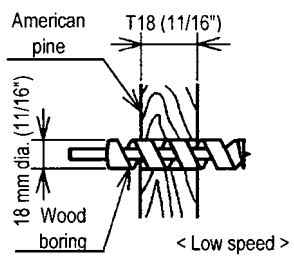
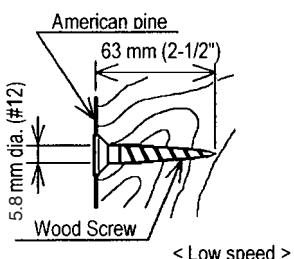
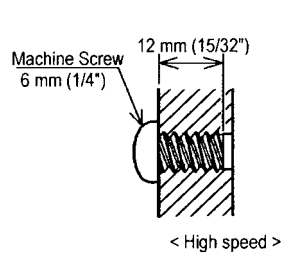
6-2. DS 9DVF3

Maker			HITACHI		C	B
Model name			DS 9DVF3	DS 9DVF2		
Max. capacity	Screwing	Machine screw	6 mm (1/4")	6 mm (1/4")	Not indicated	Not indicated
		Wood screw	5.8 mm dia. x 45 mm (#12 x 1-25/32")	5.5 mm dia. x 45 mm (#12 x 1-25/32")	5.1 mm dia. x 38 mm (#11 x 1-1/2")	6 mm dia. (#14)
	Drilling	Mild steel	10 mm (3/8")	10 mm (3/8")	10 mm (3/8")	10 mm (3/8")
		Aluminum	12 mm (15/32")	12 mm (15/32")	Not indicated	Not indicated
		Soft wood	21 mm (13/16")	18 mm (23/32")	21 mm (13/16")	20 mm (3/4")
Rotation speed (/min.)		Low	0 – 280	0 – 280	0 – 350	0 – 300
		High	0 – 840	0 – 840	0 – 1,100	0 – 1,100
Slip torque			1.0 – 5.9 N·m 10 – 60 kgf·cm (9 – 52 in-lbs.)	1.0 – 5.9 N·m 10 – 60 kgf·cm (9 – 52 in-lbs.)	Not indicated	1 – 8 N·m 10 – 82 kgf·cm (9 – 71 in-lbs.)
			[22 stages]	[22 stages]		[16 stages]
Max. torque			22 N·m (224 kgf·cm) (195 in-lbs.)	22 N·m (224 kgf·cm) (195 in-lbs.)	19 N·m (194 kgf·cm) (168 in-lbs.)	15 N·m (153 kgf·cm) (133 in-lbs.)
Max. torque (Hard) (Actually measured value)			29 N·m (295 kgf·cm) (256 in-lbs.)	29 N·m (295 kgf·cm) (256 in-lbs.)	Can not measure (Slip)	29 N·m (297 kgf·cm) (258 in-lbs.)
Battery	Nominal capacity		1.4 Ah	1.4 Ah	1.3 Ah	1.3 Ah
	Nominal voltage		9.6 V	9.6 V	9.6 V	9.6 V
	Charging time*		30 min. (Model UC 18YG)	60 min. (Model UC 9SD)	60 min.	60 min.
Drill chuck	Capacity		10 mm (3/8")	10 mm (3/8")	10 mm (3/8")	10 mm (3/8")
	Type		Double sleeve	Double sleeve	Double sleeve	Single sleeve
Spindle lock function			None	None	None	Equipped
Soft-grip handle			Equipped	Equipped	None	Equipped
Switch	Feedback circuit		Equipped	Equipped	Equipped	Equipped
	Electric brake		Equipped	Equipped	Equipped	Equipped
Dimesions	Overall length		198 mm (7-3/4")	220 mm (8-21/32")	220 mm (8-21/32")	228 mm (8-31/32")
	Overall height		215 mm (8-1/2")	229 mm (9-1/64")	233 mm (9-11/64")	238 mm (9-3/8")
Weight			1.4 kg (3.1 lbs.)	1.5 kg (3.3 lbs.)	1.4 kg (3.1 lbs.)	1.5 kg (3.3 lbs.)

7. WORKING PERFORMANCE PER SINGLE CHARGE

Drilling and fastening performance comparison per charge

7-1. DS 12DVF3

Type of work	Maker	Model name	Working capacity (*1)					Drilling speed (sec./pc.)
			*0 0	*300 50	*600 100	*900 150	*1200 200	
	HITACHI	DS 12DVF3	65					9.1
		DS 12DVF2	65					9.1
	C		60					9.7
	B		40					9.8
	HITACHI	DS 12DVF3	175					4.2
		DS 12DVF2	175					4.2
	C		155					4.8
	B		115					4.3
	HITACHI	DS 12DVF3	85					4.8
		DS 12DVF2	85					5.0
	C		65					6.1
	B		65					5.1
	HITACHI	DS 12DVF3	*875					0.8
		DS 12DVF2	*900					0.8
	C		*1060					0.9
	B		*555					0.9

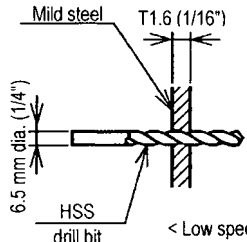
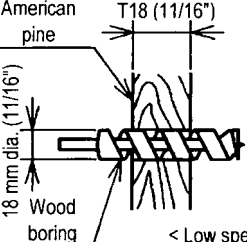
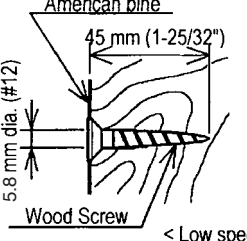
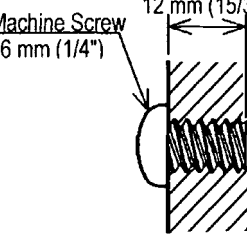
Remarks*: Number of machine screws fastened per charge

Remarks*1: Number of holes or fasteners per charge

The above table shows an example of test data obtained using the battery which is standard for this tool.

As actually measured values listed in the above table may vary depending on the sharpness of the drill bit, workpiece hardness (particularly in wood materials), moisture content of wood, charging condition, operator skill, etc. This data should be used as a comparative guide only.

7-2. DS 9DVF3

Type of work	Maker	Model name	Working capacity (*1)					Drilling speed (sec./pc.)
			*0 0	*300 50	*600 100	*900 150	*1200 200	
	HITACHI	DS 9DVF3	45					26.9
		DS 9DVF2	45					26.9
	C		35					22.1
	B		35					23.2
	HITACHI	DS 9DVF3		125				5.4
		DS 9DVF2		125				5.4
	C			100				5.4
	B			100				5.8
	HITACHI	DS 9DVF3		120				4.4
		DS 9DVF2		120				4.4
	C			105				4.3
	B			100				4.2
	HITACHI	DS 9DVF3		*755				1.0
		DS 9DVF2		*780				1.0
	C			*925				1.0
	B			*575				1.0

Remarks*: Number of machine screws fastened per charge

Remarks*1: Number of holes or fasteners per charge

The above table shows an example of test data obtained using the battery which is standard for this tool.

As actually measured values listed in the above table may vary depending on the sharpness of the drill bit, workpiece hardness (particularly in wood materials), moisture content of wood, charging condition, operator skill, etc. This data should be used as a comparative guide only.

8. PRECAUTIONS IN SALES PROMOTION

8-1. Safety Instructions

In the interest of promoting the safest and most efficient use of the Models DS 12DVF3 and DS 9DVF3 Cordless Driver Drills by all of our customers, it is very important that at the time of sale, the salesperson carefully ensures that the buyer seriously recognizes the importance of the contents of the Handling Instructions, and fully understands the meaning of the precautions listed on the Caution Plate and Name Plate attached to each tool.

A. Handling Instructions

Salespersons must be thoroughly familiar with the contents of the Handling Instructions in order to give pertinent advice to the customer. In particular, they must have a thorough understanding of the precautions for use of the cordless tools which are different from those of ordinary electric power tools.

- (1) Before use, ensure that the unit is fully charged.

New units are not fully charged. Even if the units were fully charged at the factory, long periods of inactivity, such as during shipping, cause the storage battery to lose its charge. Customers must be instructed to fully charge the unit prior to use.

- (2) When charging storage batteries, use only the exclusive Model UC 18YG Charger provided with the tool.

Because of the designed rapid-charging feature (about 30 minutes), use of other battery chargers is hazardous.

- (3) Connect the Charger to an AC power outlet only.

Use of any other power source (DC outlet, fuel powered generator, etc.) will cause the Charger to overheat and burn out.

- (4) Do not use any voltage increasing equipment (transformer etc.) between the power source and the Charger.

If the Charger is used with voltage higher than that indicated on the unit, it will not function properly.

- (5) Conduct battery charging at an ambient temperature range of 10 °C – 40 °C (50 °F – 104 °F).

Special temperature sensitive devices are employed in the Charger to permit rapid charging. Ensure that customers are instructed to use the Charger at the indicated ambient temperature range. At temperature under 10 °C (50 °F) the thermostat will not function properly, and the storage battery may be overcharged. At temperature over 40 °C (104 °F), the storage battery cannot be sufficiently charged. The optimum temperature range is 20 °C – 25 °C (68 °F – 77 °F).

- (6) The battery charger should not be used continuously.

At high ambient temperature, if over three storage batteries are charged in succession, the temperature of the coils on the transformer will rise and there is a chance that the temperature fuse inserted in the interior of the transformer will inadvertently melt. After charging one battery, please wait about 15 minutes before charging the next battery.

(7) Do not insert foreign objects into the air vents on the Charger

The Charger case is equipped with air vents to protect the internal electronic components from overheating. Caution the customer not to allow foreign materials, such as metallic or flammable objects, to be dropped or inserted into the air vents. This could cause electrical shock, fire, or other serious hazards.

(8) Do not attempt to disassemble the Storage Battery or the Charger.

Special devices, such as a thermostat, are built into the storage battery and charger to permit rapid charging. Incorrect parts replacement and/or wiring will cause malfunctions which could result in fire or other hazards. Instruct the customer to bring these units to an authorized service center in the event repair or replacement is necessary.

(9) Disposal of the Storage Batteries (Types EB 1214S and EB 914S)

Ensure that all customers understand that Types EB 1214S and EB 914S Storage Batteries should be returned to the Hitachi power tool sales outlet or the authorized service center when they are no longer capable of being recharged or repaired. If thrown into a fire, the batteries may explode, or, if discarded indiscriminately, leakage of the cadmium compound contained in the battery may cause environmental pollution.

B. Caution Plate

The following cautions are listed on the Name Plate attached to each of Types EB 1214S and EB 914S Storage Batteries.

For Europe

CAUTION • Read thoroughly HANDLING INSTRUCTIONS before use. • Do not disassemble nor throw into fire.

8-2. Inherent Drawbacks of Cordless Driver Drills Requiring Particular Attention During Sales Promotion

The cordless driver drill offers many advantages; it can be used in places where no power source is available, the absence of a cord allows easy use, etc. However, any cordless tool has certain inherent drawbacks.

Salespersons must be thoroughly familiar with these drawbacks in order to properly advise the customer in the most efficient use of the tool.

A. Suggestions and precautions for the efficient use of the tool

(1) Use the Cordless Driver Drill for comparatively light work.

Because they are battery driven, the output of the motor in cordless driver drills is rather low in comparison with conventional electric power tools. Accordingly, they are not suitable for continuous drilling of many holes in succession, or for drilling into particularly hard materials which creates a heavy load. Salespersons should recommend conventional electric power tools for such heavy work.

(2) Drilling of large diameter holes should be conducted at low speed.

Instruct the customer that drilling of large diameter holes or other work which requires particularly strong torque should be done at low speed. Because there is less torque at high speed, attempting such work at high speed will not improve working efficiency.

(3) Do not insert a foreign object into body vent holes.

The body of this tool has vent holes for improving the cooling efficiency. As a fan is built into the motor, a foreign object inserted through a vent hole may cause a failure. Please instruct customers to never insert a foreign object into the vent hole.

(4) Avoid "Locking" of the motor.

Locking of the motor will cause an overload current that could result in burning of the motor and/or rapid deterioration of the battery. Salespersons should advise the customer to immediately release the switch and stop operation if the motor becomes locked. (A jammed drill bit can be disengaged from the workpiece material by setting the switch to reverse rotation, or by manually turning the main body of the tool.)

(5) Variation in amount of work possible per charge

Although the nominal chargeable capacity of the storage batteries used with the Models DS 12DVF3 and DS 9DVF3 are 1.4 Ah, the actual capacity may vary within 10% of that value depending on the ambient temperature during use and charging, and the number of times the batteries have been recharged. It should be noted that other factors which may have a bearing on the amount of work possible per charge are the working conditions (ambient temperature, type and moisture content of the workpiece, sharpness of the drill bit, etc.) and the operational skill of the user.

(6) Precautions in the use of HSS Drill Bits

For example, although the Model DS 12DVF3 is designed for drilling capacities of 25 mm (1") in wood, and 15 mm (19/32") in aluminum, and 12 mm (15/32") in mild steel, this capability is not as efficient as conventional electric power tools. In particular, when drilling through aluminum material with a 15 mm (19/32") drill bit, the drill tends to become locked when the drill bit penetrates through the material. For this reason, the customer should be cautioned to reduce the thrust on the main body of the drill when drilling completely through the material to avoid locking the tool. Repeated locking of the drill causes excessive current flow from the batteries which not only decreases the amount of work possible per charge, but could also result in burning of the motor.

B. Suggestions and precautions for the efficient use of the charger and storage batteries

If the Types EB 1214S, EB 1220BL and EB 914S Storage Batteries are exposed to direct sunlight for an extended period or if the tool has just been operated for a long time, charging may not be possible if the temperature of a battery is above 40 °C (104 °F). In such a case, the customer should be advised to place the battery in a shaded area with a good airflow, and allows sufficient cooling before recharging. This phenomenon is common to all existing batteries and chargers which employ temperature sensitive overcharge protection devices. The cooling time required before recharging can be accomplished varies from a few minutes to about 30 minutes, depending on the load, duration of use, and ambient temperature.

9. REFERENCE MATERIALS

Speed Control Mechanism

Spindle rotation speed of the Models DS 12DVF3 and DS 9DVF3 can be controlled by simply varying the amount by which the trigger switch is depressed. The relationship between the amount the trigger switch is depressed (in millimeters) and the rotation speed is illustrated in Fig. 4.

NOTE: The gradient and values illustrated in Fig. 4 are intended for reference only, and will vary slightly due to differences in the discharge condition of the battery, the ambient temperature, and individual speed-control element accuracy.

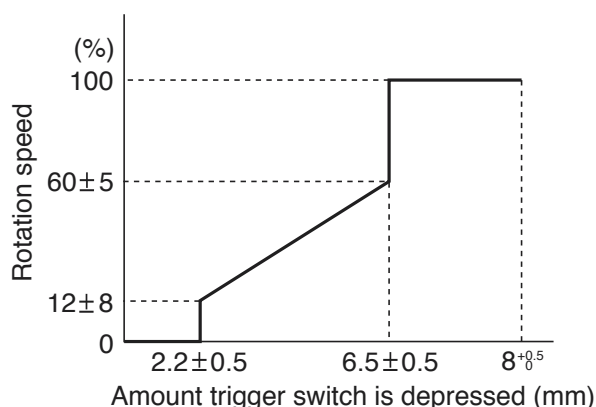


Fig. 4

10. REPAIR GUIDE

Be sure to remove the storage batteries from the main body before servicing. Inadvertent triggering of the switch with the storage battery connected will result in the danger of accidental turning of the motor.

10-1. Precautions in Disassembly and Reassembly

The **[Bold]** numbers in the description below correspond to the item numbers in the Parts List and exploded assembly diagram.

10-1-1. Disassembly

(1) Removal of the Hook Ass'y **[39]**

Remove the Special Screw M5 **[44]** with a flat-blade screwdriver or a coin. Remove the Hook Ass'y **[39]** and the Hook Spring **[43]**.

(2) Removal of Housing (A). (B) Set **[30]**

First, align the drill mark "▲" at the Clutch Dial **[4]** with the triangle mark at Housing (A). (B) Set **[30]**.

Remove the eight Tapping Screws (W/Flange) D3 x 16 (Black) **[26]** secured to the main body. Gently open housing (A) and housing (B) while holding their battery loading sections.

(3) After housing (B) has been removed, all the internal parts, assembled or separate, can be taken out as they are. Lift the entire contents from housing (A) while holding the Motor **[25]** and the Clutch Dial **[4]**.

(4) Removal of the Drill Chuck 10TLRK-N (W/O Chuck Wrench) **[2]** (See Fig. 5.)

(a) Turn the Motor **[25]** counterclockwise (when viewed from the rear) and remove it from the Rear Case **[14]**.

Remove the Shift Knob **[36]** from the Shift Arm **[16]**. Take care not to remove the Shift Arm **[16]** from the Rear Case **[14]** in this operation.

(b) Attach the motor spacer (an accessory of the special repair tool J-292, Code No. 316-379) to the assembly of the Drill Chuck 10TLRK-N (W/O Chuck Wrench) **[2]**, Clutch Dial **[4]**, Front Case **[9]** and Rear Case **[14]** then mount it in special repair tool J-292 clamped in the vise as illustrated in Fig. 5. In this operation, check that the pinion press-fitted in the special repair tool J-292 and Planet Gear (A) Set **[21]** are engaged properly.

(c) Secure the Slide Ring Gear **[17]** to the Front Case **[9]** side with the Shift Arm **[16]**.

(d) Turn the sleeve of the Drill Chuck 10TLRK-N (W/O Chuck Wrench) **[2]** counterclockwise (when viewed from the front) to fully open the jaws of the Drill Chuck 10TLRK-N (W/O Chuck Wrench) **[2]**. Turn the Special Screw (Left Hand) M5 x 27 **[1]** clockwise and remove it. (Note that the special screw is left-hand threaded.)

(e) Fit the hexagonal bar wrench M10 into the Drill Chuck 10TLRK-N (W/O Chuck Wrench) **[2]** as illustrated in Fig. 5 and remove the Drill Chuck 10TLRK-N (W/O Chuck Wrench) **[2]** by turning the hexagonal bar wrench counterclockwise.

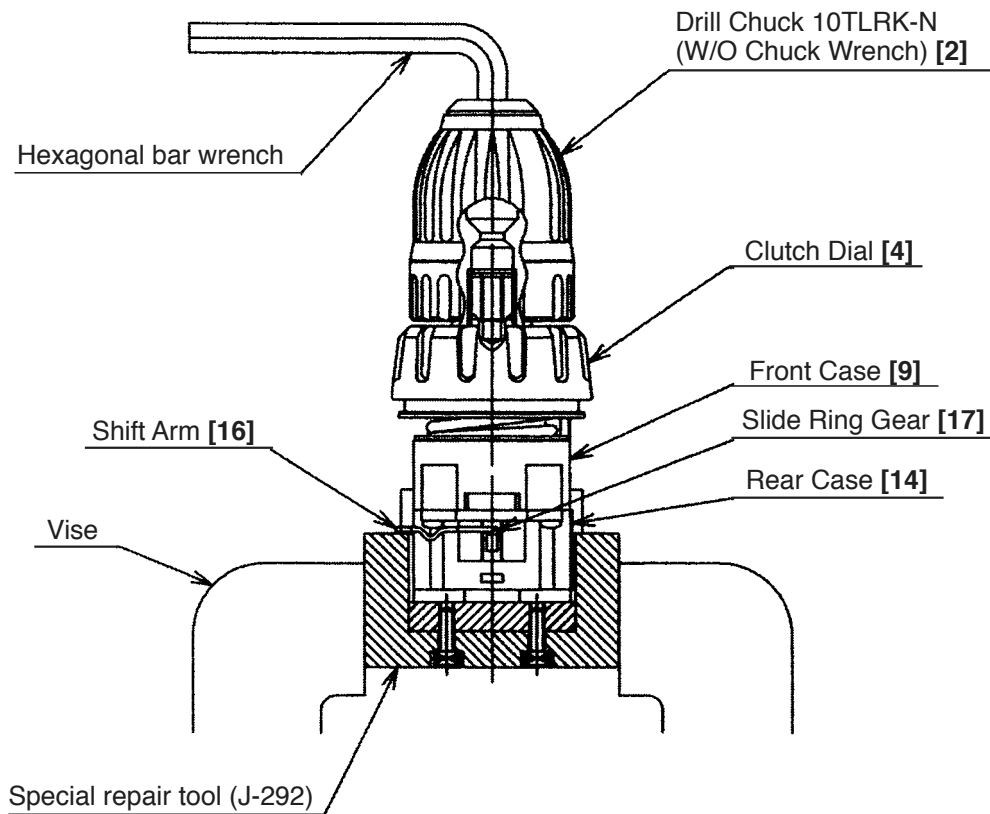


Fig. 5

(5) Disassembly of the gear unit

Remove the Shift Arm [16] from the Rear Case [14], then remove the Screw Set D3 x 12 (4 pcs.) [15] connecting the Front Case [9] and the Rear Case [14]. Remove Washer (A) [13], Planet Gear (C) Set (3 pcs.) [12], Ring Gear [11] and six Steel Balls D5 [10] from the Front Case [9] in order. Take care not to lose the six Steel Balls D5 [10] in this operation.

(6) Disassembly of the clutch unit

(a) After press up the hook of Front Case [9] with the small flat-blade screwdriver, the Clutch Dial [4] and Click Spring [5] can be taken out as they are. (See Fig. 6.)

(b) Turn the Nut [6] counterclockwise and remove it from the Front Case [9], then remove the Spring [7] and Washer (D) [8] from the Front Case [9].

NOTE: Do not remove the Front Case [9].

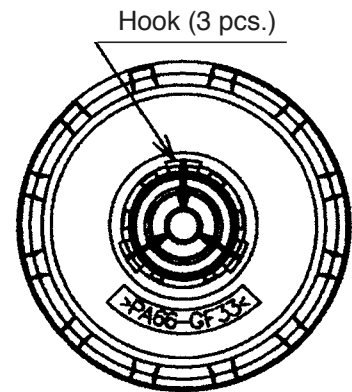


Fig. 6

(7) Disassembly of the power supply unit

NOTE: Do not remove the heat sink secured to the DC-Speed Control Switch [33] with a screw.

Remove the two Machine Screws M3 x 8 [28], and take the Motor [25] and the Motor Spacer [24] apart. Disconnect Internal Wires (B) [31] [32] from the Motor [25] with a soldering iron, then disconnect them from the DC-Speed Control Switch [33] with a soldering iron in the same manner.

10-1-2. Reassembly

Reassembly can generally be carried out as the reverse of the disassembly procedure, with some items to be noted as follows.

(1) Reassembly of the power supply unit

- (a) Perform wiring according to the wiring diagram (Fig. 7).

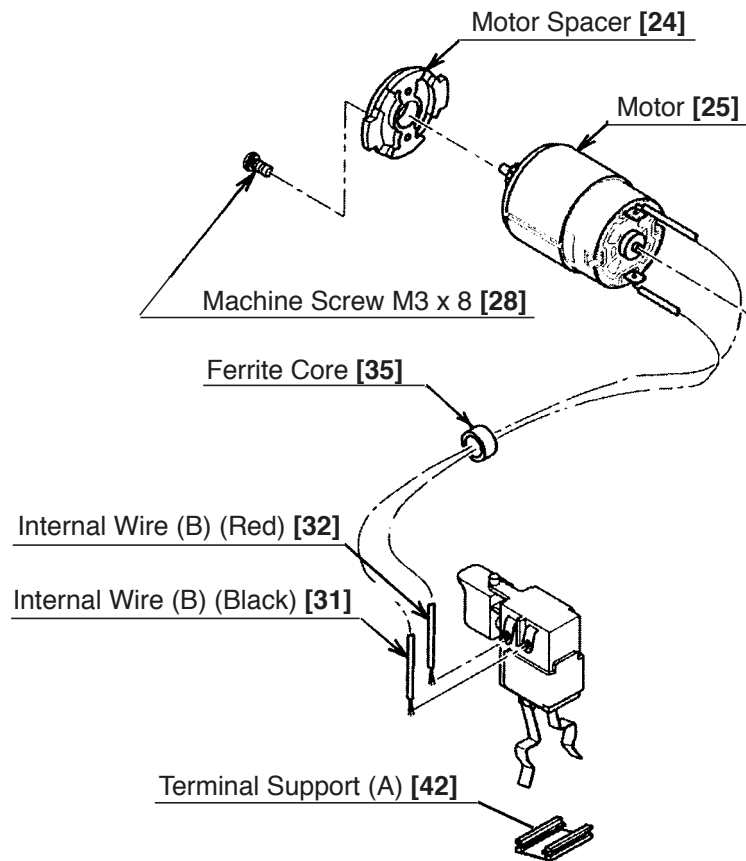


Fig. 7

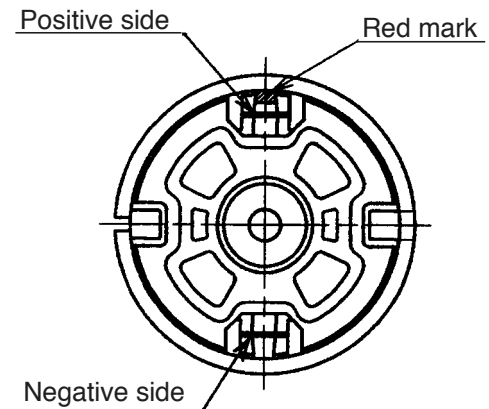


Fig. 8

- (b) Pay attention to the polarity of the Motor [25] when soldering Internal Wires (B) [31] [32] to the Motor [25].

The red-marked side of the Motor [25] is positive. (See Fig. 8.)

- (c) Apply grease (Hitachi Motor Grease No. 29, Code No. 930035 is recommended) to the pinion press-fitted on the Motor [25] shaft.

(2) Reassembly of the clutch unit

- (a) Mount Washer (D) [8] and the Spring [7] to the Front Case [9]. (See Fig. 9.)

When mounting Washer (D) [8] into the Front Case [9], align the projection on the Front Case [9] with the notch of Washer (D) [8].

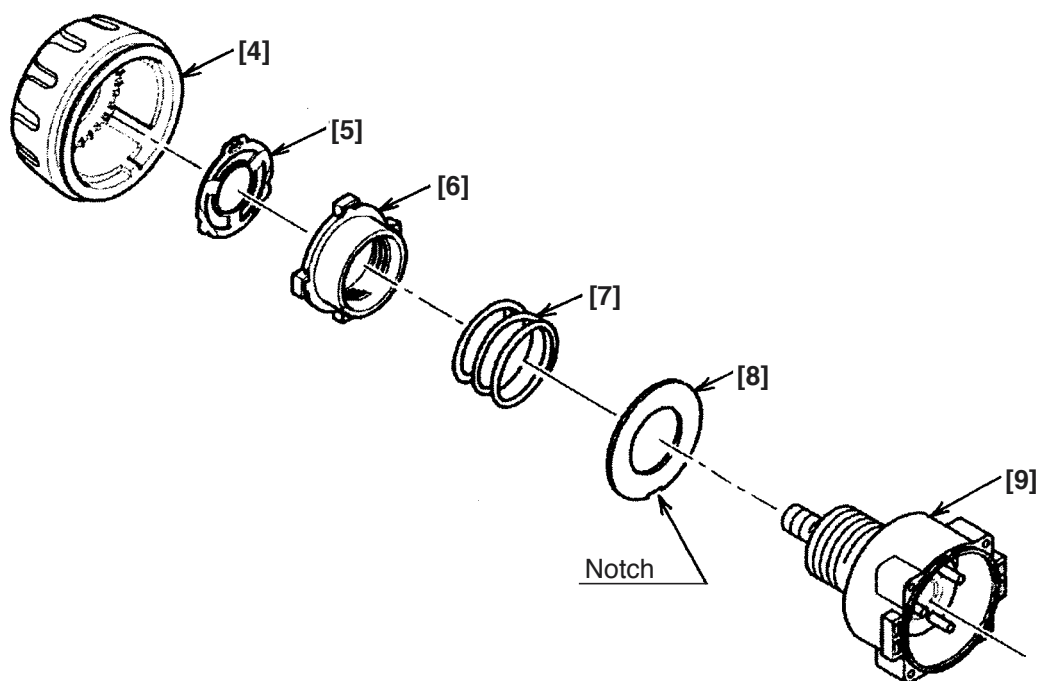


Fig. 9

(b) Mount the Nut [6] to the Front Case [9]. (See Fig. 10.)

Align the register mark (o) on the Nut [6] with the register mark on the Front Case [9]. Turn the Nut [6] about 1-1/2 turns clockwise so that the register mark (Δ) on the Nut [6] is aligned with the register mark on the Front Case [9]. Check that the Y surface of the Nut [6] is aligned with the Z surface of the Front Case [9].

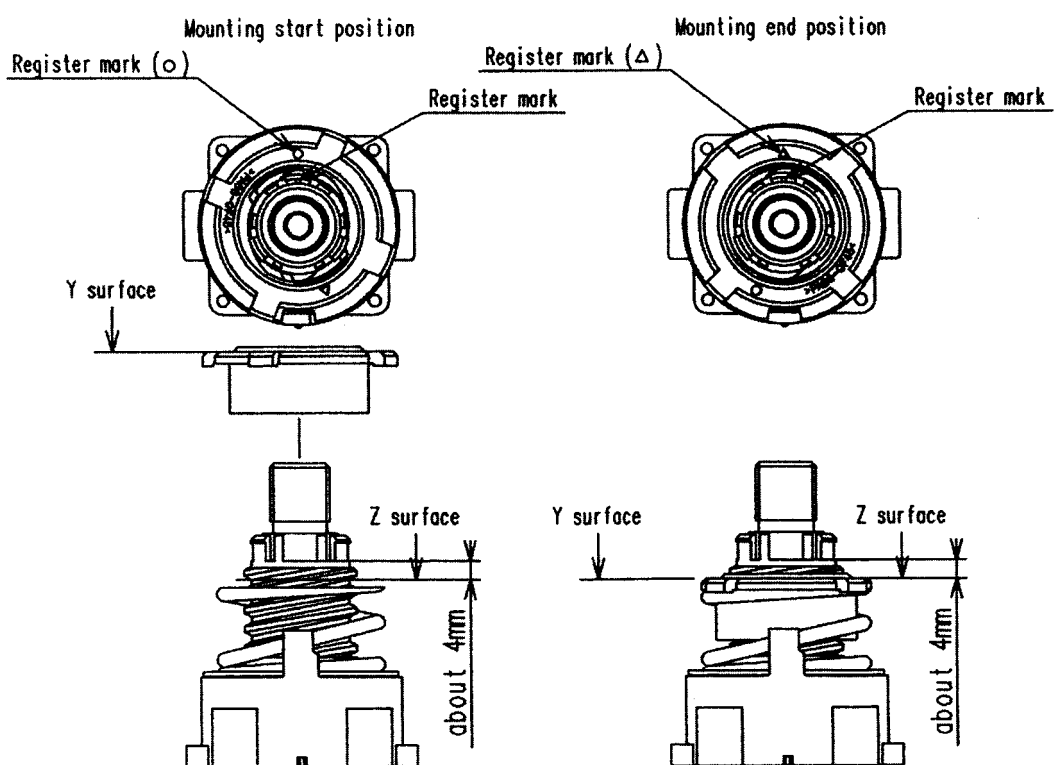


Fig. 10

(c) With the ridge at the Click Spring [5] facing the front-side, insert Click Spring [5] into the recess of the Front Case [9]. (See Fig. 11.)

(d) Insert the Clutch Dial [4] to the Front Case [9]. (See Fig. 12.)

Mount the Nut [6] into the Clutch Dial [4] engaging the wider projection of the Nut [6] with the wider recess of the Clutch Dial [4]. (The wider recess of the Clutch Dial [4] is positioned at "5" when viewed from the outside.) Make sure that the hook of Front Case [9] is fitted into the hole in the Clutch Dial [4].

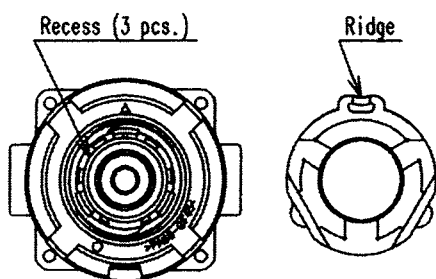


Fig. 11

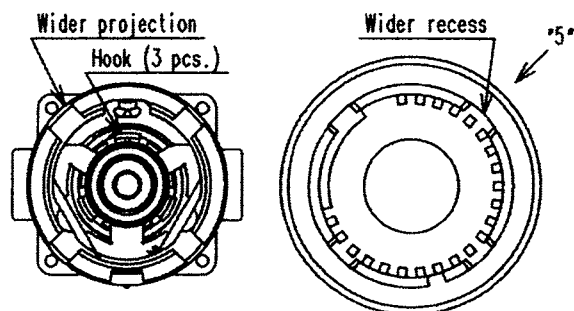


Fig. 12

(3) Reassembly of the gear unit

(a) Apply grease (Hitachi Motor Grease No. 29, Code No. 930035) to the meshing parts of the gear.

(b) Install the parts series from the six Steel Balls D5 [10] to Washer (B) [23] into the assembly reassembled in step (2). (See Fig. 13.)

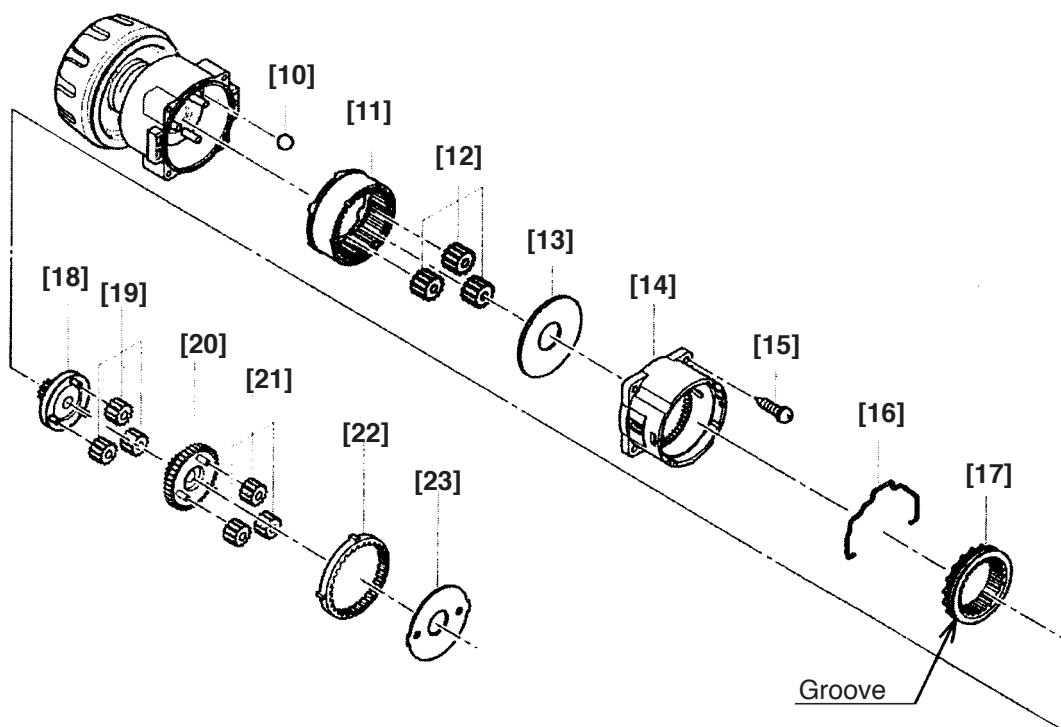


Fig. 13

- (i) Note the direction of the groove when installing the Slide Ring Gear [17] so that the groove faces toward the Motor [25].
- (ii) Install the Front Case [9] and the Rear Case [14] together with the mark on the Front Case [9] aligned with the mark on the Rear Case [14]. (See Fig. 15.)
- (iii) Install Washer (B) [23] in the Rear Case [14] with the projections of Washer (B) [23] engaged with the recesses in the Rear Case [14], and turn Washer (B) [23] clockwise until it can turn no further. (See Fig. 14.)

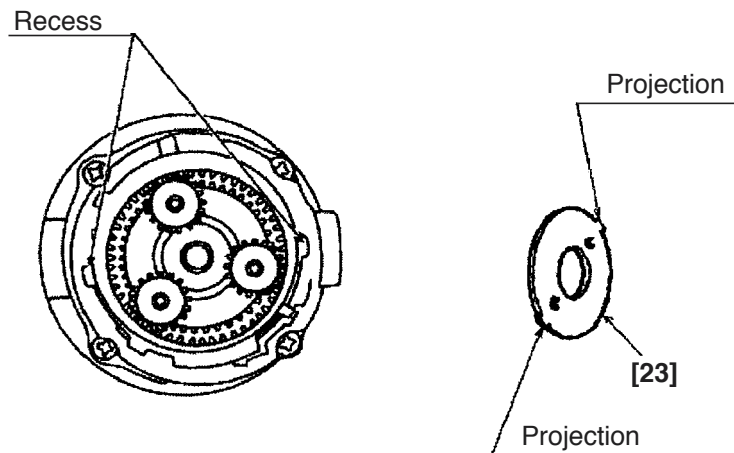


Fig. 14

- (c) Install the Shift Arm [16] into the assembly reassembled in step (b).

With the ridge at the Shift Arm [16] facing the Motor [25] side, first install them on the unmarked side of the assembly reassembled in step (b). Then insert the projections on the Shift Arm [16] into the holes in the Rear Case [14] and make sure that the projections are fitted into the grooves in the Slide Ring Gear [17] mounted within the Rear Case [14]. (See Fig. 15.)

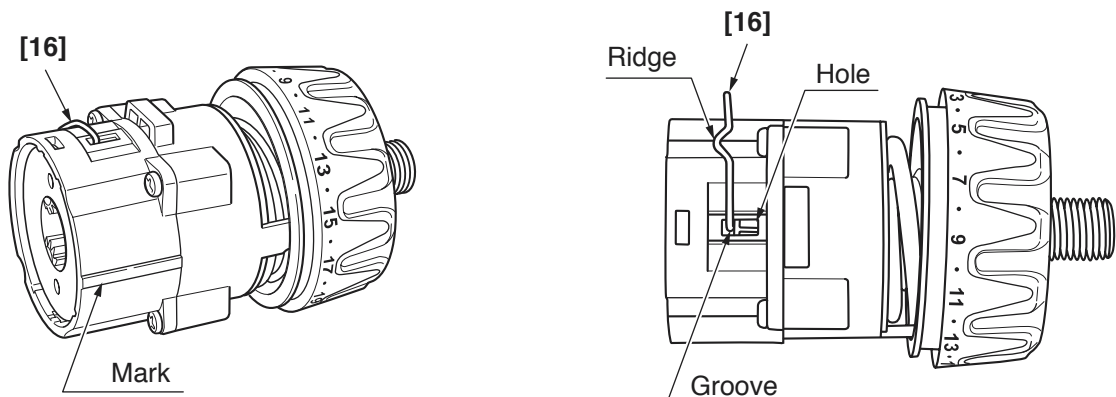


Fig. 15

- (d) Install the Drill Chuck 10TLRK-N (W/O Chuck Wrench) [2].

Install the Drill Chuck 10TLRK-N (W/O Chuck Wrench) [2] using the special repair tool (J-292, Code No. 316-379) and secure it with the Special Screw (Left Hand) M5 x 27 [1].

- (e) Install the Shift Knob [36] into the assembly reassembled in step (d).

When installing the Shift Knob [36] into the Shift Arm [16], note that the "LOW" mark on the Shift Knob [36] faces the Motor [25] with the Shift Arm [16] engaged with the recess in the Shift Knob [36].

(f) Install the assembly reassembled in step (1) and the assembly reassembled in step (e) together. (See Fig. 16.)

Fit the projection on the Motor Spacer [24] into the recess in the Rear Case [14] while ensuring that the Shift Knob [36] is aligned with the positive side of the Motor [25] and turn the Motor Spacer [24] clockwise when viewed from the rear of the Motor [25] until it can turn no further. During installation, make sure that the pinion press-fitted onto the shaft of the Motor [25] and Planet Gear (A) Set [21] mesh properly.

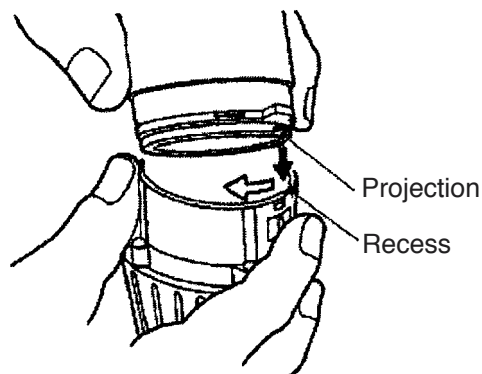


Fig. 16

(4) Installation of the assembly reassembled in step (3) into Housing (A). (B) Set [30]

(a) Install the assembly reassembled in step (3) into housing (A). Note that the projections on the Front Case [9] and the Motor Spacer [24] are engaged in the recesses in housing (A), and the projection on housing (A) is engaged in the groove of the Clutch Dial [4]. (See Fig. 17.)

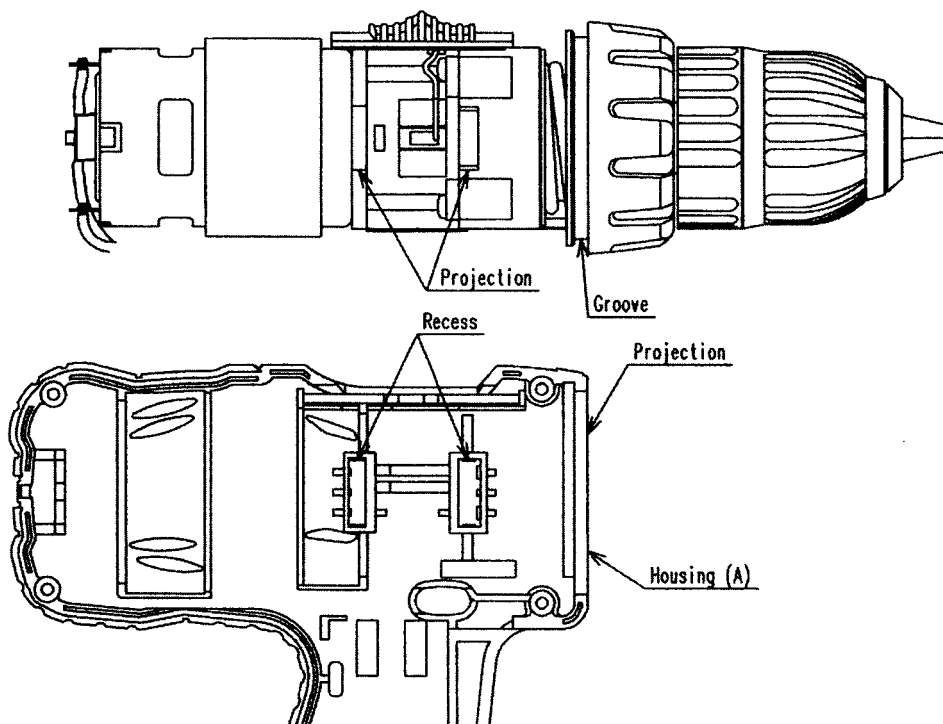


Fig. 17

(b) Mount the Pushing Button [34] to housing (A). Check that the protrusion of the forward/reverse changeover lever of the DC-Speed Control Switch [33] is inserted into the groove of the Pushing Button [34].

(c) Mount the Strap [41] to Housing (A) [30].

(d) Set the assembly reassembled in step (C) to housing (B) and secure it with the eight Tapping Screws (W/ Flange) D3 x 16 (Black) [26].

(e) Verify proper operation of the Clutch Dial [4] and the Shift Knob [36].

When the reassembly procedure up to step (d) is completed, ensure that the number "1" through the drill mark "▲" on the Clutch Dial [4] are in alignment with the triangle mark on Housing (A). (B) Set [30] respectively and the Clutch Dial [4] turns moderately. If the number "1" or the drill mark "▲" on the Clutch Dial [4] cannot reach the triangle mark on Housing (A). (B) Set [30], correctly reinstall the Clutch Dial [4] referring to step (2) as it is improperly mounted. Verify proper operation of the Shift Knob [36]. Check that the speed changes between high and low properly by shifting the Shift Knob [36]. If the speed cannot change properly or moderately, correctly reinstall the Shift Knob [36] referring to step (3) as it is improperly mounted.

(5) Reassembly of the Hook Ass'y [39]

Check that the V-Lock Nut M5 [40] is mounted to the Hook Ass'y [39]. Mount the Hook Spring [43] and secure it with the Special Screw M5 [44]. Make sure to mount the Hook Spring [43] with its larger diameter side pointing inward the housing.

(6) Other precautions in reassembling

After completion of reassembly, check that the rotating direction of the Drill Chuck 10TLRK-N (W/O Chuck Wrench) [2] matches the position of the Pushing Button [34]. When the Pushing Button [34] is pressed from the (R) side, the rotating direction of the Drill Chuck 10TLRK-N (W/O Chuck Wrench) [2] should be clockwise as viewed from behind. Switch on and off the Models DS 12DVF3 and DS 9DVF3 using the battery. Check that the runout of the Drill Chuck 10TLRK-N (W/O Chuck Wrench) [2] is 0.8 mm or less at the position 85 mm away from the tip of the chuck using a 9-mm dia. test bar.

(7) Screw tightening torque

Special Screw (Left Hand) M5 x 27 [1]	: 2.9 — 3.9 N·m (30 — 40 kgf·cm)
Drill Chuck 10TLRK-N (W/O Chuck Wrench) [2]	: 12.7 — 16.7 N·m (130 — 170 kgf·cm)
Screw Set D3 x 12 [15]	: 0.6 — 1.0 N·m (6 — 10 kgf·cm)
Machine Screw M3 x 8 [28]	: 1.1 — 1.9 N·m (11 — 19 kgf·cm)
Tapping Screw (W/Flange) D3 x 16 [26]	: 1.1 — 1.9 N·m (11 — 19 kgf·cm)
Special Screw M5 [44]	: 1.5 — 2.5 N·m (15 — 25 kgf·cm)

10-2. Precautions in Disassembly and Reassembly of Battery Charger

Please refer to the Technical Data and Service Manual for precautions in disassembly and reassembly of the Battery Charger UC 18YG.

11. STANDARD REPAIR TIME (UNIT) SCHEDULES

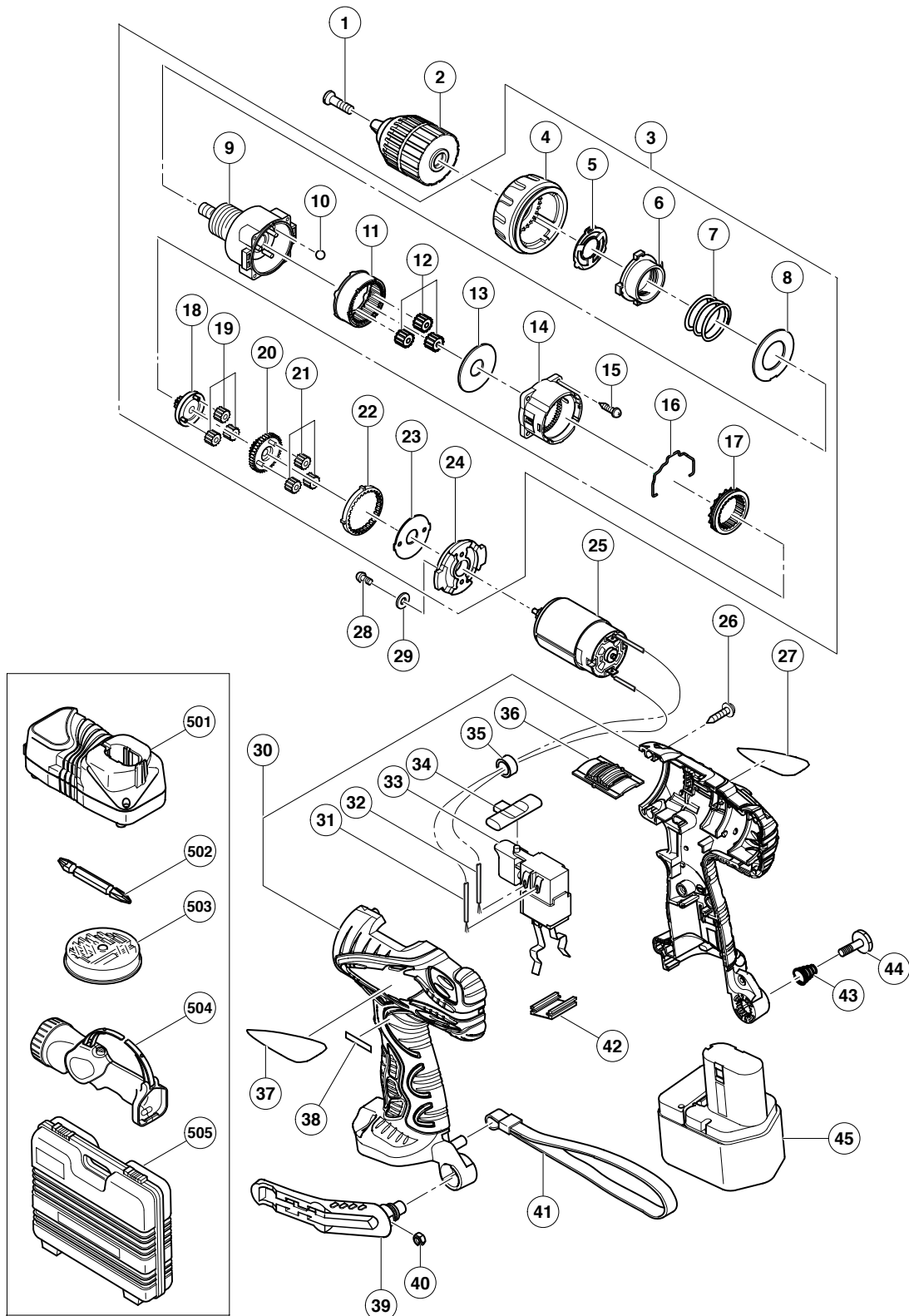
MODEL	Variable		10	20	30	40	50	60
	Fixed							
DS 9DVF3 DS 12DVF3		Work Flow						
	General Assembly			Housing (A).(B) Set Motor DC-Speed Control Switch Shift Knob				
				Gear Box Ass'y				
		Drill Chuck (Keyless)		Clutch Dial Click Spring Nut				
				Spring				
		Hook Ass'y		Front Case Ring Gear Planet Gear (C) Set Rear Case Shift Arm Slide Ring Gear Pinion (C) Planet Gear (B) Set Pinion (B) Planet Gear (A) Set First Ring Gear				

ELECTRIC TOOL PARTS LIST

■ CORDLESS DRIVER DRILL Model DS 12DVF3

2005 · 3 · 30

(E1)



PARTS

DS 12DVF3

ITEM NO.	CODE NO.	DESCRIPTION	NO. USED	REMARKS	
1	318-228	SPECIAL SCREW (LEFT HAND) M5X27	1		
2	323-250	DRILL CHUCK 10TLRK-N (W/O CHUCK WRENCH)	1		
3	324-106	GEAR BOX ASS'Y	1	INCLUD. 4-24	
4	324-114	CLUTCH DIAL	1		
5	324-108	CLICK SPRING	1		
6	324-109	NUT	1		
7	324-110	SPRING	1		
8	324-347	WASHER (D)	1		
9	324-107	FRONT CASE	1		
10	306-936	STEEL BALL D5	6		
11	324-111	RING GEAR	1		
12	324-348	PLANET GEAR (C) SET (3 PCS.)	3		
13	324-349	WASHER (A)	1		
14	324-350	REAR CASE	1		
15	324-357	SCREW SET D3X12 (4 PCS.)	4		
16	324-115	SHIFT ARM	1		
17	324-351	SLIDE RING GEAR	1		
18	324-112	PINION (C)	1		
19	324-352	PLANET GEAR (B) SET (3 PCS.)	3		
20	324-113	PINION (B)	1		
21	324-354	PLANET GEAR (A) SET (3 PCS.)	3		
22	324-353	FIRST RING GEAR	1		
23	324-355	WASHER (B)	1		
24	324-356	MOTOR SPACER	1		
25	318-244	MOTOR	1		
26	313-687	TAPPING SCREW (W/FLANGE) D3X16 (BLACK)	8		
27		NAME PLATE	1		
28	949-203	MACHINE SCREW M3X8 (10 PCS.)	2		
29	949-451	SPRING WASHER M3 (10 PCS.)	2		
30	324-363	HOUSING (A). (B) SET	1		
31	324-121	INTERNAL WIRE (B) 90L (BLACK)	1		
32	324-120	INTERNAL WIRE (B) 140L (RED)	1		
33	324-119	DC-SPEED CONTROL SWITCH	1		
34	324-117	PUSHING BUTTON	1		
* 35	323-229	FERRITE CORE	1	FOR EUROPE	
36	324-116	SHIFT KNOB	1		
37		HITACHI LABEL	1		
* 38		LABEL (CHINA)	2	FOR TPE	
39	320-287	HOOK ASS'Y	1	INCLUD. 40	
40	320-288	V-LOCK NUT M5	1		
41	306-952	STRAP (BLACK)	1		
42	315-141	TERMINAL SUPPORT (A)	1		
43	319-926	HOOK SPRING	1		
44	319-927	SPECIAL SCREW M5	1		
* 45	320-387	BATTERY EB 1220BL (W/ENGLISH N.P.)	2		
* 45	322-629	BATTERY EB 1214S (W/ENGLISH N.P.)	2		
* 45	324-360	BATTERY EB 1214S (W/ENGLISH N.P.)	2	FOR USA, CAN	
* 45	324-361	BATTERY EB 1214S (W/ENGLISH N.P.)	2	FOR TPE	
* 45	324-362	BATTERY EB 1214S (W/ENGLISH N.P.)	2	FOR KOR	

STANDARD ACCESSORIES

DS 12DVF3

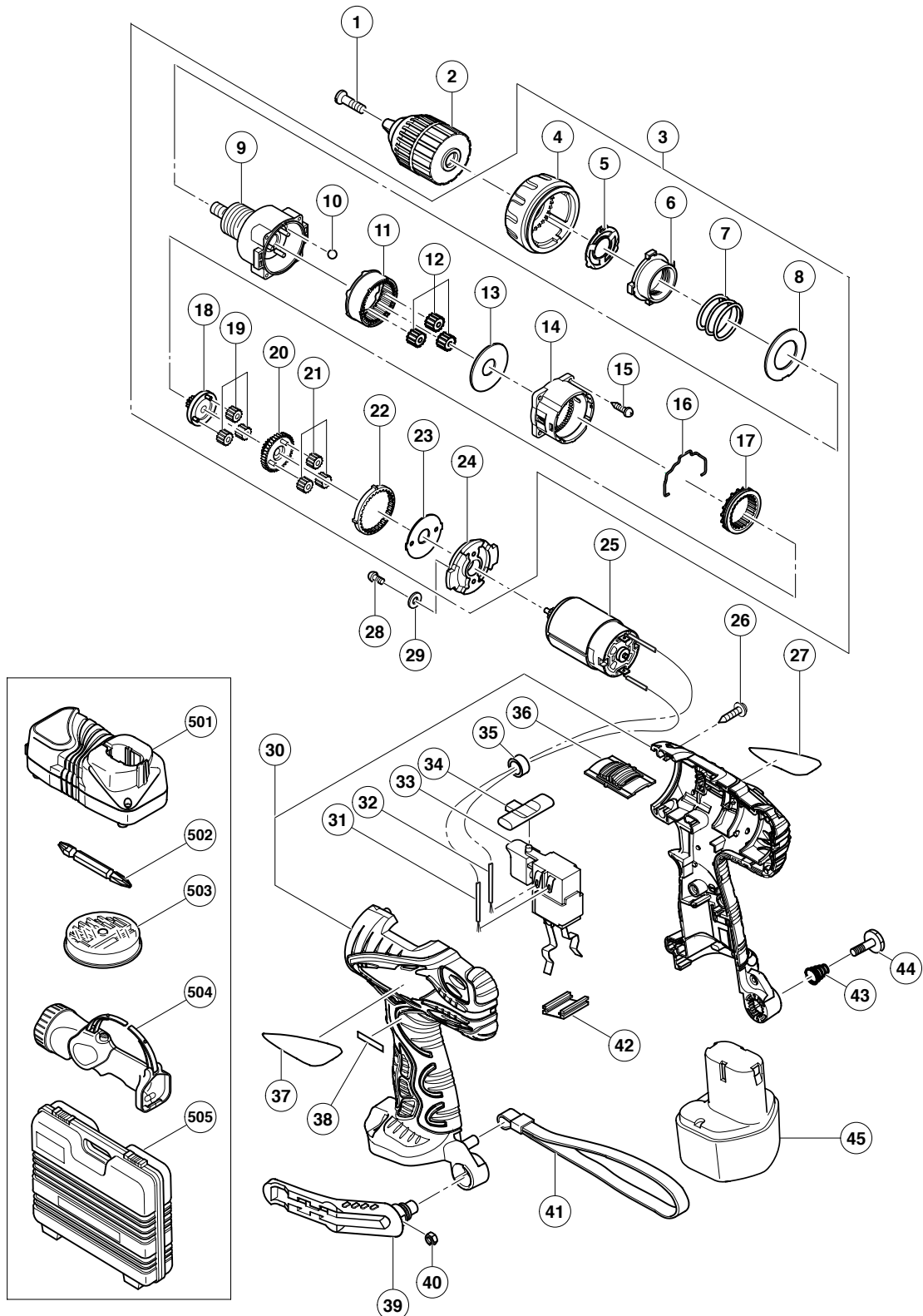
[illegible]

ELECTRIC TOOL PARTS LIST

■ CORDLESS DRIVER DRILL Model DS 9DVF3

2005 · 3 · 30

(E1)



PARTS

DS 9DVF3

ITEM NO.	CODE NO.	DESCRIPTION	NO. USED	REMARKS	
1	318-228	SPECIAL SCREW (LEFT HAND) M5X27	1		
2	323-250	DRILL CHUCK 10TLRK-N (W/O CHUCK WRENCH)	1		
3	324-106	GEAR BOX ASS'Y	1	INCLUD. 4-24	
4	324-114	CLUTCH DIAL	1		
5	324-108	CLICK SPRING	1		
6	324-109	NUT	1		
7	324-110	SPRING	1		
8	324-347	WASHER (D)	1		
9	324-107	FRONT CASE	1		
10	306-936	STEEL BALL D5	6		
11	324-111	RING GEAR	1		
12	324-348	PLANET GEAR (C) SET (3 PCS.)	3		
13	324-349	WASHER (A)	1		
14	324-350	REAR CASE	1		
15	324-357	SCREW SET D3X12 (4 PCS.)	4		
16	324-115	SHIFT ARM	1		
17	324-351	SLIDE RING GEAR	1		
18	324-112	PINION (C)	1		
19	324-352	PLANET GEAR (B) SET (3 PCS.)	3		
20	324-113	PINION (B)	1		
21	324-354	PLANET GEAR (A) SET (3 PCS.)	3		
22	324-353	FIRST RING GEAR	1		
23	324-355	WASHER (B)	1		
24	324-356	MOTOR SPACER	1		
25	318-244	MOTOR	1		
26	313-687	TAPPING SCREW (W/FLANGE) D3X16 (BLACK)	8		
27		NAME PLATE	1		
28	949-203	MACHINE SCREW M3X8 (10 PCS.)	2		
29	949-451	SPRING WASHER M3 (10 PCS.)	2		
30	324-363	HOUSING (A). (B) SET	1		
31	324-121	INTERNAL WIRE (B) 90L (BLACK)	1		
32	324-120	INTERNAL WIRE (B) 140L (RED)	1		
33	324-119	DC-SPEED CONTROL SWITCH	1		
34	324-117	PUSHING BUTTON	1		
* 35	323-229	FERRITE CORE	1	EXCEPT FOR SAF, TPE, KOR	
36	324-116	SHIFT KNOB	1		
37		HITACHI LABEL	1		
38		LABEL (CHINA)	1	FOR TPE	
39	320-287	HOOK ASS'Y	1	INCLUD. 40	
40	320-288	V-LOCK NUT M5	1		
41	306-952	STRAP (BLACK)	1		
42	315-141	TERMINAL SUPPORT (A)	1		
43	319-926	HOOK SPRING	1		
44	319-927	SPECIAL SCREW M5	1		
* 45	324-079	BATTERY EB 914S (W/ENGLISH N.P.)	2		
* 45	324-078	BATTERY EB 914S (W/ENGLISH N.P.)	2	FOR SAF, KOR	
* 45	324-080	BATTERY EB 914S (W/ENGLISH N.P.)	2	FOR TPE	

STANDARD ACCESSORIES

DS 9DVF3[illegible]

