

## MODELS

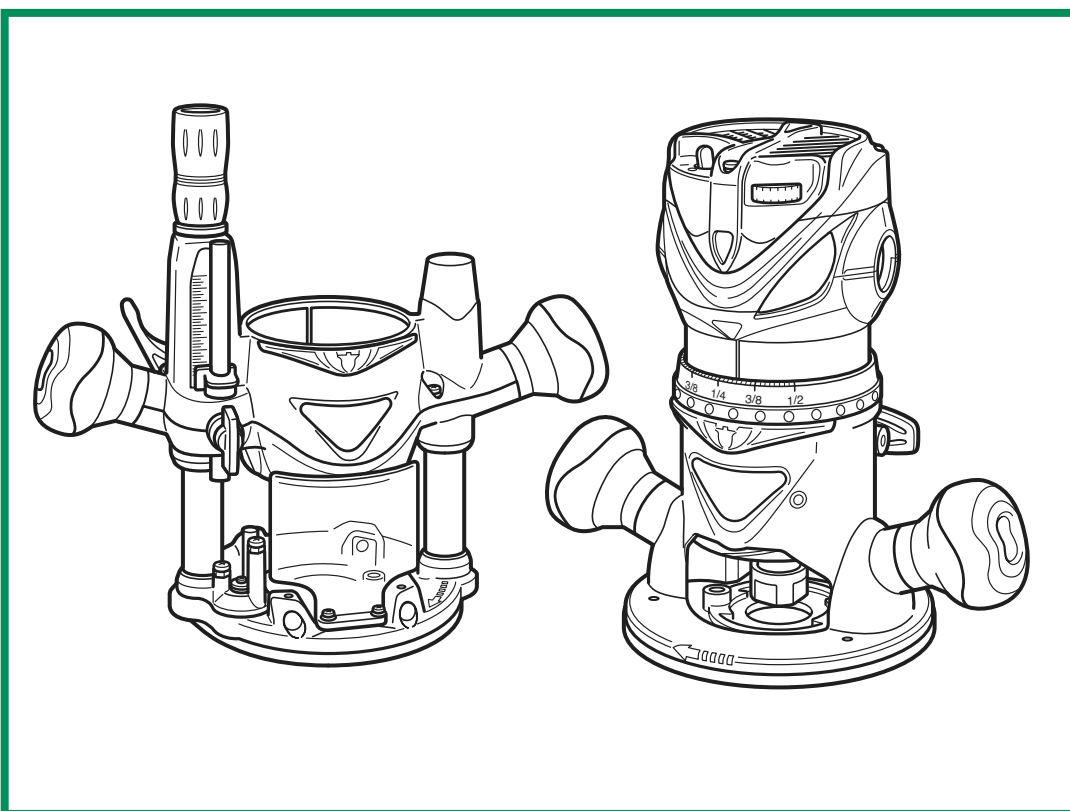
**M 12VC, KM 12VC**

**M 12SC, KM 12SC**

# Hitachi Power Tools

**ROUTER**  
**M 12VC, KM 12VC**  
**M 12SC, KM 12SC**

**TECHNICAL DATA  
AND  
SERVICE MANUAL**



LIST Nos. M 12VC: 0665 KM 12VC: 0666 Aug. 2004  
M 12SC: 0667 KM 12SC: 0668

REMARK:

Throughout this TECHNICAL DATA AND SERVICE MANUAL, a symbol(s) is(are) used in the place of company name(s) and model name(s) of our competitor(s). The symbol(s) utilized here is(are) as follows:

Symbol Utilized	Competitor	
	Company Name	Model Name
P	PORTER CABLE	690LRVS, 693VSPK 690LR, 693LRPK
C	MAKITA	RF1101, RF1101KIT RF1100



## CONTENTS

	Page
<b>1. PRODUCT NAME .....</b>	<b>1</b>
<b>2. MARKETING OBJECTIVE .....</b>	<b>1</b>
<b>3. APPLICATIONS .....</b>	<b>1</b>
<b>4. SELLING POINTS .....</b>	<b>1</b>
4-1. Selling Point Descriptions .....	2
<b>5. SPECIFICATIONS .....</b>	<b>4</b>
<b>6. COMPARISONS WITH SIMILAR PRODUCTS .....</b>	<b>5</b>
<b>7. PRECAUTIONS IN SALES PROMOTION .....</b>	<b>6</b>
7-1. Handling Instructions .....	6
7-2. Name Plate .....	6
<b>8. REFERENCE MATTERS .....</b>	<b>6</b>
8-1. Collet Chuck .....	6
<b>9. PRECAUTIONS IN DISASSEMBLY AND REASSEMBLY .....</b>	<b>7</b>
9-1. Disassembly .....	7
9-2. Reassembly .....	12
9-3. Insulation Tests .....	13
9-4. Cleaning the Cover .....	13
9-5. No-load Current Value .....	14
<b>10. STANDARD REPAIR TIME (UNIT) SCHEDULES .....</b>	<b>15</b>
For Models M 12VC and M 12SC .....	15
For Models KM 12VC and KM 12SC .....	16
Assembly Diagram for M 12VC	
Assembly Diagram for KM 12VC	
Assembly Diagram for M 12SC	
Assembly Diagram for KM 12SC	

## 1. PRODUCT NAME

Hitachi Router, Models M 12VC ..... Variable speed type with fixed base

KM 12VC ..... Variable speed type with fixed and plunge base

M 12SC ..... Single speed type with fixed base

KM 12SC ..... Single speed type with fixed and plunge base

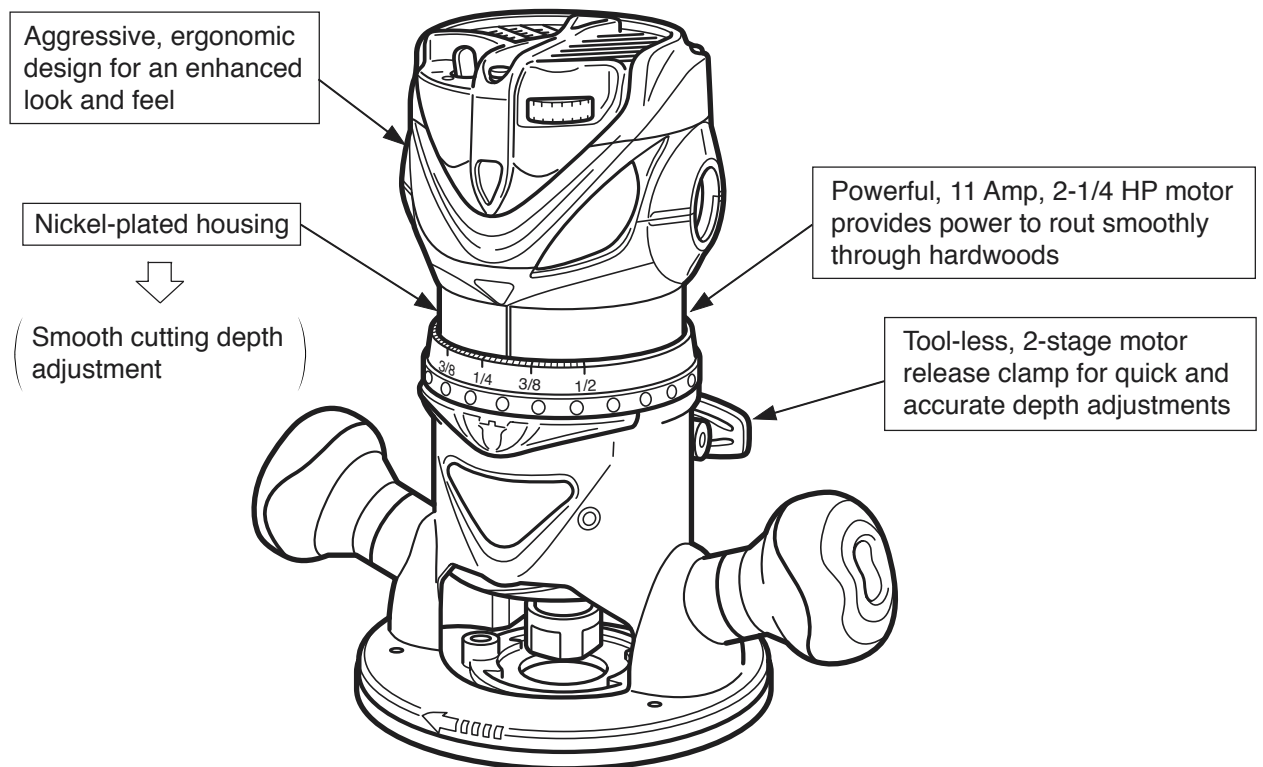
## 2. MARKETING OBJECTIVE

The fixed-base routers have been used for the longest time in the U.S.A. and they are still popular. Recently, some manufacturers have brought out their fixed-base routers as a kit including the plunge base targeting on sales in home centers, and these routers have been well reputed. To cope with this situation and also to respond to the demand from Lowe's, we have developed the fixed-base routers Models M 12VC, KM 12VC, M 12SC and KM12SC under the concept for more powerful, quiet and ergonomically styled models to plainly differentiate them from the competitors. With the new fixed-base routers Models M 12VC, KM 12VC, M 12SC and KM12SC, we aim to expand our market share in the North American market.

## 3. APPLICATIONS

Groove cutting, chamfering, window cutting, trimming, shaping and pattern cutting

## 4. SELLING POINTS



**M 12VC**

#### 4-1. Selling Point Descriptions

##### (1) Tool-less 2-stage motor release clamp for quick and accurate depth adjustments

The Models M 12VC, M 12SC, KM 12VC and KM 12SC are provided with the lever that has the 2-stage locking mechanism to secure the housing temporarily.

For the conventional routers, there was a fear that the housing might slide down by its own weight when adjusting the cutting depth while the lever was in the released position (Fig. 1) or the cutting depth might be changed when shifting the lever from the released position to the secured position (Fig. 3). Because the new lever of the Models M 12VC, M 12SC, KM 12VC and KM 12SC can lightly secure the housing at the temporarily secured position (Fig. 2), the housing does not slide down by its own weight and the cutting depth is not changed when shifting the lever to the secured position. In addition, the cutting depth is finely adjustable thanks to the temporary securing function. How to use the 2-stage lock lever is exemplified below.

##### ① Released position (Fig. 1)

Shift the lever to the fully opened position in order to move the housing widely for rough cutting depth adjustment, bit replacement or changing to the plunge base.

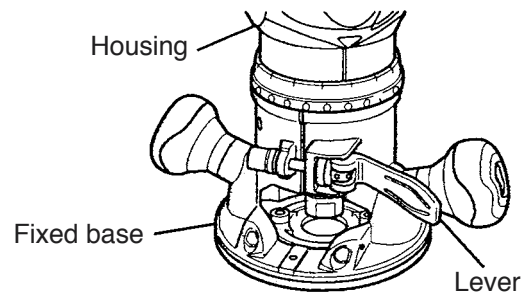


Fig. 1

##### ② Temporarily secured position (Fig. 2)

Shift the lever until you feel a click at the center position between the secured position and the released position. The cutting depth is finely adjustable at this position as the housing does not slide down by its own weight.

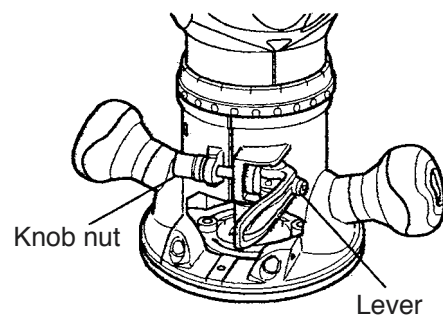


Fig. 2

##### ③ Fixed position (Fig. 3)

Shift the lever to the secured position after fine adjustment of the cutting depth at the temporarily secured position.

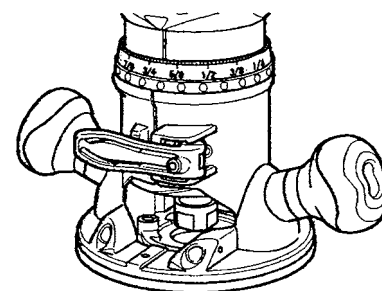


Fig. 3

#### Note:

The motor housing can be temporarily secured by clamping the lever (the motor housing does not slide down by its own weight). If the motor housing slides down, make adjustments by tightening the knob nut. Turning the knob nut clockwise tightens the lever, while turning the knob nut counterclockwise loosens the lever.

(2) Powerful, 11 Amp, 2-1/4 HP motor provides power to rout smoothly through hardwoods

A motor that is most powerful and fastest in the class was developed for the Models M 12VC, M 12SC, KM 12VC and KM 12SC. The fan is made of aluminum and it has a ring-shaped junction at the outer circumference as shown in Fig. 4. Thanks to the unique structure, the moment of inertia of the armature that is an element for increasing the cutting efficiency is increased and the class-top cutting speed is obtained.

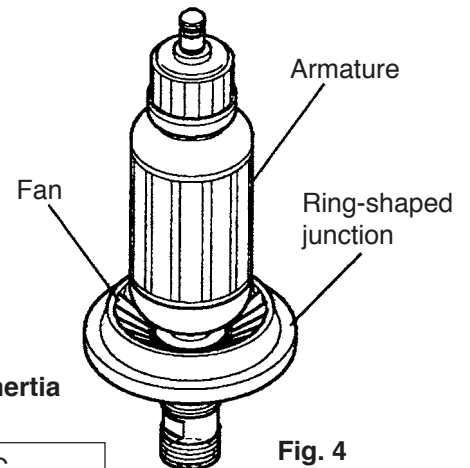
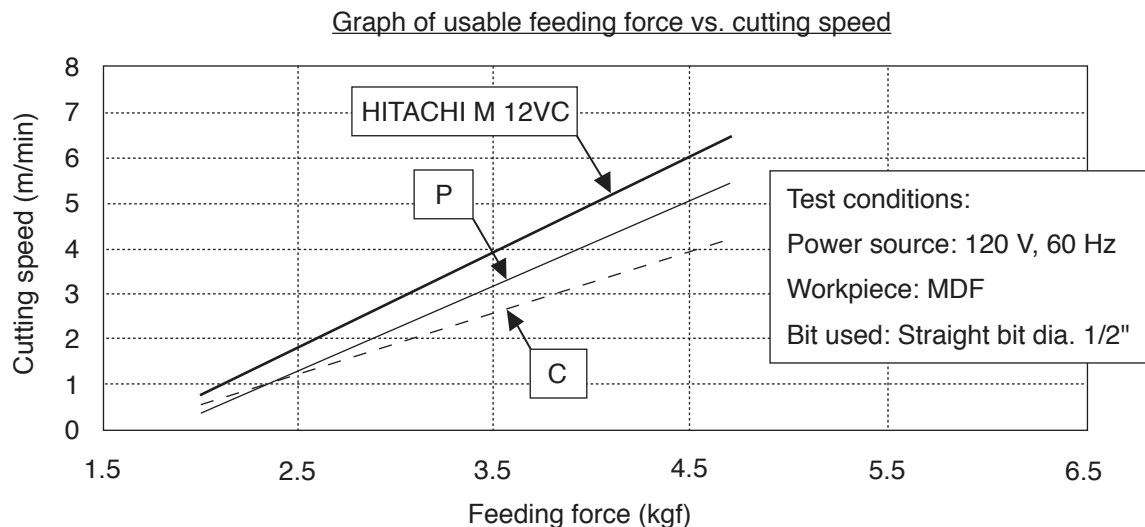


Fig. 4

**Table 1 Comparison between the motor size and the moment of inertia of the armature**

	M 12VC/SC	P	C
Motor size (mm)	72 mm dia. x 50	81 mm dia. x 45	72 mm dia. x 50
Moment of inertia of the armature $\times 10^{-4}$ (kg·m <sup>2</sup> )	1.46	1.30	1.05



(3) Extremely low noise level - only 80 dB

The noise level of the Models M 12VC, M 12SC, KM 12VC and KM 12SC is 80 dB or less. It is the lowest noise level in the class.

Maker	HITACHI	P	C
Model	M 12VC (M 12SC, KM 12VC/SC)		
Noise level (dB)	79.5	87.3	82.0

(4) Nickel-plated housing

The Models M 12VC, M 12SC, KM 12VC and KM 12SC have a nickel-plated housing. Thanks to this housing, the cutting depth can be smoothly adjusted. In addition, the housing is scratch-proof and easy to remove stains.

## 5. SPECIFICATIONS

Model		M 12VC, M 12SC, KM 12VC, KM 12SC
Collect chuck capacity		1/2" and 1/4"
Type of power source		Single-phase AC 60 Hz
Voltage and input		120 V, 11 A
Type of motor		Single-phase AC commutator motor
Insulation method		Single insulation
Enclosure		Head cover (B) ..... Nylon resin Housing, stator holder, head cover (A) ..... Diecast aluminum alloy (silver metal plating)
Main body stroke		66 mm (2.6") (Plunge base type)
Speed	No-load	8,000 to 24,000/min. (M 12VC, KM 12VC) 24,000/min. (M 12SC, KM 12SC)
	Full-load	8,000 to 23,000/min. (M 12VC, KM 12VC) 23,000/min. (M 12SC, KM 12SC)
Weight		7.3 lbs. (3.3 kg) with fixed base 9.9 lbs. (4.5 kg) with plunge base
Standard accessories		M 12VC/SC 1/2" collet chuck ..... 1 1/4" collet chuck ..... 1 23 mm wrench ..... 1 16 mm wrench ..... 1 Template guide adapter ..... 1 Template guide centering adjuster ..... 1  KM 12VC/SC 1/2" collet chuck ..... 1 1/4" collet chuck ..... 1 23 mm wrench ..... 1 16 mm wrench ..... 1 10 mm wrench ..... 1 Template guide adapter ..... 1 Template guide centering adjuster ..... 1 Template guide (porter cable type) ..... 7 Chip shield ..... 1 Diameter of large sub base ..... 1 Case ..... 1

## 6. COMPARISONS WITH SIMILAR PRODUCTS

( ): Single speed type

Maker		HITACHI	P	C
Model name		M 12VC, KM 12VC (M 12SC, KM 12SC)		
Power input	(A)	11 (11)	11 (11)	11 (11)
Horse power	(HP)	2-1/4 (2-1/4)	1-3/4 (1-3/4)	2-1/4 (2-1/4)
No-load speed	(/min.)	8,000 to 24,000 (24,000)	10,000 to 27,500 (27,500)	8,000 to 24,000 (24,000)
Insulation method		Single insulation	Single insulation	Single insulation
No-load noise level	(dB)	79.5	87.3	82.0
Collect chuck capacity		1/2" & 1/4"	1/2" & 1/4"	1/2" & 1/4"
Fixed base	Cutting depth adjustment system		Rotate the motor pack	Rotate the motor pack
	To clamp motor		Fasten clamp lever (2-stage)	Fasten clamp lever
	Straight (edge) guide attachment position		Front	Front
	Weight (Actually measured value)	(lbs.)	7.3 (7.3)	— (7.3)
Plunge base	Fine depth adjustment		Provided	Provided
	Plunge lock lever		Returns automatically to locked position	Returns automatically to locked position
	Straight (edge) guide attachment position		Front and back	Back
	Weight (Actually measured value)	(lbs.)	— (9.9)	— (10.1)
Template guide centering adjuster		Provided	Not provided	Not provided
Template guide		Provided (7 pcs.)	Not provided	Not provided



## 7. PRECAUTIONS IN SALES PROMOTION

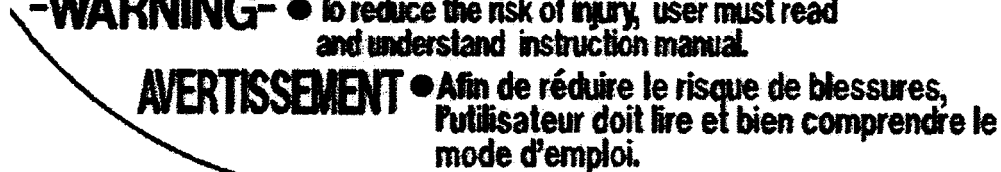
In the interest of promoting the safest and most efficient use of the Models M 12VC/SC and KM 12VC/SC Routers by all of our customers, it is very important that at the time of sale the salesperson carefully ensures that the buyer seriously recognizes the importance of the contents of the Handling Instructions, and fully understands the meaning of the precautions listed on the Caution Plate attached to each tool.

### 7-1. Handling Instructions

Although every effort is made in each step of design, manufacture and inspection to provide protection against safety hazards, the dangers inherent in the use of any electric power tool cannot be completely eliminated. Accordingly, general precautions and suggestions for the use of electric power tools, and specific precautions and suggestions for the use of the Router is listed in the Handling Instructions to enhance the safe, efficient use of the tool by the customer. Salespersons must be thoroughly familiar with the contents of the Handling Instructions to be able to offer appropriate guidance to the customer during sales promotion.

### 7-2. Name Plate

Each tool is provided with a Name Plate which lists the following basic safety precautions in the use of the tool.



**-WARNING-** • To reduce the risk of injury, user must read and understand instruction manual.  
**AVERTISSEMENT** • Afin de réduire le risque de blessures, l'utilisateur doit lire et bien comprendre le mode d'emploi.

## 8. REFERENCE MATTERS

### 8-1. Collet Chuck

The collet chuck portion consists of a collet chuck and a collet nut. The collet chuck and nut are assembled as a single unit to maintain desired dimensional accuracy. Therefore, when replacing the collet chuck portion, be sure to replace it entirely.

## 9. PRECAUTIONS IN DISASSEMBLY AND REASSEMBLY

The **[Bold]** numbers in the descriptions below correspond to the item numbers in the Parts Lists and exploded assembly diagram for the Model M 12VC. The disassembly and reassembly procedures described are the same for the Models M 12VC, M 12SC, KM 12VC and KM 12SC.

**CAUTION:** Prior to commencing disassembly, inspection or other maintenance, ensure without fail that the plug is disconnected from the power source.

### 9-1. Disassembly

#### 9-1-1. Main body

(1) First, remove the bit. If further disassembly is attempted with the bit mounted on the router, it may cause damage to the cutting edges of the bit and/or serious injury to the handler.

(2) Removal of Head Cover (A) [4] and (B) [3] (Fig. 5)

Remove the Machine Screw (W/Washers) M4 x 8 (Black) [2] and three Machine Screws (W/Washers) M4 x 55 (Black) [1]. Then Head Cover (A) [4] and Head Cover (B) [3] can be removed from the Stator Holder Ass'y [22].

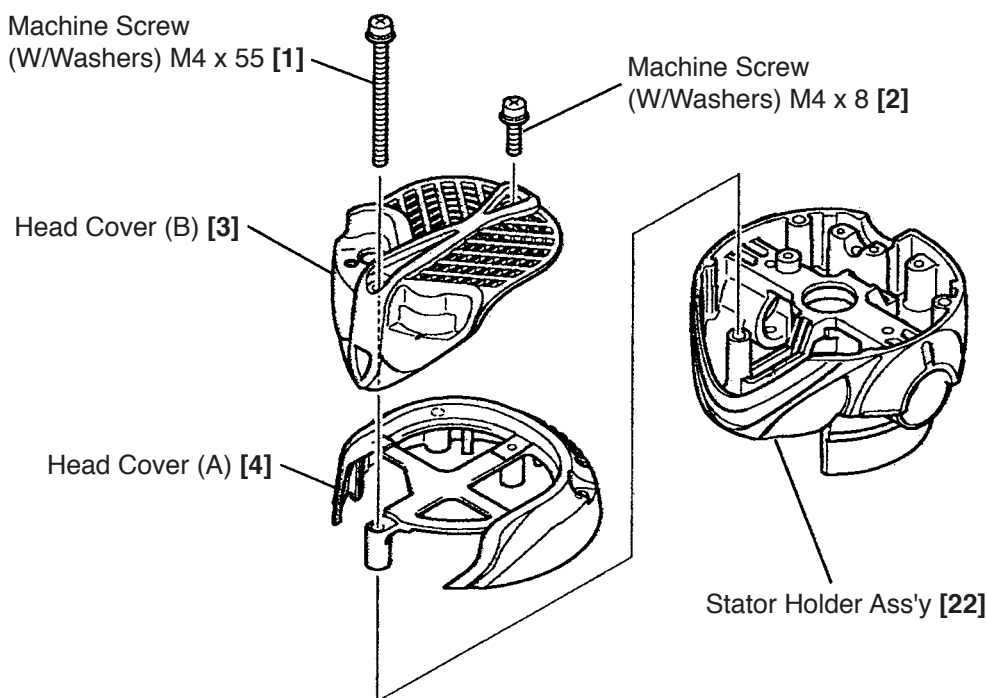


Fig. 5

(3) Separating the Housing [32] and the Stator Holder Ass'y [22] (Fig. 6)

Remove the two Brush Caps [18] and two Carbon Brushes (1 Pair) [19]. Tap the upper portion of the carbon brush chamber of the Stator Holder Ass'y [22] with a flat-blade screwdriver and a wooden hammer. (At this time, wrap the tip of the flat-blade screwdriver with a cloth to prevent the upper portion of the carbon brush chamber from being scratched. Be careful not to damage the Brush Holder [20].) Insert a flat-blade screwdriver into the gap between the Housing [32] and the Stator Holder Ass'y [22] when it is widened about 2 mm, and remove the Housing [32] from the Stator Holder Ass'y [22].

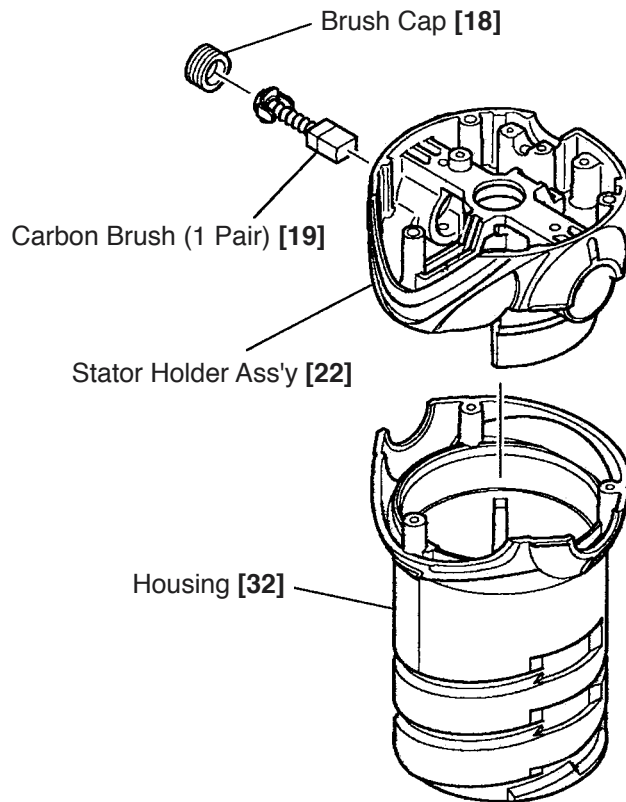


Fig. 6

(4) Disassembly of the Armature Ass'y 120 V [31] (Fig. 7)

First, remove the Collet Chuck 1/2" [36] (or [501]) with the Wrench 23 mm [506] and the Wrench 16 mm [505]. And remove the Thrust Nut [35] with wrenches. Then remove the Armature Ass'y 120 V [31] from the Housing [32]. To remove the Magnet [26] from the Armature Ass'y 120 V [31], being very careful not to damage the magnet component, fit a 14 mm wrench onto the hexagonal portion of the Magnet [26], and loosen and remove it from the Armature Ass'y 120 V [31].

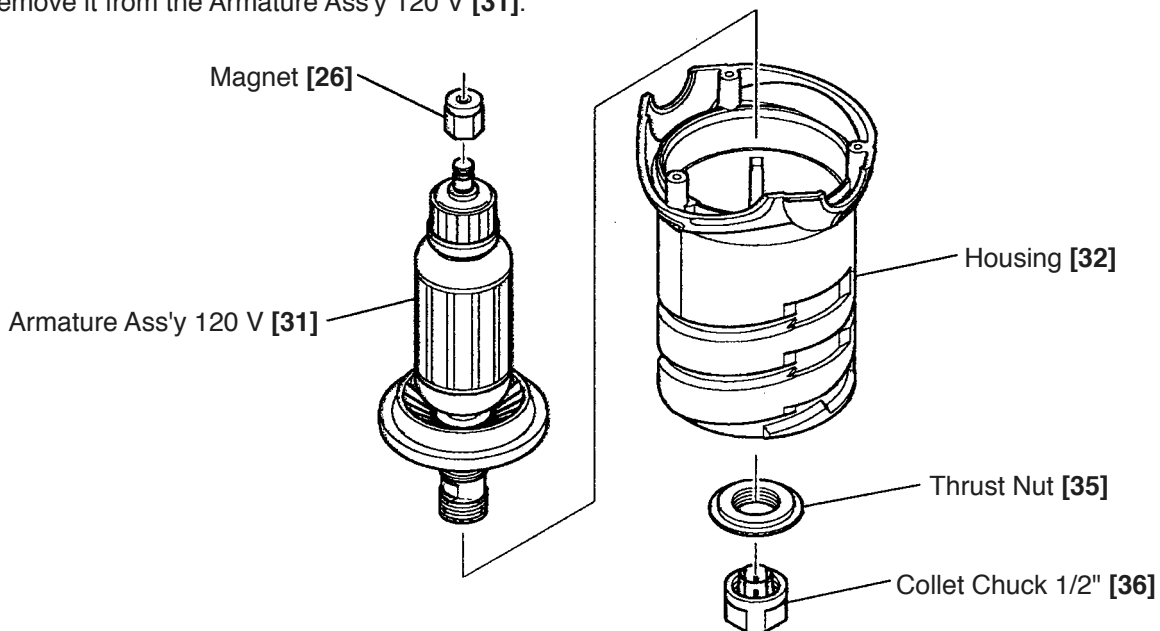


Fig. 7

(5) Disassembly of the Stator Ass'y 120 V [29] (Fig. 8)

First, remove the Controller Circuit [14] from the Stator Holder Ass'y [22]. Second, disconnect the Brush Terminals [28] of the Stator Ass'y 120 V [29] from the Brush Holders [20]. And remove two Machine Screws (W/Sp. Washer) M5 x 60 [30]. Then, with a wooden hammer, gently tap on the lower end of the Stator Holder Ass'y [22] to loosen and remove the Stator Ass'y 120 V [29] from the Stator Holder Ass'y [22].

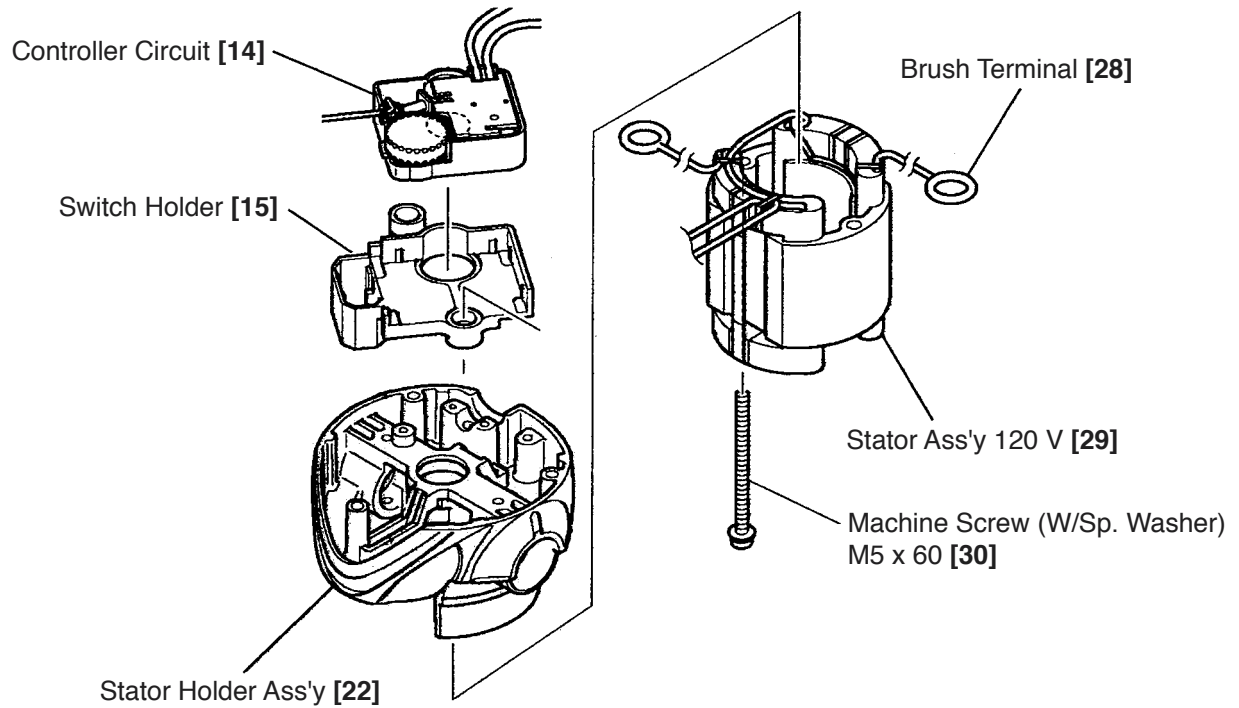


Fig. 8

**9-1-2. Fixed Base**

(1) Removal of the Ring [37] and the Stopper Pin [38] from Base (A) [39] (Fig. 9)

Insert a flat-blade screwdriver between Base (A) [39] and the Ring [37] and pry the Ring [37] off. Remove the Stopper Pin [38].

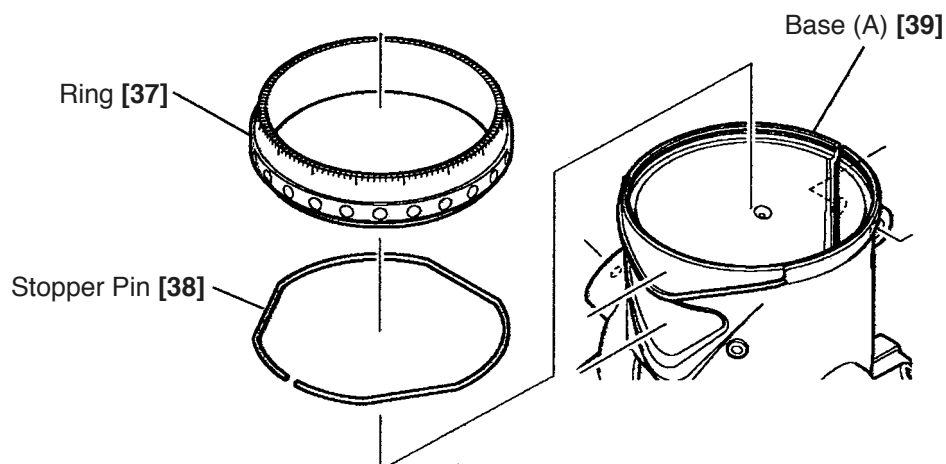


Fig. 9

(2) Disassembly of Lever (A) Ass'y [50] (Fig. 10)

Being very careful not to lose the Spring [56], loosen and remove the Knob Nut [57]. And remove Lever (A) Ass'y [50], Lever Sleeve [54] and Lever Holder [55]. When removing the Hex. Socket Set Screw M5 x 8 [53], be very careful not to lose Spring (C) [52] and Steel Ball D3.97 [51].

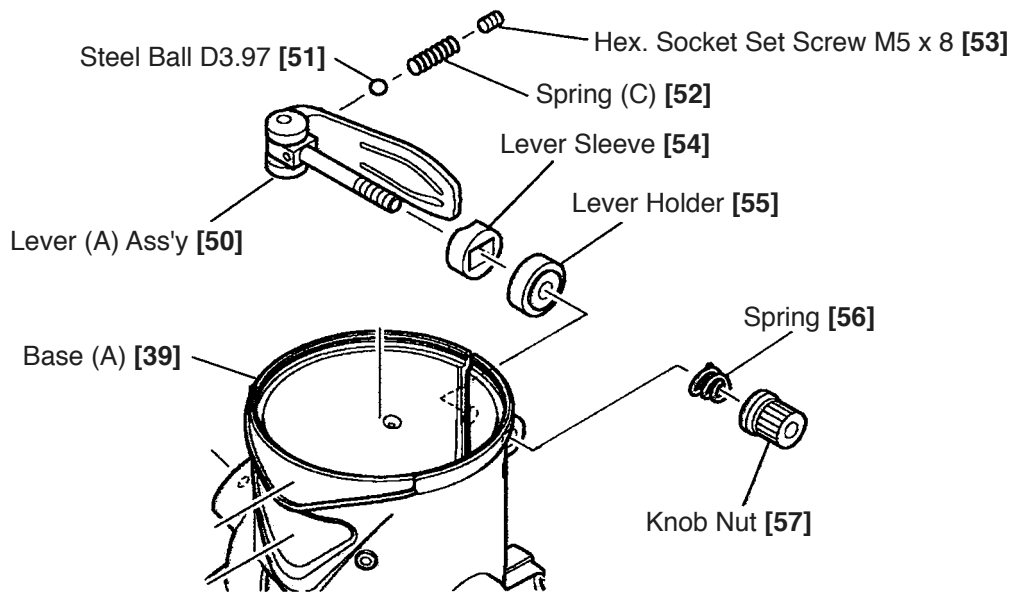
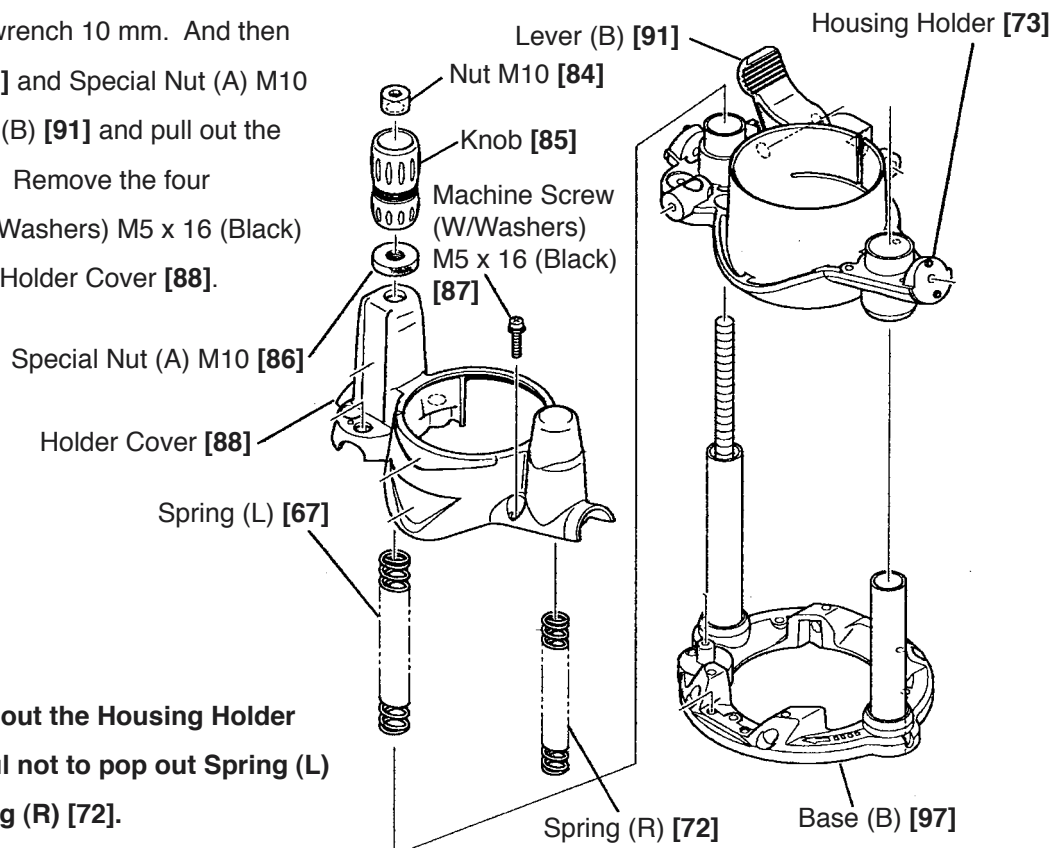


Fig. 10

9-1-3. Plunge Base for Models KM 12VC and KM 12SC

(1) Separating Base (B) [97] and the Housing Holder [73] (Fig. 11)

With fixing Lever (B) [91], remove the Nut M10 [84] with a hex. bar wrench 10 mm. And then remove the Knob [85] and Special Nut (A) M10 [86]. Release Lever (B) [91] and pull out the Housing Holder [73]. Remove the four Machine Screws (W/Washers) M5 x 16 (Black) [87] and remove the Holder Cover [88].



**Caution:** When pulling out the Housing Holder [73], be careful not to pop out Spring (L) [67] and Spring (R) [72].

Fig. 11

(2) Removal of Lever (B) [91] (Fig. 12)

Remove the Machine Screw (W/Washers) M4 x 12 (Black) [81] with a Phillips screwdriver being careful not to pop out Lever (B) [91] and the Lock Spring [89]. Then Lever (B) [91], Lock Screw [90] and Lock Spring [89] can be removed from the Housing Holder [73].

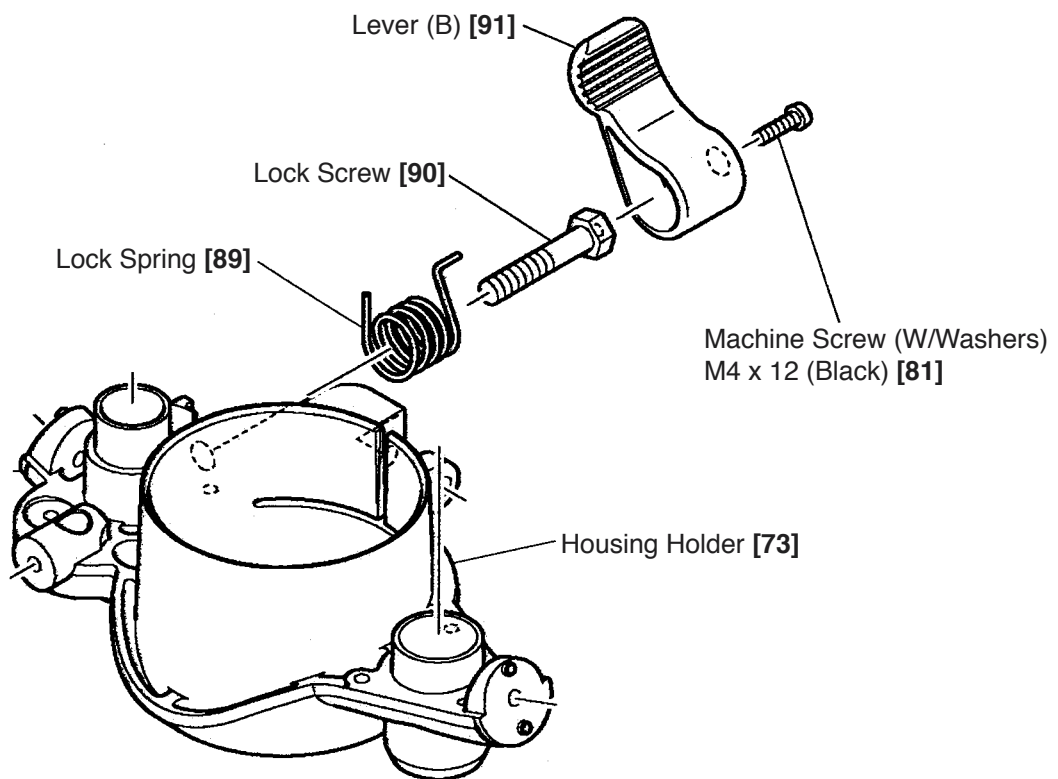


Fig. 12

## 9-2. Reassembly

Reassembly can be accomplished by following the disassembly procedures in reverse. However, special attention should be paid to the following points.

### (1) Reassembly of Lever (B) [91] to the Housing Holder [73]

Mount Base (B) [97] and the Housing Holder [73]. Push the Lock Screw [90] in as far as it will go. Hook the Lock Spring [89] on both the Housing Holder [73] and Lever (B) [91]. Being careful not to loosen the Lock Screw [90], turn Lever (B) [91]. When Lever (B) [91] is positioned as shown in Fig. 13, insert the Lock Screw [90] into Lever (B) [91] and secure them with the Machine Screw (W/Washers) M4 x 12 (Black) [81].

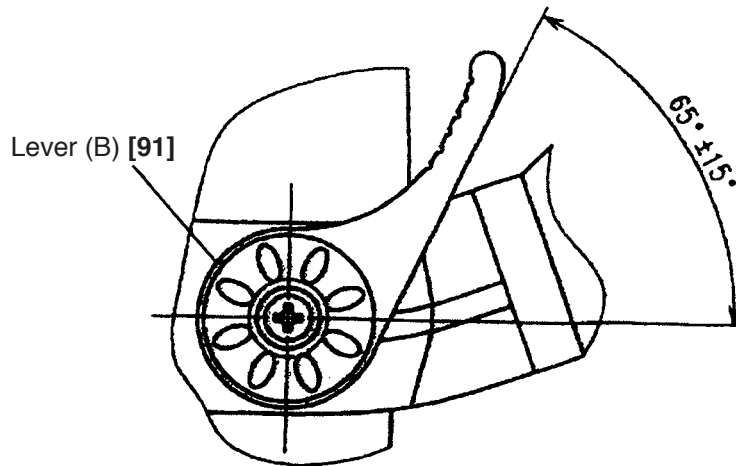


Fig. 13

### (2) Wiring procedure (Fig. 14)

During installation, be careful not to pinch the lead wires between Stator Holder Ass'y [22] and Head Cover (A) [4], Head Cover (B) [3].

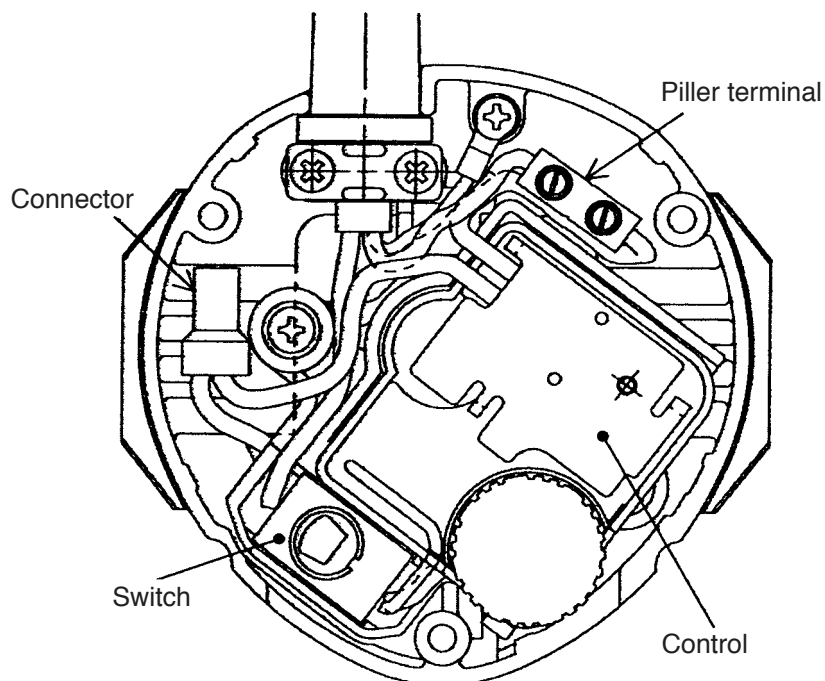


Fig. 14

(3) Wiring diagram (Fig. 15)

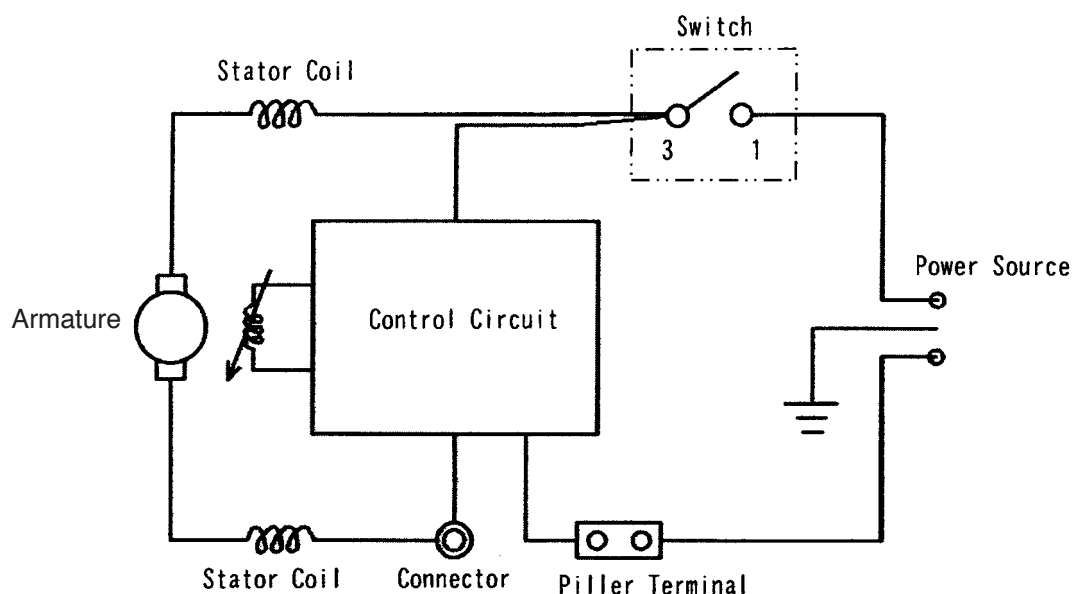


Fig. 15

(4) Tightening torque of screws and bolts:

Machine Screw (W/Sp. Washer) M5 x 60 [30]	3.4 ± 0.7 N·m (35 ± 7 kgf·cm)
Hex. Socket Set Screw M5 x 8 [21]	0.7 ± 0.2 N·m (7.5 ± 2.5 kgf·cm)
Machine Screw (W/Washers) M4 (Black) [2] [13] [81]	1.8 ± 0.4 N·m (18 ± 4 kgf·cm)
Machine Screw (W/Washers) M6 x 40 (Black) [40] [68]	4.9 ± 0.1 N·m (50 ± 10 kgf·cm)
Flat Hd. Screw M5 x 12 [46] [99]	3.4 ± 0.7 N·m (35 ± 7 kgf·cm)
Machine Screw (W/Washers) M4 x 55 (Black) [1]	1.8 ± 0.4 N·m (18 ± 4 kgf·cm)
Piller Terminal [11]	0.39 ± 0.1 N·m (4 ± 1 kgf·cm)
Machine Screw M5 x 6 [48]	3.4 ± 0.7 N·m (35 ± 7 kgf·cm)
Machine Screw (W/Washers) M4 x 16 [5]	1.8 ± 0.4 N·m (18 ± 4 kgf·cm)
Machine Screw (W/Sp. Washer) M4 x 6 [7]	1.8 ± 0.4 N·m (18 ± 4 kgf·cm)
Machine Screw M4 x 10 [75]	1.8 ± 0.4 N·m (18 ± 4 kgf·cm)
Machine Screw M5 x 20 (Black) [78]	3.4 ± 0.7 N·m (35 ± 7 kgf·cm)
Machine Screw M5 x 35 (Black) [83]	3.4 ± 0.7 N·m (35 ± 7 kgf·cm)
Nut M10 [84]	9.8 ± 2 N·m (100 ± 20 kgf·cm)
Machine Screw (W/Washers) M5 x 16 (Black) [87]	3.4 ± 0.7 N·m (35 ± 7 kgf·cm)

### 9-3. Insulation Tests

On completion of disassembly and repair, measure the insulation resistance and conduct the insulation tests (dielectric strength test).

Insulation resistance: 7 M Ω or more with 500 V DC megohm tester

Dielectric strength: AC 2,500 V/1 minute, with no abnormalities

### 9-4. Cleaning the Cover

Clean the exterior of the tool with a soft cloth moistened with soapy water, and dry thoroughly.



### 9-5. No-load Current Value

After no-load operation for 30 minutes, the no-load current value should be as specified below at a frequency of 60 Hz.

Voltage (V)	120
Current (A)	4.0

Note: For the Models M 12VC and KM 12VC, check the no-load current value by setting the dial to "6".

## 10. STANDARD REPAIR TIME (UNIT) SCHEDULES

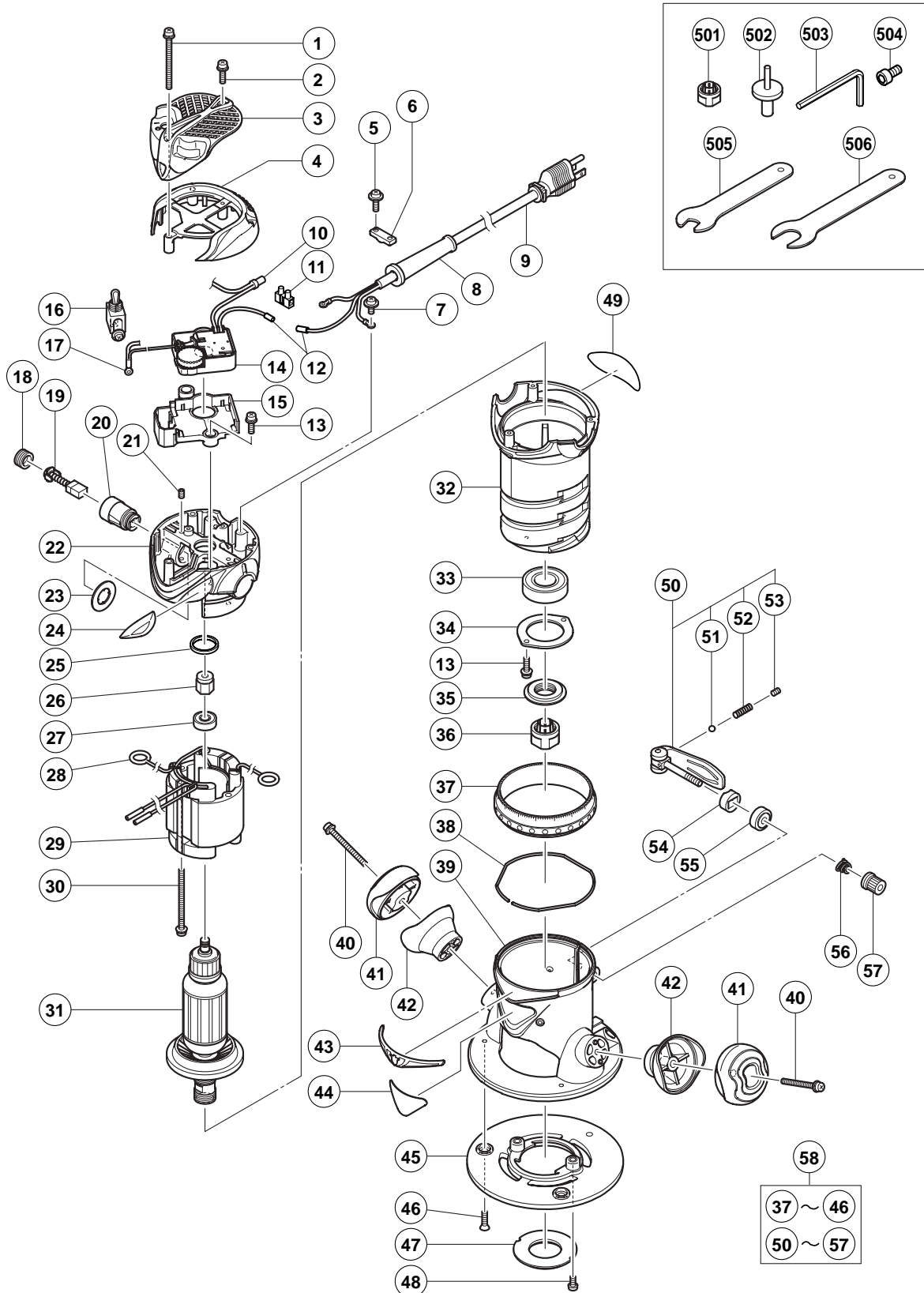
MODEL	Fixed	Variable	10	20	30	40	50	60 min.
M 12VC			Work Flow					
M 12SC								
				Switch Controller Circuit Switch Holder Cord				
	General Assembly		Head Cover (A) Head Cover (B)	Armature Ass'y Rubber Ring Magnet Ball Bearing 608VV Ball Bearing 6004VV		Stator Holder Ass'y Stator Ass'y		
			Collet Chuck	Housing				
			Handle (A) Handle (B)					
			Sub Base (A)					
			Lever (A) Ass'y					
			Ring Stopper Pin	Base (A)				

MODEL	Variable	10	20	30	40	50	60 min.
	Fixed						
KM 12VC KM 12SC		Work Flow					
			Switch Controller Circuit Switch Holder Cord				
	General Assembly of router	Head Cover (A) Head Cover (B)	Armature Ass'y Rubber Ring Magnet Ball Bearing 608VV Ball Bearing 6004VV		Stator Holder Ass'y Stator Ass'y		
		Collet Chuck	Housing				
		Handle (A) Handle (B)					
		Sub Base (A)					
		Lever (A) Ass'y					
		Ring Stopper Pin	Base (A)				
	General Assembly of plunge base	Holder Cover					
		Handle (A) Handle (B)	Housing Holder				
		Lever (A) Lever (B)					
		Stopper Block	Base (B)				

## ELECTRIC TOOL PARTS LIST

ROUTER  
Model M 12VC

2004 • 8 • 5  
(E1)



# PARTS

M 12VC

ITEM NO.	CODE NO.	DESCRIPTION	NO. USED	REMARKS	
1	307-365	MACHINE SCREW (W/WASHERS) M4X55 (BLACK)	3		
2	317-200	MACHINE SCREW (W/WASHERS) M4X8 (BLACK)	1		
3	323-267	HEAD COVER (B)	1		
4	323-266	HEAD COVER (A)	1		
5	954-878	MACHINE SCREW (W/WASHERS) M4X16	2		
6	937-631	CORD CLIP	1		
7	317-333	MACHINE SCREW (W/SP. WASHER) M4X6	1		
8	938-051	CORD ARMOR D10.1	1		
9	500-399Z	CORD	1		
10	959-141	CONNECTOR 50092 (10 PCS.)	1		
11	938-307	PILLAR TERMINAL	1		
12	981-373	TUBE (D)	2		
13	307-081	MACHINE SCREW (W/WASHERS) M4X12 (BLACK)	4		
14	323-273	CONTROLLER CIRCUIT	1		
15	323-274	SWITCH HOLDER	1		
16	955-509	SWITCH (1P SCREW TYPE)	1		
17	930-804	TERMINAL M4.0 (10 PCS.)	1		
18	935-829	BRUSH CAP	2		
19	999-043	CARBON BRUSH (1 PAIR)	2		
20	957-051	BRUSH HOLDER	2		
21	938-477	HEX. SOCKET SET SCREW M5X8	2		
22	323-256	STATOR HOLDER ASS'Y	1	INCLUD. 20, 21	
23	930-706	STOP PLATE	2		
24	323-424	HITACHI PLATE (C)	1		
25	323-420	RUBBER RING	1		
26	307-093	MAGNET	1		
27	608-VVM	BALL BEARING 608VVC2PS2L	1		
28	930-703	BRUSH TERMINAL	2		
29	340-595D	STATOR ASS'Y 120V	1	INCLUD. 28	
30	943-430	MACHINE SCREW (W/SP. WASHER) M5X60	2		
31	360-668U	ARMATURE ASS'Y 120V	1	INCLUD. 27, 33	
32	323-255	HOUSING	1		
33	600-4VV	BALL BEARING 6004VVCMP2L	1		
34	323-257	BEARING COVER	1		
35	323-258	THRUST NUT	1		
36	323-421	COLLET CHUCK 1/2"	1		
37	323-260	RING	1		
38	323-264	STOPPER PIN	1		
39	323-259	BASE (A)	1		
40	323-263	MACHINE SCREW (W/WASHERS) M6X40 (BLACK)	2		
41	323-261	HANDLE (B)	2		
42	323-262	HANDLE (A)	2		
43	323-423	DECORATION PLATE (B)	1		
44	323-422	HITACHI PLATE (A)	1		
45	323-265	SUB BASE (A)	1		
46	949-332	FLAT HD. SCREW M5X12 (10 PCS.)	3		
47	323-272	TEMPLATE GUIDE ADAPTER	1		
48	949-234	MACHINE SCREW M5X6 (10 PCS.)	2		
49		NAME PLATE	1		
50	323-270	LEVER (A) ASS'Y	1	INCLUD. 51-53	
51	959-155	STEEL BALL D3.97 (10 PCS.)	1		

## PARTS

**M 12VC**

[illegible]

**M 12VC**

## OPTIONAL ACCESSORIES

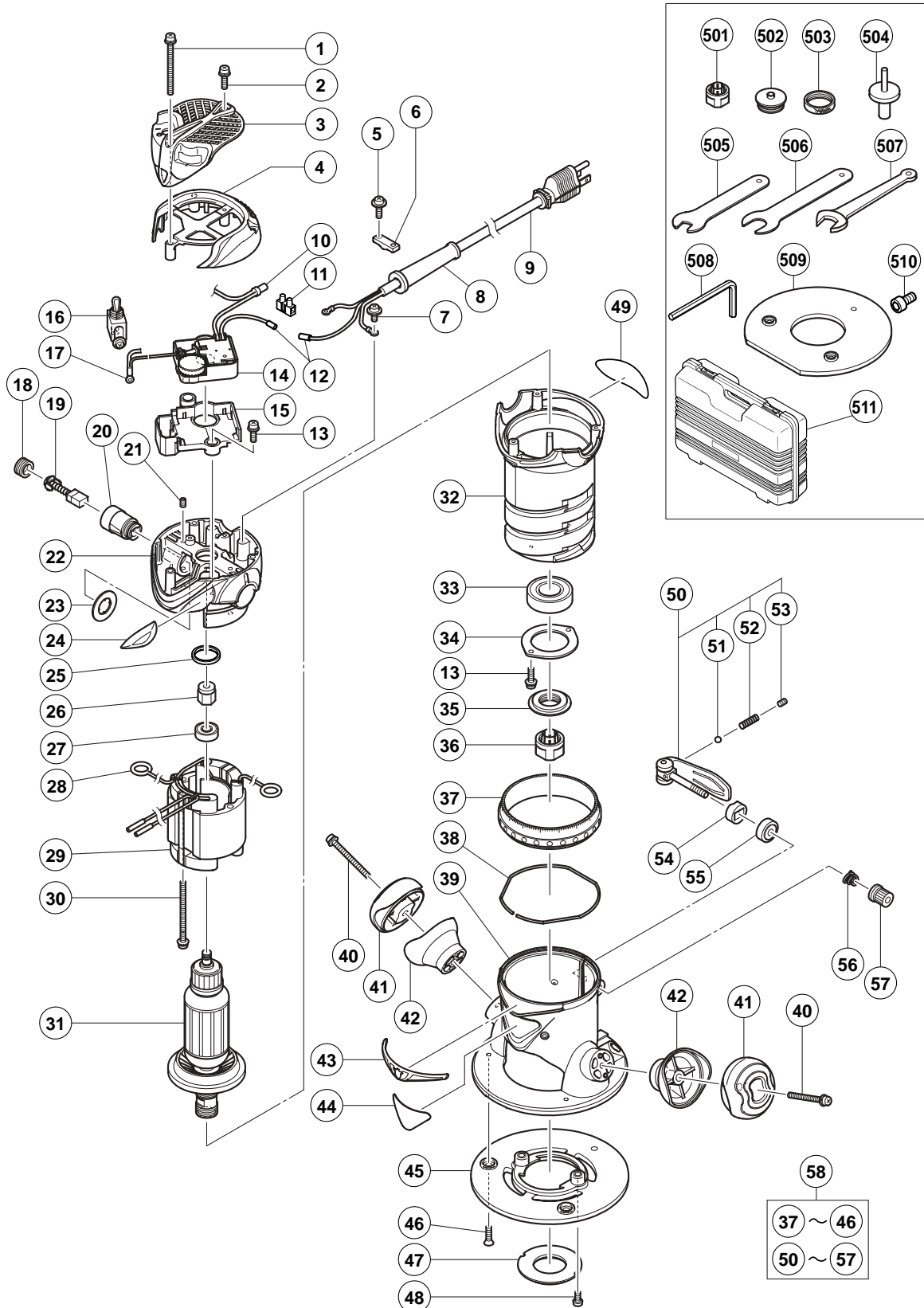
- 4 -

## ELECTRIC TOOL PARTS LIST

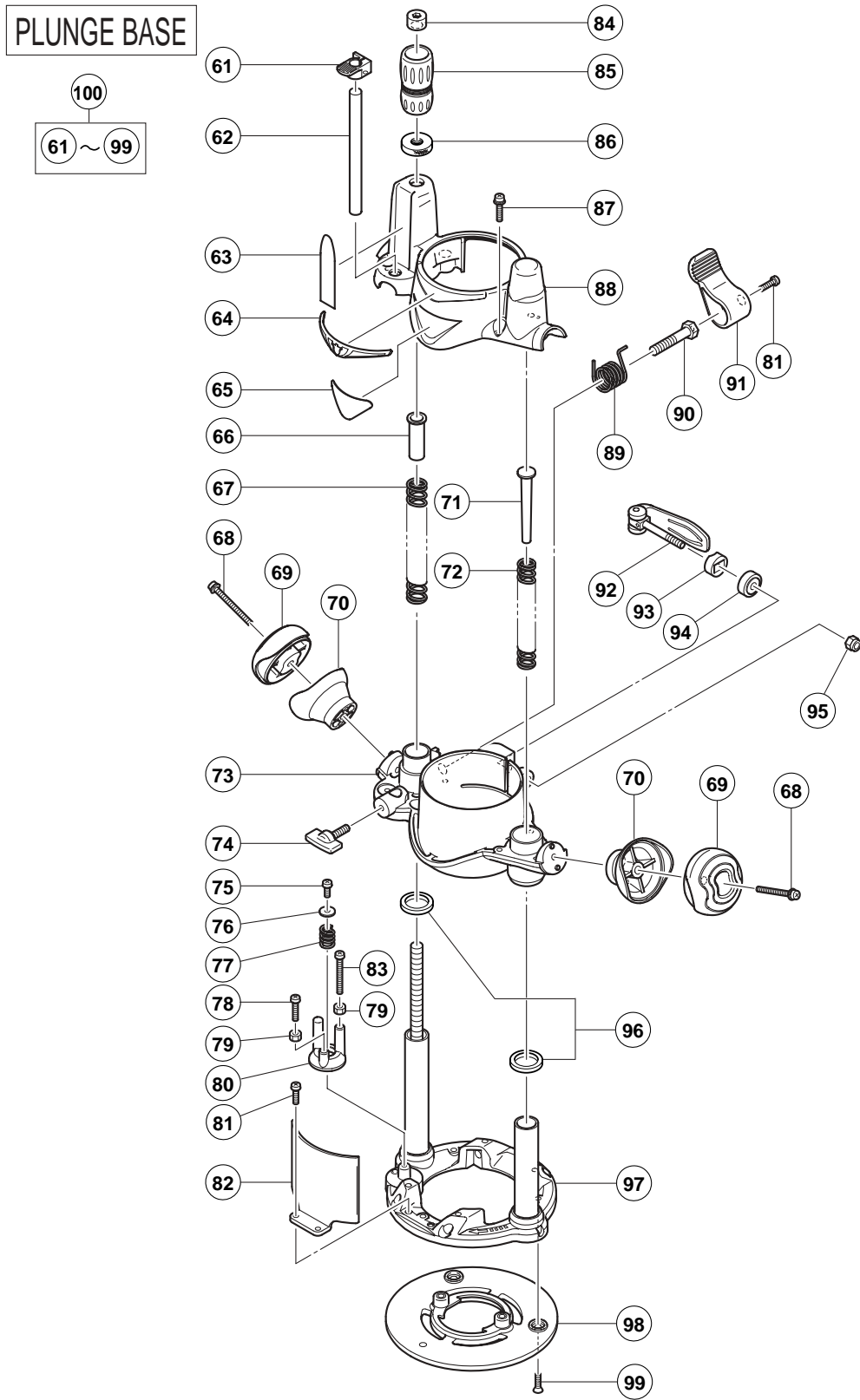
### ROUTER KIT Model KM 12VC

2004 • 8 • 5

(E1)







# PARTS

KM 12VC

ITEM NO.	CODE NO.	DESCRIPTION	NO. USED	REMARKS	
1	307-365	MACHINE SCREW (W/WASHERS) M4X55 (BLACK)	3		
2	317-200	MACHINE SCREW (W/WASHERS) M4X8 (BLACK)	1		
3	323-267	HEAD COVER (B)	1		
4	323-266	HEAD COVER (A)	1		
5	954-878	MACHINE SCREW (W/WASHERS) M4X16	2		
6	937-631	CORD CLIP	1		
7	317-333	MACHINE SCREW (W/SP. WASHER) M4X6	1		
8	938-051	CORD ARMOR D10.1	1		
9	500-399Z	CORD	1		
10	959-141	CONNECTOR 50092 (10 PCS.)	1		
11	938-307	PILLAR TERMINAL	1		
12	981-373	TUBE (D)	2		
13	307-081	MACHINE SCREW (W/WASHERS) M4X12 (BLACK)	4		
14	323-273	CONTROLLER CIRCUIT	1		
15	323-274	SWITCH HOLDER	1		
16	955-509	SWITCH (1P SCREW TYPE)	1		
17	930-804	TERMINAL M4.0 (10 PCS.)	1		
18	935-829	BRUSH CAP	2		
19	999-043	CARBON BRUSH (1 PAIR)	2		
20	957-051	BRUSH HOLDER	2		
21	938-477	HEX. SOCKET SET SCREW M5X8	2		
22	323-256	STATOR HOLDER ASS'Y	1	INCLUD. 20, 21	
23	930-706	STOP PLATE	2		
24	323-424	HITACHI PLATE (C)	1		
25	323-420	RUBBER RING	1		
26	307-093	MAGNET	1		
27	608-VVM	BALL BEARING 608VVC2PS2L	1		
28	930-703	BRUSH TERMINAL	2		
29	340-595D	STATOR ASS'Y 120V	1	INCLUD. 28	
30	943-430	MACHINE SCREW (W/SP. WASHER) M5X60	2		
31	360-668U	ARMATURE ASS'Y 120V	1	INCLUD. 27, 33	
32	323-255	HOUSING	1		
33	600-4VV	BALL BEARING 6004VVCMP2L	1		
34	323-257	BEARING COVER	1		
35	323-258	THRUST NUT	1		
36	323-421	COLLET CHUCK 1/2"	1		
37	323-260	RING	1		
38	323-264	STOPPER PIN	1		
39	323-259	BASE (A)	1		
40	323-263	MACHINE SCREW (W/WASHERS) M6X40 (BLACK)	2		
41	323-261	HANDLE (B)	2		
42	323-262	HANDLE (A)	2		
43	323-423	DECORATION PLATE (B)	1		
44	323-422	HITACHI PLATE (A)	1		
45	323-265	SUB BASE (A)	1		
46	949-332	FLAT HD. SCREW M5X12 (10 PCS.)	3		
47	323-272	TEMPLATE GUIDE ADAPTER	1		
48	949-234	MACHINE SCREW M5X6 (10 PCS.)	2		
49		NAME PLATE	1		
50	323-270	LEVER (A) ASS'Y	1	INCLUD. 51-53	
51	959-155	STEEL BALL D3.97 (10 PCS.)	1		

# PARTS

KM 12VC

ITEM NO.	CODE NO.	DESCRIPTION	NO. USED	REMARKS	
52	982-454	SPRING (C)	1		
53	938-477	HEX. SOCKET SET SCREW M5X8	1		
54	323-268	LEVER SLEEVE	1		
55	323-269	LEVER HOLDER	1		
56	306-024	SPRING	1		
57	323-271	KNOB NUT	1		
58	323-348	FIXED BASE ASS'Y	1	INCLUD. 37-46, 50, 54-57	
61	323-287	MARKER	1		
62	323-286	STOPPER POLE	1		
63	323-279	SCALE (INCH)	1		
64	323-423	DECORATION PLATE (B)	1		
65	323-422	HITACHI PLATE (A)	1		
66	323-288	SPRING GUIDE (L)	1		
67	323-289	SPRING (L)	1		
68	323-263	MACHINE SCREW (W/WASHERS) M6X40 (BLACK)	2		
69	323-261	HANDLE (B)	2		
70	323-262	HANDLE (A)	2		
71	323-290	SPRING GUIDE (R)	1		
72	323-291	SPRING (R)	1		
73	323-275	HOUSING HOLDER	1		
74	301-806	WING BOLT M6X15	1		
75	949-216	MACHINE SCREW M4X10 (10 PCS.)	1		
76	323-282	WASHER	1		
77	971-858	SPRING (A)	1		
78	302-196	MACHINE SCREW M5X20 (BLACK)	1		
79	302-012	NUT M5 (BLACK)	2		
80	323-281	STOPPER BLOCK	1		
81	307-081	MACHINE SCREW (W/WASHERS) M4X12 (BLACK)	3		
82	323-292	CHIP COVER	1		
83	302-197	MACHINE SCREW M5X35 (BLACK)	1		
84	323-427	NUT M10	1		
85	323-278	KNOB	1		
86	323-428	SPECIAL NUT (A) M10	1		
87	307-294	MACHINE SCREW (W/WASHERS) M5X16 (BLACK)	4		
88	323-277	HOLDER COVER	1		
89	323-284	LOCK SPRING	1		
90	323-285	LOCK SCREW	1		
91	323-283	LEVER (B)	1		
92	323-280	LEVER (A)	1		
93	323-268	LEVER SLEEVE	1		
94	323-269	LEVER HOLDER	1		
95	311-144	NYLON NUT M6	1		
96	323-426	FELT	2		
97	323-276	BASE (B)	1		
98	323-265	SUB BASE (A)	1		
99	949-332	FLAT HD. SCREW M5X12 (10 PCS.)	3		
100	323-349	PLUNGE BASE ASS'Y	1	INCLUD. 61-99	

**KM 12VC**

## OPTIONAL ACCESSORIES

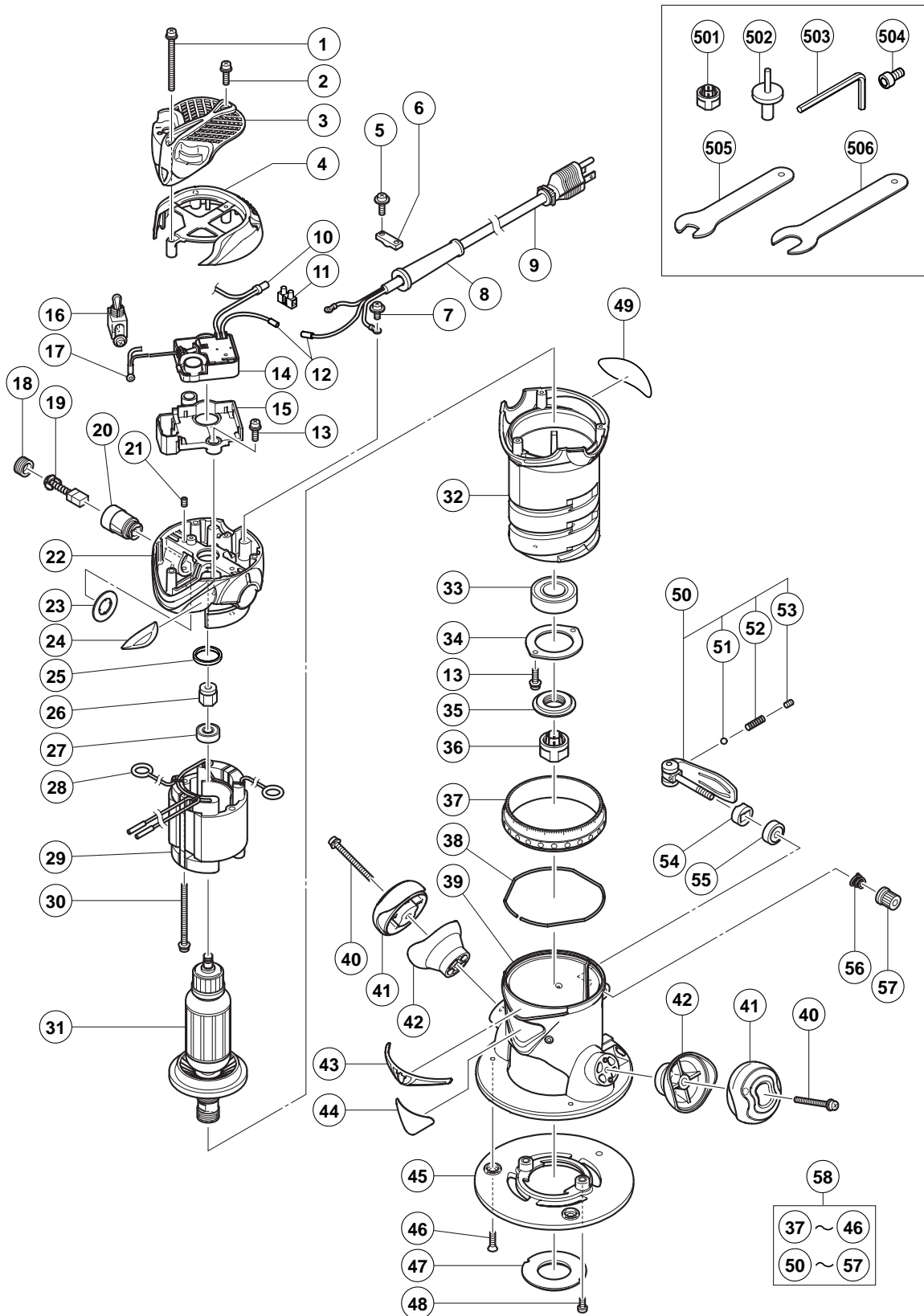
- 5 -

[illegible]

## ELECTRIC TOOL PARTS LIST

ROUTER  
Model M 12SC

2004 • 8 • 5  
(E1)



# PARTS

M 12SC

ITEM NO.	CODE NO.	DESCRIPTION	NO. USED	REMARKS	
1	307-365	MACHINE SCREW (W/WASHERS) M4X55 (BLACK)	3		
2	317-200	MACHINE SCREW (W/WASHERS) M4X8 (BLACK)	1		
3	323-306	HEAD COVER (B)	1		
4	323-266	HEAD COVER (A)	1		
5	954-878	MACHINE SCREW (W/WASHERS) M4X16	2		
6	937-631	CORD CLIP	1		
7	317-333	MACHINE SCREW (W/SP. WASHER) M4X6	1		
8	938-051	CORD ARMOR D10.1	1		
9	500-399Z	CORD	1		
10	959-141	CONNECTOR 50092 (10 PCS.)	1		
11	938-307	PILLAR TERMINAL	1		
* 12	981-373	TUBE (D)	2	FOR CORD	
13	307-081	MACHINE SCREW (W/WASHERS) M4X12 (BLACK)	4		
14	323-307	CONTROLLER CIRCUIT	1		
15	323-274	SWITCH HOLDER	1		
16	955-509	SWITCH (1P SCREW TYPE)	1		
17	930-804	TERMINAL M4.0 (10 PCS.)	1		
18	935-829	BRUSH CAP	2		
19	999-043	CARBON BRUSH (1 PAIR)	2		
20	957-051	BRUSH HOLDER	2		
21	938-477	HEX. SOCKET SET SCREW M5X8	2		
22	323-256	STATOR HOLDER ASS'Y	1	INCLUD. 20, 21	
23	930-706	STOP PLATE	2		
24	323-552	HITACHI PLATE (C)	1		
25	323-420	RUBBER RING	1		
26	307-093	MAGNET	1		
27	608-VVM	BALL BEARING 608VVC2PS2L	1		
28	930-703	BRUSH TERMINAL	2		
29	340-595D	STATOR ASS'Y 120V	1	INCLUD. 28	
30	943-430	MACHINE SCREW (W/SP. WASHER) M5X60	2		
31	360-668U	ARMATURE ASS'Y 120V	1	INCLUD. 27, 33	
32	323-255	HOUSING	1		
33	600-4VV	BALL BEARING 6004VVCMP2L	1		
34	323-257	BEARING COVER	1		
35	323-258	THRUST NUT	1		
36	323-421	COLLET CHUCK 1/2"	1		
37	323-260	RING	1		
38	323-264	STOPPER PIN	1		
39	323-259	BASE (A)	1		
40	323-263	MACHINE SCREW (W/WASHERS) M6X40 (BLACK)	2		
41	323-261	HANDLE (B)	2		
42	323-262	HANDLE (A)	2		
43	323-423	DECORATION PLATE (B)	1		
44	323-422	HITACHI PLATE (A)	1		
45	323-265	SUB BASE (A)	1		
46	949-332	FLAT HD. SCREW M5X12 (10 PCS.)	3		
47	323-272	TEMPLATE GUIDE ADAPTER	1		
48	949-234	MACHINE SCREW M5X6 (10 PCS.)	2		
49		NAME PLATE	1		
50	323-270	LEVER (A) ASS'Y	1	INCLUD. 51-53	
51	959-155	STEEL BALL D3.97 (10 PCS.)	1		

## PARTS

**M 12SC**

[illegible]



## STANDARD ACCESSORIES

**M 12SC**

[illegible]

## OPTIONAL ACCESSORIES

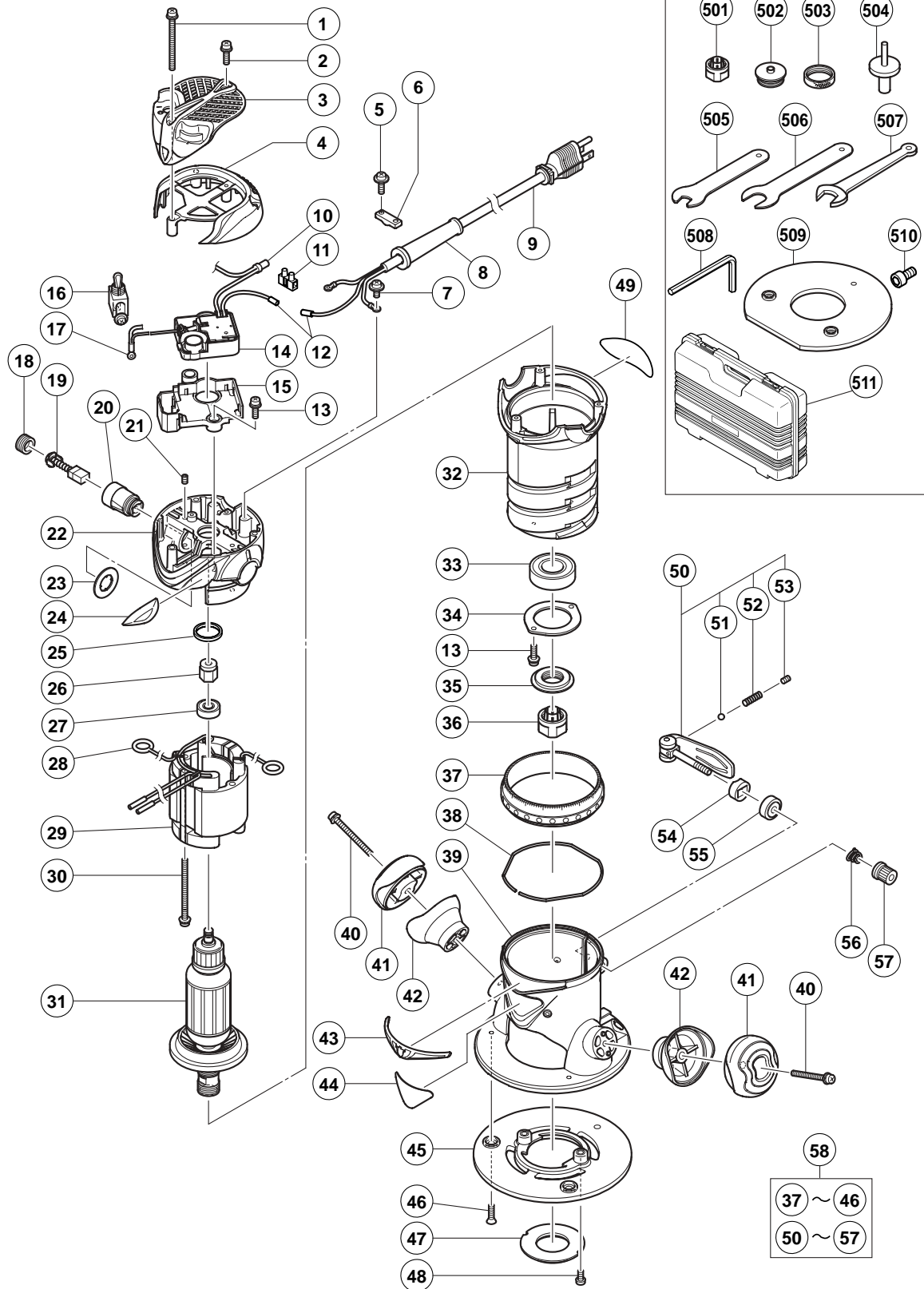
[illegible]

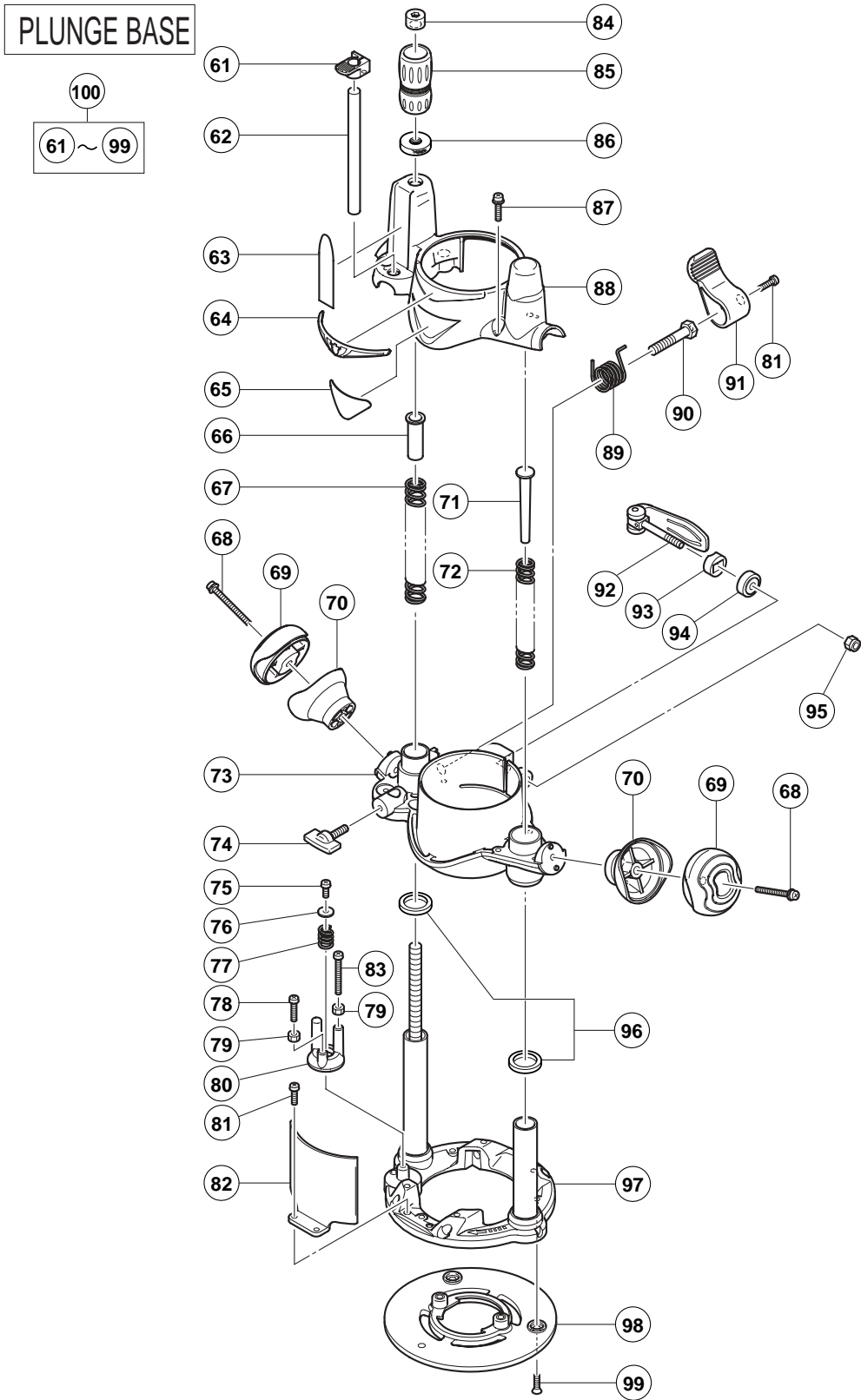
## ELECTRIC TOOL PARTS LIST

### ROUTER KIT Model KM 12SC

2004 • 8 • 5

(E1)





# PARTS

KM 12SC

ITEM NO.	CODE NO.	DESCRIPTION	NO. USED	REMARKS	
1	307-365	MACHINE SCREW (W/WASHERS) M4X55 (BLACK)	3		
2	317-200	MACHINE SCREW (W/WASHERS) M4X8 (BLACK)	1		
3	323-306	HEAD COVER (B)	1		
4	323-266	HEAD COVER (A)	1		
5	954-878	MACHINE SCREW (W/WASHERS) M4X16	2		
6	937-631	CORD CLIP	1		
7	317-333	MACHINE SCREW (W/SP. WASHER) M4X6	1		
8	938-051	CORD ARMOR D10.1	1		
9	500-399Z	CORD	1		
10	959-141	CONNECTOR 50092 (10 PCS.)	1		
11	938-307	PILLAR TERMINAL	1		
* 12	981-373	TUBE (D)	2	FOR CORD	
13	307-081	MACHINE SCREW (W/WASHERS) M4X12 (BLACK)	4		
14	323-307	CONTROLLER CIRCUIT	1		
15	323-274	SWITCH HOLDER	1		
16	955-509	SWITCH (1P SCREW TYPE)	1		
17	930-804	TERMINAL M4.0 (10 PCS.)	1		
18	935-829	BRUSH CAP	2		
19	999-043	CARBON BRUSH (1 PAIR)	2		
20	957-051	BRUSH HOLDER	2		
21	938-477	HEX. SOCKET SET SCREW M5X8	2		
22	323-256	STATOR HOLDER ASS'Y	1	INCLUD. 20, 21	
23	930-706	STOP PLATE	2		
24	323-552	HITACHI PLATE (C)	1		
25	323-420	RUBBER RING	1		
26	307-093	MAGNET	1		
27	608-VVM	BALL BEARING 608VVC2PS2L	1		
28	930-703	BRUSH TERMINAL	2		
29	340-595D	STATOR ASS'Y 120V	1	INCLUD. 28	
30	943-430	MACHINE SCREW (W/SP. WASHER) M5X60	2		
31	360-668U	ARMATURE ASS'Y 120V	1	INCLUD. 27, 33	
32	323-255	HOUSING	1		
33	600-4VV	BALL BEARING 6004VVCMP2L	1		
34	323-257	BEARING COVER	1		
35	323-258	THRUST NUT	1		
36	323-421	COLLET CHUCK 1/2"	1		
37	323-260	RING	1		
38	323-264	STOPPER PIN	1		
39	323-259	BASE (A)	1		
40	323-263	MACHINE SCREW (W/WASHERS) M6X40 (BLACK)	2		
41	323-261	HANDLE (B)	2		
42	323-262	HANDLE (A)	2		
43	323-423	DECORATION PLATE (B)	1		
44	323-422	HITACHI PLATE (A)	1		
45	323-265	SUB BASE (A)	1		
46	949-332	FLAT HD. SCREW M5X12 (10 PCS.)	3		
47	323-272	TEMPLATE GUIDE ADAPTER	1		
48	949-234	MACHINE SCREW M5X6 (10 PCS.)	2		
49		NAME PLATE	1		
50	323-270	LEVER (A) ASS'Y	1	INCLUD. 51-53	
51	959-155	STEEL BALL D3.97 (10 PCS.)	1		

# PARTS

KM 12SC

ITEM NO.	CODE NO.	DESCRIPTION	NO. USED	REMARKS	
52	982-454	SPRING (C)	1		
53	938-477	HEX. SOCKET SET SCREW M5X8	1		
54	323-268	LEVER SLEEVE	1		
55	323-269	LEVER HOLDER	1		
56	306-024	SPRING	1		
57	323-271	KNOB NUT	1		
58	323-348	FIXED BASE ASS'Y	1	INCLUD. 37-46, 50, 54-57	
61	323-287	MARKER	1		
62	323-286	STOPPER POLE	1		
63	323-279	SCALE (INCH)	1		
64	323-423	DECORATION PLATE (B)	1		
65	323-422	HITACHI PLATE (A)	1		
66	323-288	SPRING GUIDE (L)	1		
67	323-289	SPRING (L)	1		
68	323-263	MACHINE SCREW (W/WASHERS) M6X40 (BLACK)	2		
69	323-261	HANDLE (B)	2		
70	323-262	HANDLE (A)	2		
71	323-290	SPRING GUIDE (R)	1		
72	323-291	SPRING (R)	1		
73	323-275	HOUSING HOLDER	1		
74	301-806	WING BOLT M6X15	1		
75	949-216	MACHINE SCREW M4X10 (10 PCS.)	1		
76	323-282	WASHER	1		
77	971-858	SPRING (A)	1		
78	302-196	MACHINE SCREW M5X20 (BLACK)	1		
79	302-012	NUT M5 (BLACK)	2		
80	323-281	STOPPER BLOCK	1		
81	307-081	MACHINE SCREW (W/WASHERS) M4X12 (BLACK)	3		
82	323-292	CHIP COVER	1		
83	302-197	MACHINE SCREW M5X35 (BLACK)	1		
84	949-560	NUT M10 (10 PCS.)	1		
85	323-278	KNOB	1		
86	323-428	SPECIAL NUT (A) M10	1		
87	307-294	MACHINE SCREW (W/WASHERS) M5X16 (BLACK)	4		
88	323-277	HOLDER COVER	1		
89	323-284	LOCK SPRING	1		
90	323-285	LOCK SCREW	1		
91	323-283	LEVER (B)	1		
92	323-280	LEVER (A)	1		
93	323-268	LEVER SLEEVE	1		
94	323-269	LEVER HOLDER	1		
95	311-144	NYLON NUT M6	1		
96	323-426	FELT	2		
97	323-276	BASE (B)	1		
98	323-265	SUB BASE (A)	1		
99	949-332	FLAT HD. SCREW M5X12 (10 PCS.)	3		
100	323-349	PLUNGE BASE ASS'Y	1	INCLUD. 61-99	

## STANDARD ACCESSORIES

KM 12SC

ITEM NO.	CODE NO.	DESCRIPTION	NO. USED	REMARKS	
501	323-293	COLLET CHUCK 1/4"	1		
502	323-298	TEMPLATE GUIDE D7.9	1		
503	323-299	TEMPLATE GUIDE D9.5	1		
504	323-300	TEMPLATE GUIDE D11.1	1		
505	323-301	TEMPLATE GUIDE D12.7	1		
506	323-302	TEMPLATE GUIDE D15.9	1		
507	323-303	TEMPLATE GUIDE D19.1	1		
508	323-304	TEMPLATE GUIDE D20.2	1		
509	323-305	LOCK NUT	1		
510	323-296	CENTERING GAUGE	1		
511	323-294	WRENCH 16MM	1		
512	323-295	WRENCH 23MM	1		
513	960-101	WRENCH 10MM	1		
514	944-458	HEX. BAR WRENCH 4MM	1		
515	323-297	SUB BASE (B)	1		
516	949-819	HEX. SOCKET HD. BOLT M5X10 (10 PCS.)	2		
517	323-358	CASE	1		

## OPTIONAL ACCESSORIES

ITEM NO.	CODE NO.	DESCRIPTION	NO. USED	REMARKS	
601	313-765	STRAIGHT BIT (TCT) D1/2"X1/2"	1		
602	323-346	DUST COLLECTOR SET	1	INCLUD. 603, 604	
603	323-347	KNOB NUT (A)	2		
604	302-317	MACHINE SCREW M5X16 (BLACK)	2		
605	323-342	STRAIGHT GUIDE ASS'Y	1	INCLUD. 606-610	
606	323-345	GUIDE BAR	2		
607	323-344	STRAIGHT GUIDE	1		
608	323-343	BAR HOLDER (A)	1		
609	956-793	FEED SCREW	1		
610	301-806	WING BOLT M6X15	3		

[illegible]

