

MODELS

M 8V2

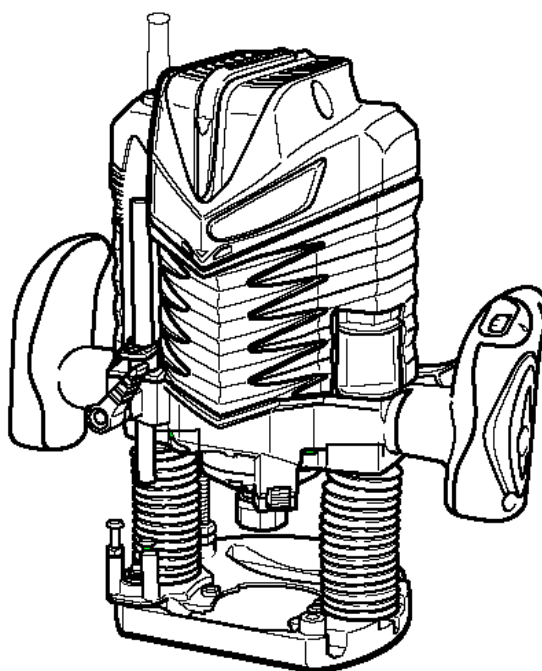
M 8SA2

Hitachi

Power Tools

ROUTER
M 8V2
M 8SA2

TECHNICAL DATA
AND
SERVICE MANUAL



LIST Nos. M 8V2: 0671
M 8SA2: 0672

Mar. 2006

REMARK:

Throughout this TECHNICAL DATA AND SERVICE MANUAL, a symbol(s) is(are) used in the place of company name(s) and model name(s) of our competitor(s). The symbol(s) utilized here is(are) as follows:

Symbol Utilized	Competitor	
	Company Name	Model Name
C1	MAKITA	RP1110C
C2		RP0910
D1	DEWALT	DW621K
D2		DW620



CONTENTS

	Page
1. PRODUCT NAME	1
2. MARKETING OBJECTIVE	1
3. APPLICATIONS	1
4. SELLING POINTS	1
4-1. Selling Point Descriptions	2
5. SPECIFICATIONS	3
6. COMPARISONS WITH SIMILAR PRODUCTS	4
7. PRECAUTIONS IN SALES PROMOTION	4
7-1. Handling Instructions	4
7-2. Name Plate	5
8. REFERENCE MATTERS	5
8-1. Collet Chuck	5
9. PRECAUTIONS IN DISASSEMBLY AND REASSEMBLY	5
9-1. Disassembly	6
9-2. Reassembly	9
9-3. Insulation Tests	11
9-4. Cleaning the Cover	11
9-5. No-load Current Value	11
9-6. Product Accuracy	11
10. STANDARD REPAIR TIME (UNIT) SCHEDULES	12
Assembly Diagram for Model M 8V2	
Assembly Diagram for Model M 8SA2	

1. PRODUCT NAME

Hitachi Router, Models M 8V2 Variable speed

M 8SA2 Single speed

2. MARKETING OBJECTIVE

The new Models M 8V2 and M 8SA2 are the upgraded versions of the current Models M 8 and M 8V which have been sold for about 17 years since the sales start. With these new models, we aim to reinforce our router series.

The key features of the Models M 8V2 and M 8SA2 are as follows:

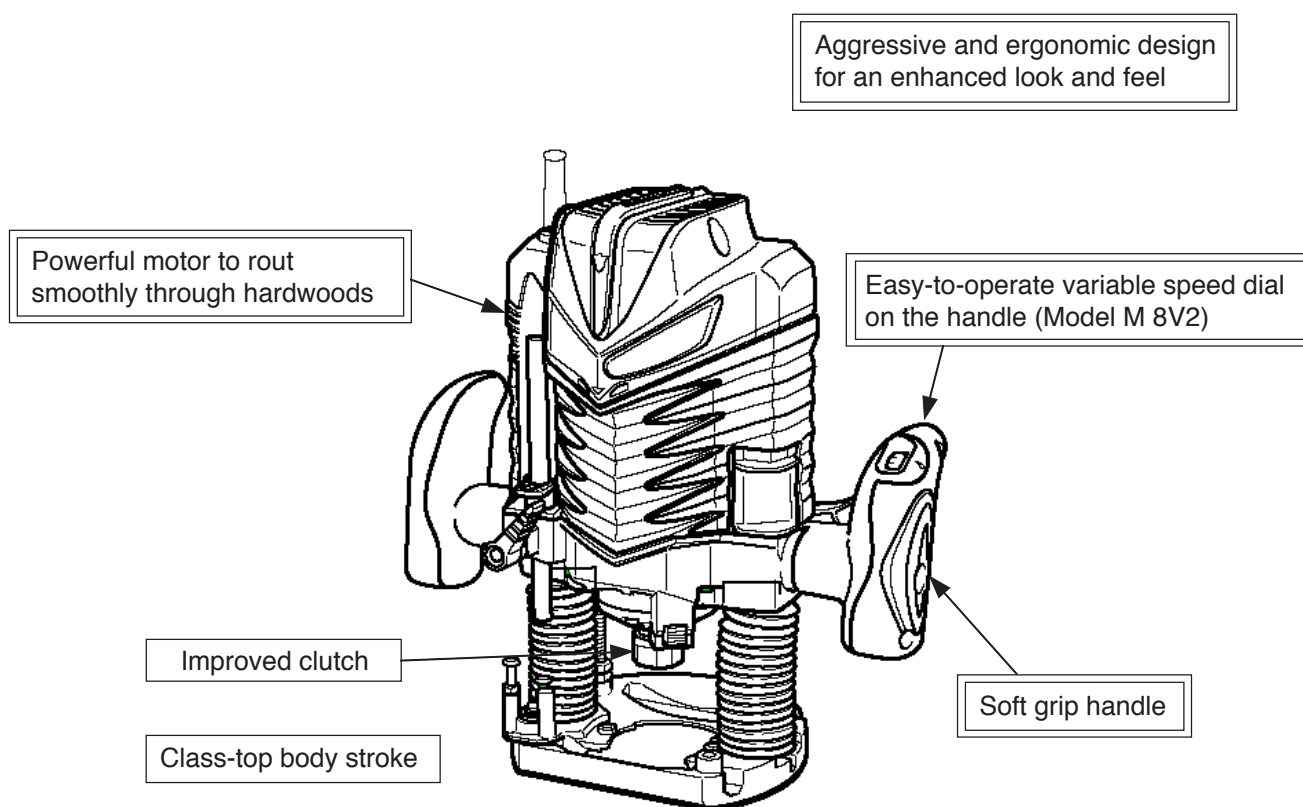
- (1) Variable speed dial on the handle for easy speed adjustment (Model M 8V2 only)
- (2) Powerful motor (Model M 8V2; 1,150 W/Model M 8SA2: 900 W)

With the new Models M 8V2 and M 8SA2, please expand the sales of our router series.

3. APPLICATIONS

Groove cutting, chamfering, window cutting, trimming, shaping and pattern cutting

4. SELLING POINTS



Model M 8V2

4-1. Selling Point Descriptions

(1) Powerful motor to rout smoothly through hardwoods

A powerful and fast motor was developed for the Models M 8V2 and M 8SA2. The fan is made of aluminum and it has a ring-shaped junction at the outer circumference as shown in Fig. 1.

Thanks to the unique structure, the moment of inertia of the armature that is an element for increasing the cutting efficiency is increased and the class-top cutting speed is obtained.

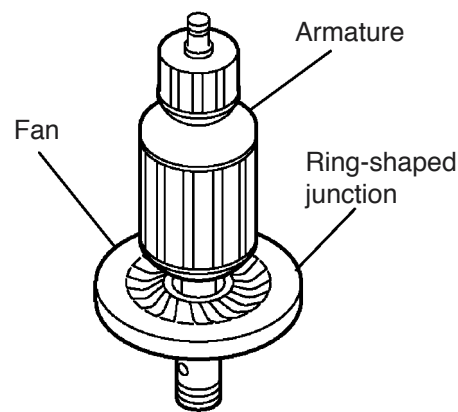
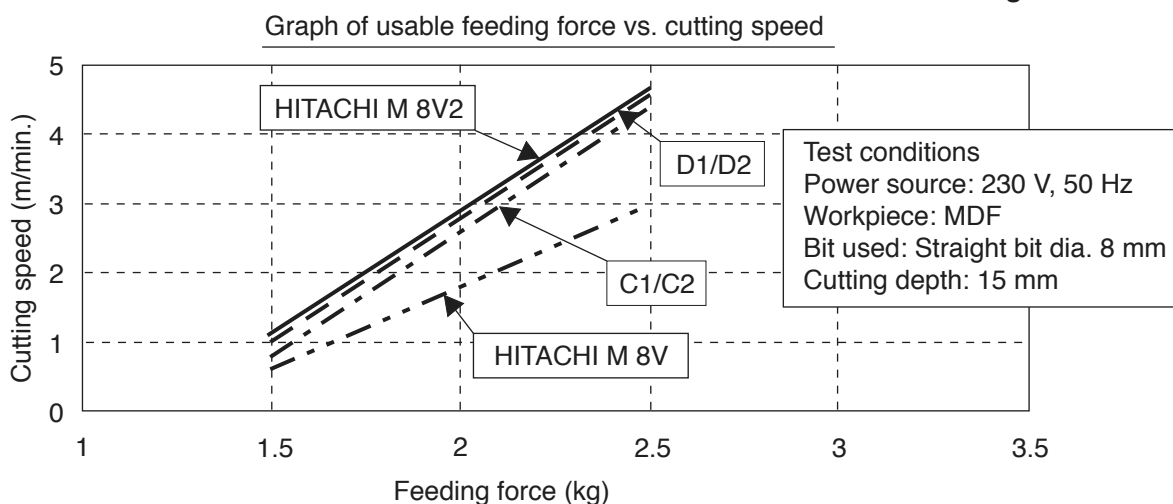


Fig. 1



(2) Easy-to-operate variable speed dial on the handle (Model M 8V2)

A dial for the rotation speed control is provided on the handle (Fig. 2). Thanks to this unique structure, the operator can change the rotation speed without releasing the hand from the handle. So when cutting workpieces, the operator can adjust the rotation speed finely while checking the cutting condition.

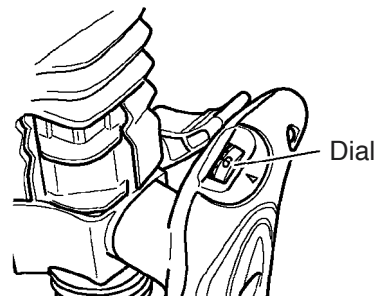


Fig. 2

(3) Improved clutch

The Models M 8V2 and M 8SA2 are provided with the collet chuck that clutches the bit into the armature shaft for improved clutch.

Table 1 Loosening torque to tightening torque

Tightening torque Model	100 kg-cm	200 kg-cm
M 8V2/M 8SA2	80 kg-cm	180 kg-cm
M 8V/M 8	—	35 kg-cm

(4) Class-top body stroke

The Models M 8V2 and M 8SA2 are provided with class-top main body stroke.

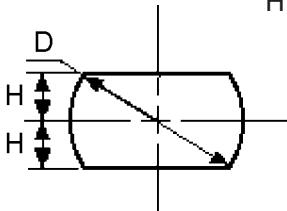


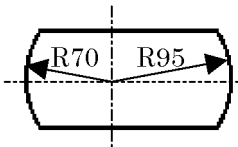
Table 2 Main body stroke

	HITACHI		C1/C2	D1/D2
	M 8V2 (M 8SA2)	M 8V (M 8)		
Main body stroke (mm)	60 (2-3/8")	50 (1-31/32")	57 (2-1/4")	55 (2-5/32")

5. SPECIFICATIONS

Model		M 8V2			M 8SA2		
Collet chuck capacity		8 mm (or 1/4")					
Type of power source		AC single-phase 50 Hz or 60 Hz					
Type of motor		AC single-phase commutator motor					
Voltage and input		Voltage (V)	Current (A)	Input (W)	Voltage (V)	Current (A)	Input (W)
		110	11	1,150	—	—	—
		120	10.1	1,150	—	—	—
		230	5.3	1,150	230	4.1	900
		240	5.1	1,150	240	3.9	900
Enclosure		Head cover		Polycarbonate resin			
		Housing		Polycarbonate resin, elastomer			
		End bracket		Die-cast aluminum alloy			
		Base		Die-cast aluminum alloy			
		Handle R (A) Handle L (A)		Polycarbonate resin			
		Handle R (B) Handle L (B)		Polycarbonate resin, elastomer			
Type of switch		Dustproof snap switch					
Main body stroke		60 mm (2-3/8")					
Speed	No-load	11,000 to 25,000/min.			25,000/min.		
	Full-load	11,000 to 24,500/min.			17,000/min.		
Weight		3.6 kg (7.9 lbs)			3.5 kg (7.7 lbs)		
Standard accessories		8 mm (or 1/4") collet chuck Template guide Straight guide Dust collector (Except for the U.S.A., AUS, NZ, South Africa) Chuck sleeve (West Europe except for U.K., North Europe only) 23 mm wrench Case (Model M 8V2 only except for the U.S.A. and Russia)					

6. COMPARISONS WITH SIMILAR PRODUCTS

Maker			HITACHI	C1/C2	D1/D2
Model name			M 8V2/M 8SA2		
Power	Europe	(W)	1,150/900	1,100/900	1,100/900
	USA	(HP)	2-1/4	—	2
No-load speed		(/min.)	11,000 to 25,000 /25,000	8,000 to 24,000 /27,000	8,000 to 24,000 /24,000
No-load noise level		(dB)	79.0	77.0	80.4
Collet chuck capacity		(mm)	8 (1/4")	8 (1/4")	8 (1/4")
Main body stroke		(mm)	60 (2-3/8")	57 (2-1/4")	55 (2-5/32")
Weight			3.6 kg (7.9 lbs) /3.5 kg (7.7 lbs)	3.4 kg (7.5 lbs) /3.3 kg (7.3 lbs)	3.1 kg (6.8 lbs)
Base configuration		D H mm mm	150 (5-29/32") 55 (2-5/32")	150 (5-29/32") 55 (2-5/32")	Below 55 (2-5/32")
					
Position of dial			Handle	Top cover	Top cover

7. PRECAUTIONS IN SALES PROMOTION

In the interest of promoting the safest and most efficient use of the Models M 8V2 and M 8SA2 Routers by all of our customers, it is very important that at the time of sale the salesperson carefully ensures that the buyer seriously recognizes the importance of the contents of the Handling Instructions, and fully understands the meaning of the precautions listed on the Caution Plate attached to each tool.

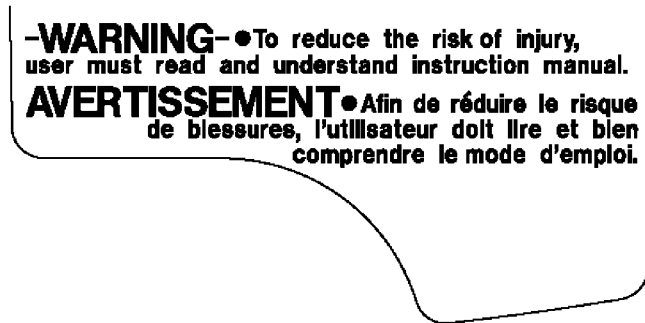
7-1. Handling Instructions

Although every effort is made in each step of design, manufacture and inspection to provide protection against safety hazards, the dangers inherent in the use of any electric power tool cannot be completely eliminated. Accordingly, general precautions and suggestions for the use of electric power tools, and specific precautions and suggestions for the use of the router is listed in the Handling Instructions to enhance the safe, efficient use of the tool by the customer. Salespersons must be thoroughly familiar with the contents of the Handling Instructions to be able to offer appropriate guidance to the customer during sales promotion.

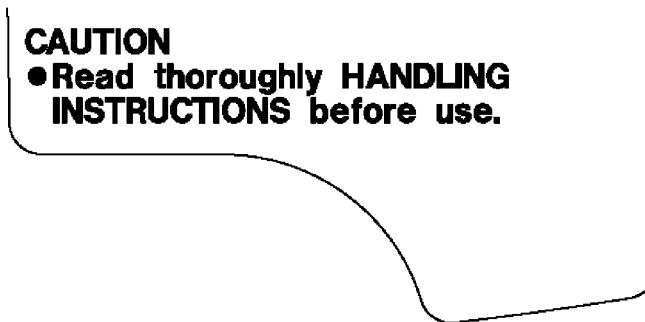
7-2. Name Plate

Each tool is provided with a Name Plate which lists the following basic safety precautions in the use of the tool.

(1) For the U.S.A. and Canada



(2) For Australia, New Zealand and South Africa



8. REFERENCE MATTERS

8-1. Collet Chuck

The collet chuck portion consists of a collet chuck and a collet nut. The collet chuck and the nut are assembled as a single unit to maintain desired dimensional accuracy. Therefore, when replacing the collet chuck portion, be sure to replace it entirely.

9. PRECAUTIONS IN DISASSEMBLY AND REASSEMBLY

The **[Bold]** numbers in the descriptions below correspond to the item numbers in the Parts Lists and exploded assembly diagram for the Model M 8V2. The **([Bold])** numbers in the descriptions below correspond to the item numbers in the Parts Lists and exploded assembly diagram for the Model M 8SA2. The disassembly and reassembly procedures described are the same for the Models M 8V2 and M 8SA2.

CAUTION: Prior to commencing disassembly, inspection or other maintenance, ensure without fail that the plug is disconnected from the power source.

9-1. Disassembly

(1) First, remove the bit. If further disassembly is attempted with the bit mounted on the router, it may cause damage to the cutting edges of the bit and/or serious injury to the handler.

(2) Removal of the Base [76] ([75]) (Fig. 3)

(a) Stand the router upright so that the bottom surface of the Base [76] ([75]) is directed downward.

(b) Lock Lever (A) [49] ([48]).

(c) With a 13-mm wrench, remove the Screw M8 [62] ([61]).

(d) Release Lever (A) [49] ([48]) and disassemble the Base [76] ([75]) from the main body. As the Springs [41] [42] ([40]) ([41]) are installed within the columns of the Base [76] ([75]), be sure to support the main body by firmly gripping the handle during disassembly.

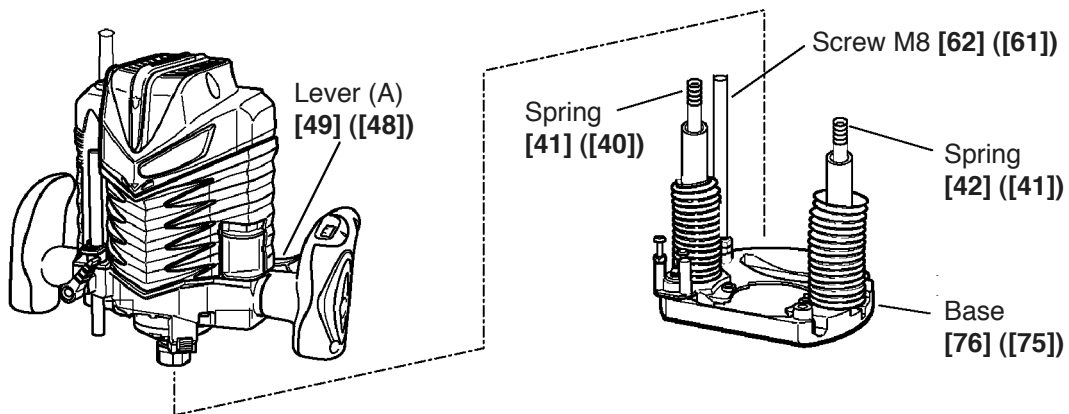


Fig. 3

(3) Removal of the Head Cover [9] ([7]) (Fig. 4)

Loosen and remove the three Tapping Screws (W/Flange) D4 x 25 (Black) [16] ([14]), and move the Head Cover [9] ([7]) toward the Cord [2] ([2]).

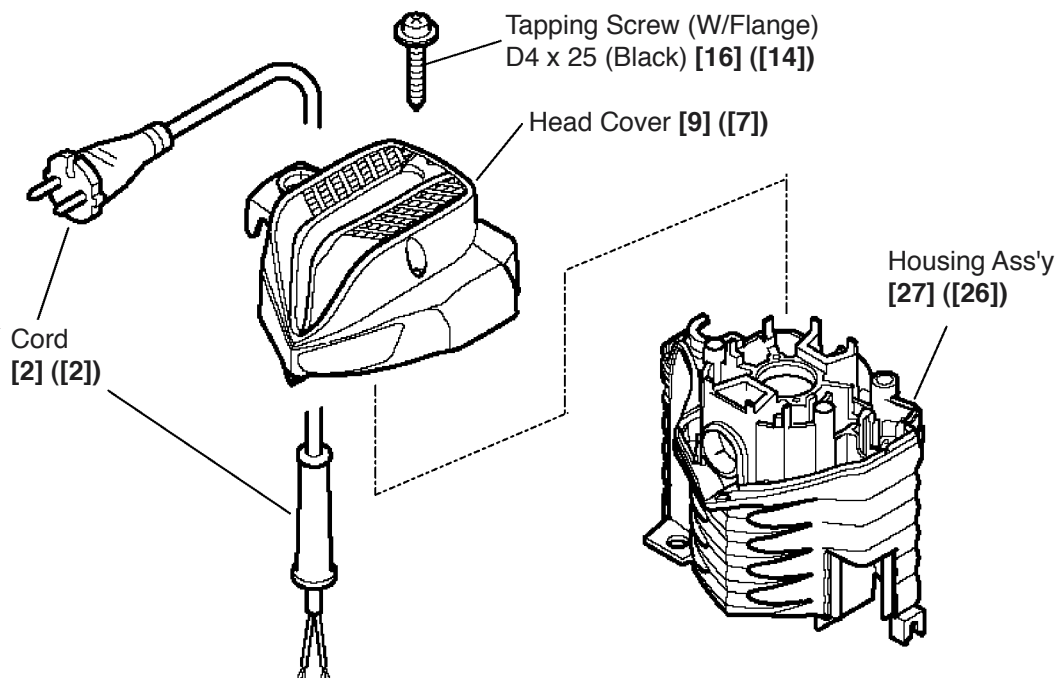


Fig. 4

- (4) Remove the Armature [34] ([33]) and the End Bracket [46] ([45]) (Fig. 5)
- Remove the Carbon Brushes (1 Pair) [25] ([23]).
 - Loosen and remove the two Tapping Screws (W/Flange) D4 x 16 (Black) [37] ([36]) and the Machine Screw (W/Washers) M6 x 30 (Black) [36] ([35]), and remove Handle (R) B [52] ([52]).
 - Disconnect Cord (A) [54] from the dial ass'y of the Controller Package [3], and remove Handle (R) A [51] ([50]). (Model M 8V2 only).
 - Loosen and remove the four Tapping Screws D5 x 50 [53] ([53]).
 - Being very careful to avoid hitting the Magnet [4] against the stator ass'y, remove the Armature [34] ([33]) and the End Bracket [46] ([45]) from the Housing Ass'y [27] ([26]). As the Magnet [4] is very fragile, it must be handled with the utmost caution (Model M 8V2 only).
 - Take out the Lock Piece [47] ([46]) which is mounted in the End Bracket [46] ([45]).
 - Being very careful not to damage the magnet component, fit a 14-mm wrench onto the hexagonal portion of the Magnet [4], and loosen and remove it from the Armature [34] ([33]) (Model M 8V2 only).
 - Loosen and remove the three Machine Screws (W/Washers) M4 x 12 (Black) [43] ([42]), remove the Bearing Cover [57] ([56]), Pushing Button [59] ([58]) and Lock Spring (A) [58] ([57]).
 - Being very careful not to damage the outer surface of its core, secure the Armature [34] ([33]) in a vise.
 - Turn the Thrust Nut [56] ([55]) counterclockwise with a wrench to loosen and remove it.
 - With a hand press, disassemble the Armature [34] ([33]) from the End Bracket [46] ([45]).

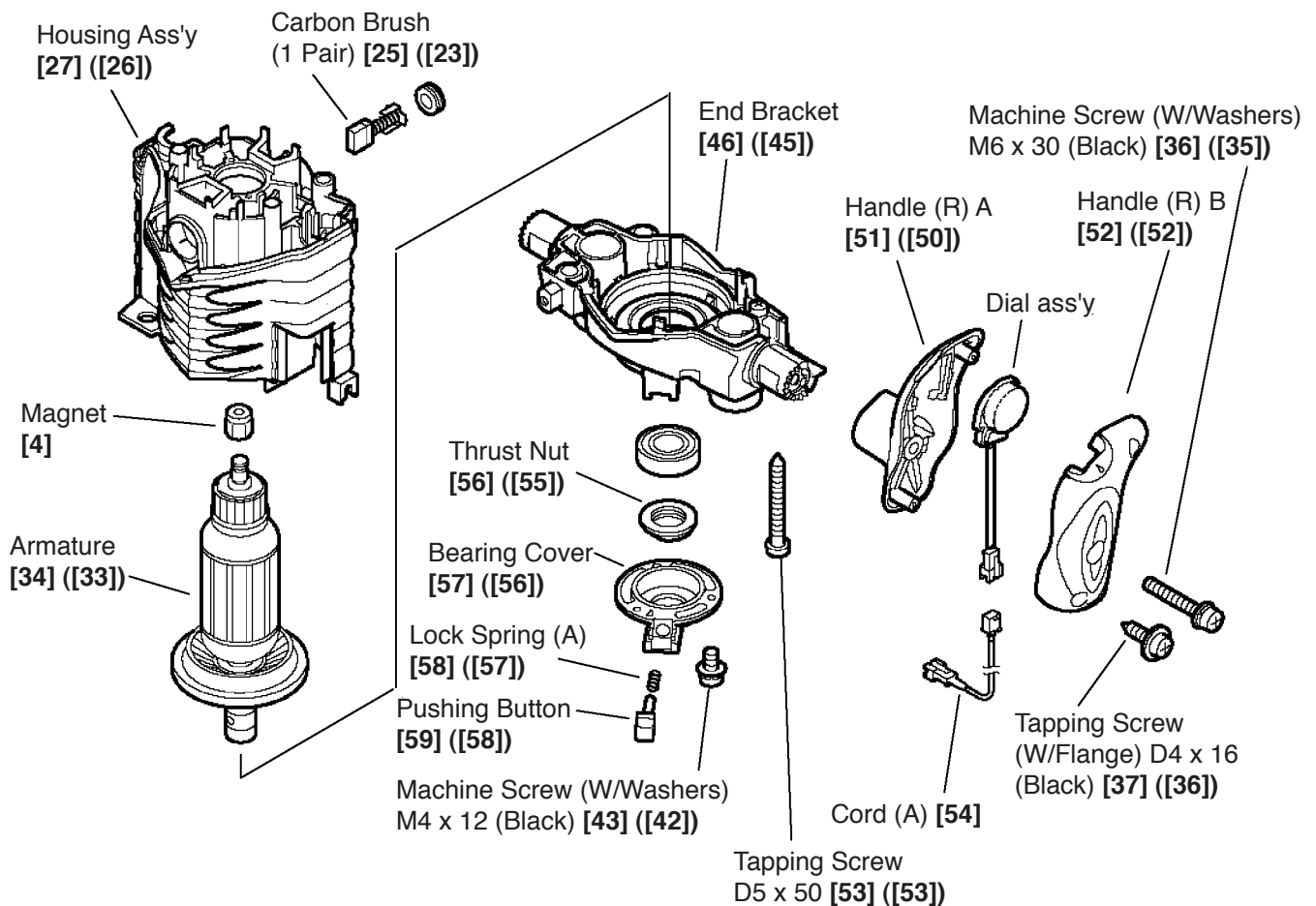


Fig. 5

(5) Remove the Stator Ass'y [31] ([30]) (Fig. 6)

- (a) Remove the Controller Package [3]. (Model M 8V2 only)
- (b) Loosen and remove the two Tapping Screws D4 x 12 [5] ([3]), and remove the Bearing Bushing [6] ([4]).
- (c) Disconnect the Brush Terminals [32] ([31]) of the Stator Ass'y [31] ([30]) from the brush holders.
- (d) Lift out the Switch (1P Solder Type) [23] ([21]) from the Housing Ass'y [27] ([26]).
- (e) Disconnect the Connectors [11] ([9]) in which the lead wires of the Stator Ass'y [31] ([30]) are connected and remove the screw on the terminal of the switch.
- (f) Loosen and remove the two Hex. Hd. Tapping Screws D5 x 65 [33] ([32]).
- (g) With a plastic hammer, gently tap on the lower end of the Housing Ass'y [27] ([26]) (the end where the End Bracket [46] ([45]) is connected) to loosen and separate the Stator Ass'y [31] ([30]) from the Housing Ass'y [27] ([26]).

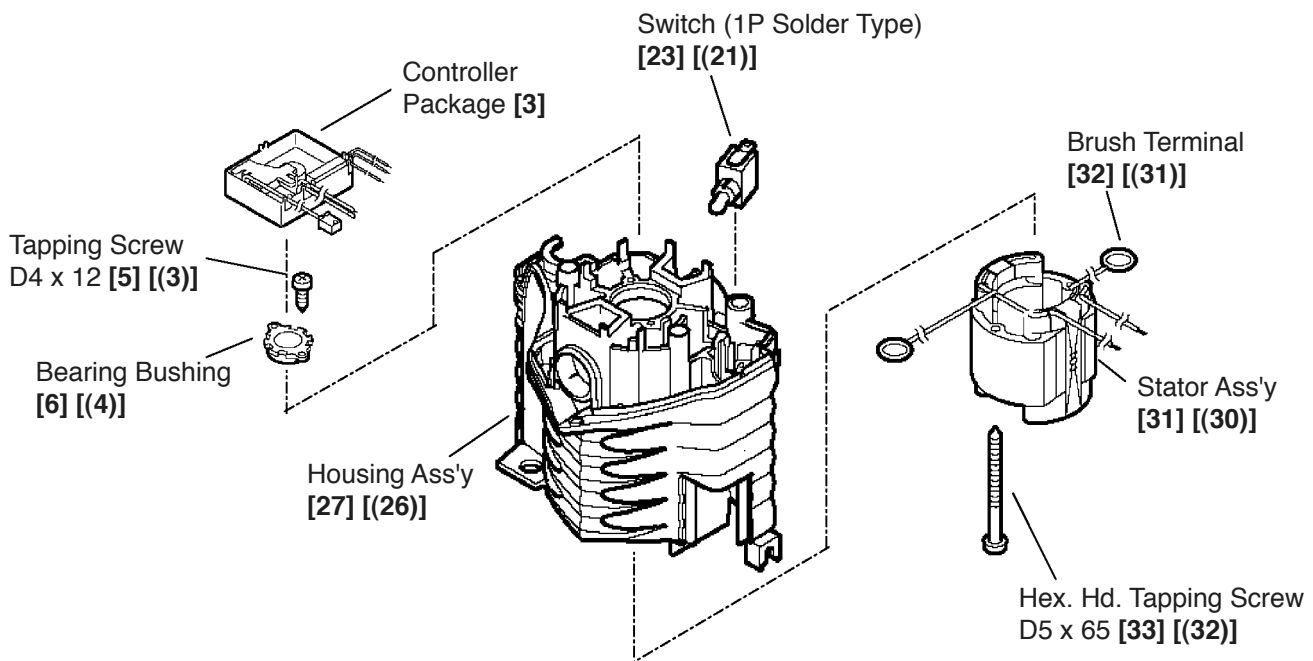


Fig. 6

(6) **CAUTION:**

As these models are specifically designed to ensure that the armature is dynamically balanced, there is extremely little allowable play or imbalance in comparison with other Hitachi electric power tools. For this reason, be sure to handle the armature and its associated parts very carefully during disassembly and reassembly.

9-2. Reassembly

Reassembly can be accomplished by following the disassembly procedures in reverse.

(1) Wiring procedure

During installation, be careful not to pinch the lead wires between the housing and the head cover.

(1-1) Model M 8V2

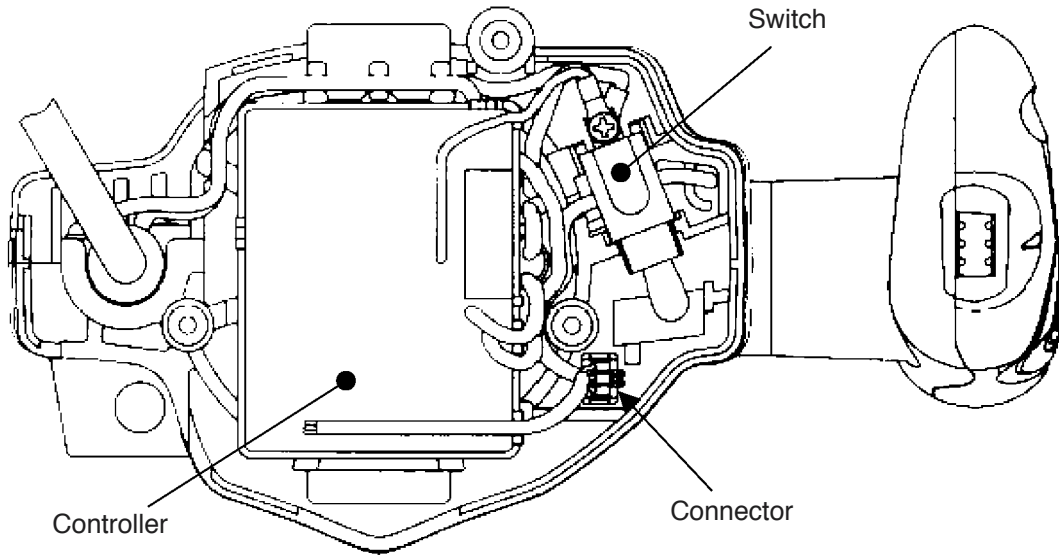


Fig. 7

(1-2) Model M 8SA2

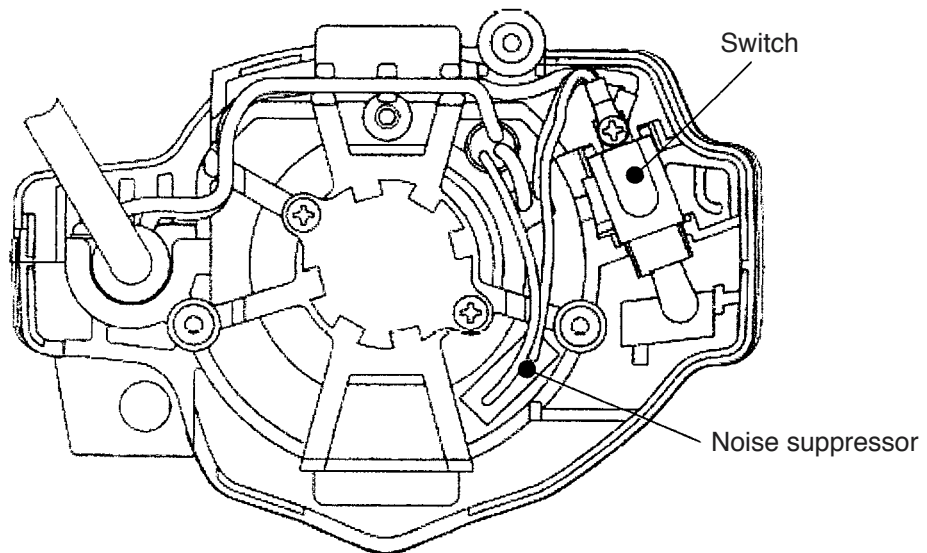


Fig. 8

(2) Wiring diagram

(2-1) Model M 8V2

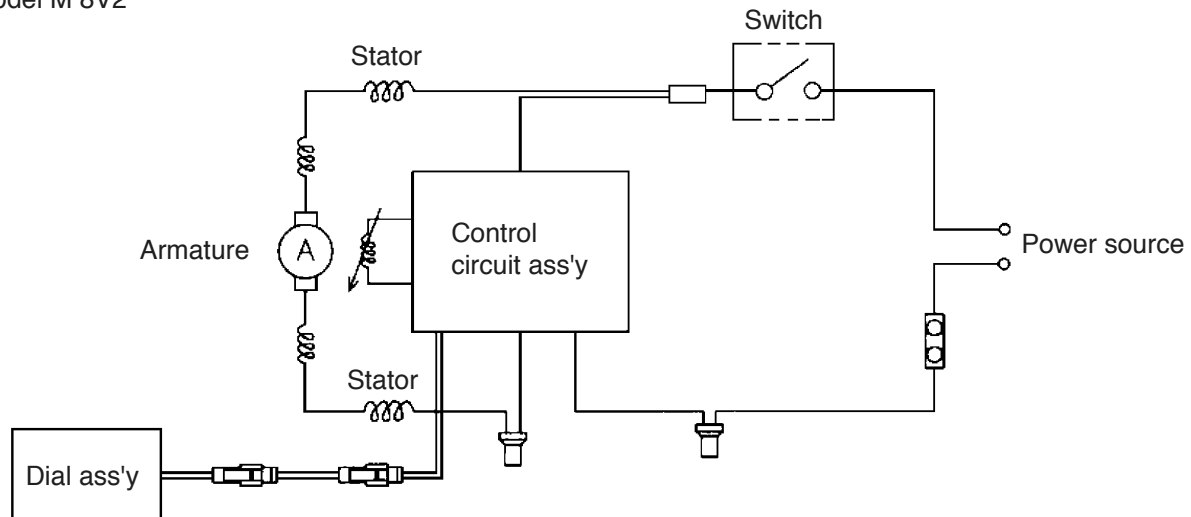


Fig. 9

(2-2) Model M 8SA2

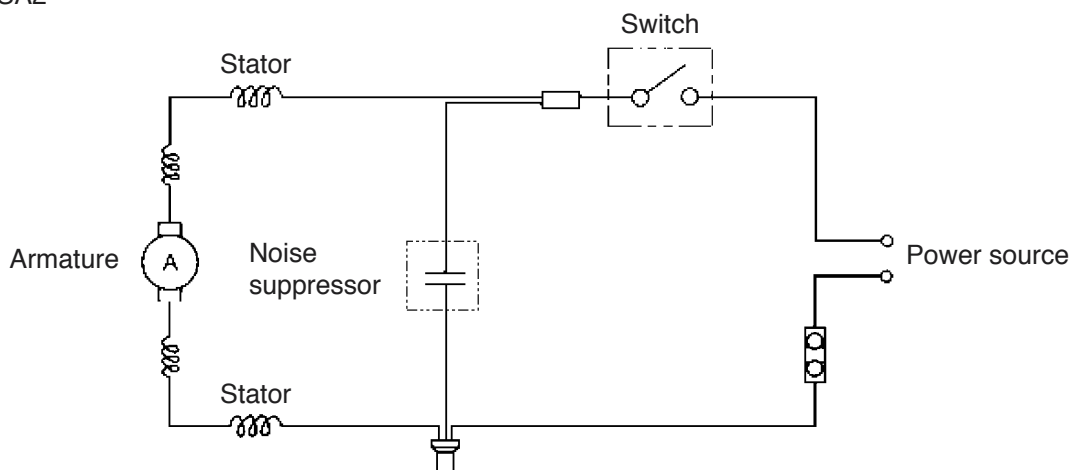


Fig. 10

(3) Tightening torque of screws and bolts

Tapping screw D4 x 12	2.0 ± 0.5 N·m (20 ± 5 kgf·cm)
Tapping screw D4 x 16	2.0 ± 0.5 N·m (20 ± 5 kgf·cm)
Tapping screw D4 x 25	2.0 ± 0.5 N·m (20 ± 5 kgf·cm)
Tapping screw D5 x 50	2.9 ± 0.5 N·m (30 ± 5 kgf·cm)
Hex. hd. tapping screws D5 x 65	2.9 ± 0.5 N·m (30 ± 5 kgf·cm)
Machine screw M4 x 8	1.8 ± 0.4 N·m (18 ± 4 kgf·cm)
Machine screw M4 x 12	1.8 ± 0.4 N·m (18 ± 4 kgf·cm)
Machine screw M6 x 10	4.9 ± 1.0 N·m (50 ± 10 kgf·cm)
Machine screw M6 x 30	4.9 ± 1.0 N·m (50 ± 10 kgf·cm)
Flat screw M5 x 14	3.4 ± 0.7 N·m (35 ± 7 kgf·cm)
Hex. socket set screw M5 x 8	0.75 ± 0.25 N·m (7 ± 2.5 kgf·cm)
Nut M5	3.4 ± 0.7 N·m (35 ± 7 kgf·cm)
Nut M8	9.8 ± 2.0 N·m (100 ± 20 kgf·cm)
Thrust nut	17.2 ± 2.5 N·m (50 ± 10 kgf·cm)

9-3. Insulation Tests

On completion of disassembly and repair, measure the insulation resistance and conduct the insulation tests (dielectric strength test).

Insulation resistance: 7 M Ω or more with DC 500 V megohm tester

Dielectric strength: AC 4,000 V/1 minute,
with no abnormalities 220 V — 240 V (and 110 V for U.K. products)
AC 2,500 V/1 minute,
with no abnormalities 100 V — 127 V (except U.K. products)

9-4. Cleaning the Cover

Clean the exterior of the tool with a soft cloth moistened with soapy water, and dry thoroughly.

9-5. No-load Current Value

After no-load operation for 30 minutes, the no-load current value should be as specified below at a frequency of 50/60 Hz.

Voltage (V)	110	120	230	240
Current (A) max. (Model M 8V2)	5.5	5.5	3.0	3.0
Current (A) max. (Model M 8SA2)	—	—	2.3	2.3

Note: For the Model M 8V2, check the no-load current value by setting the dial to "6".

9-6. Product Accuracy

Bit run out: With a 8-mm or 1/4" test bar applied, runout should be less than 0.4 mm at a 100-mm distance from the top of the chuck.

10. STANDARD REPAIR TIME (UNIT) SCHEDULES

MODEL	Variable		10	20	30	40	50	60 min.
	Fixed							
M 8V2 M 8SA2	General Assembly	Work Flow						

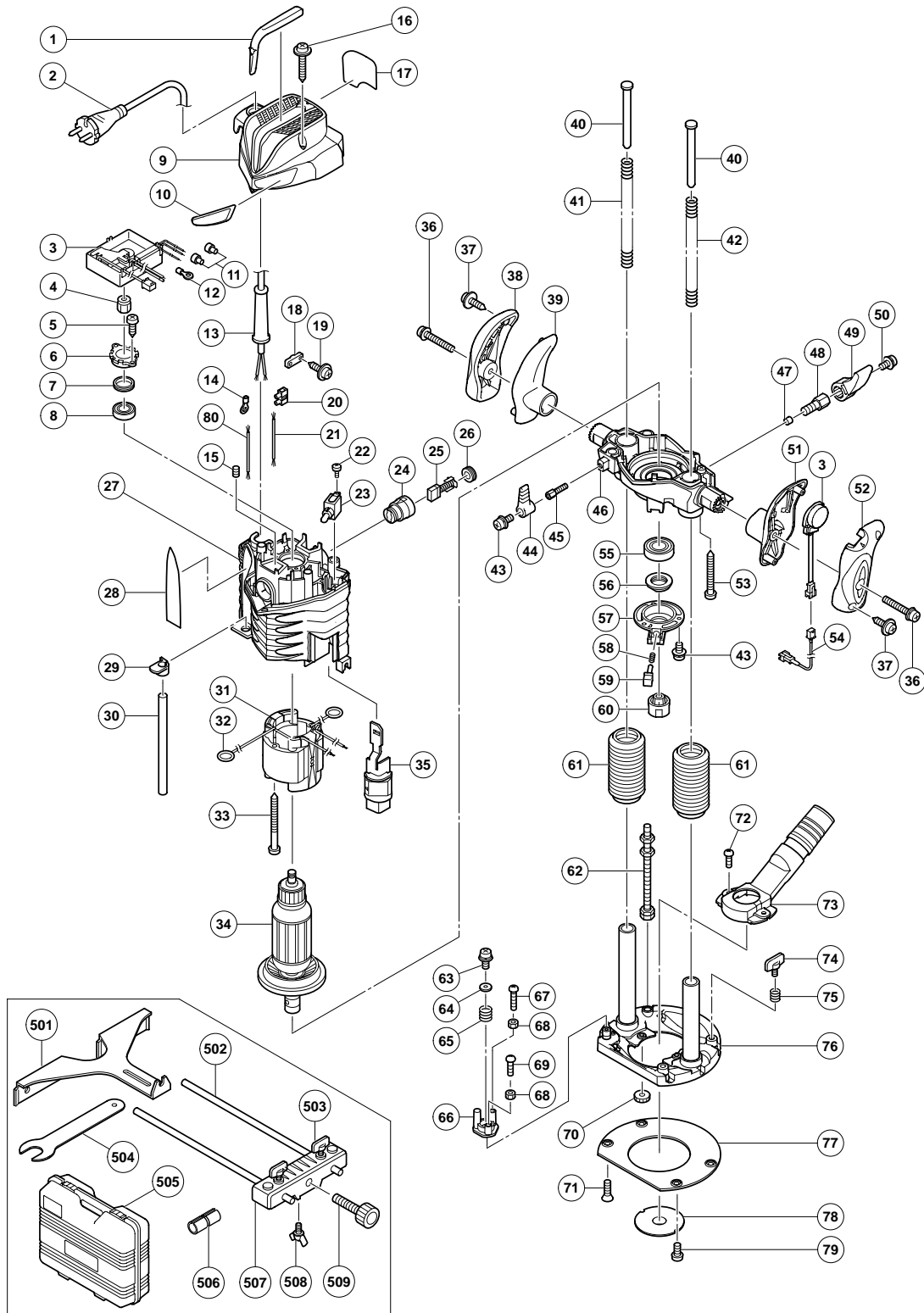
ELECTRIC TOOL PARTS LIST

ROUTER

2006 • 3 • 28

Model M 8V2

(E1)



PARTS

M 8V2

ITEM NO.	CODE NO.	DESCRIPTION	NO. USED	REMARKS	
1		HITACHI LABEL (B)	1		
* 2	500-234Z	CORD	1	(CORD ARMOR D8.8)	
* 2	500-247Z	CORD	1	(CORD ARMOR D8.8) FOR FIN, NOR, SWE, DEN, AUT	
* 2	500-241Z	CORD	1	(CORD ARMOR D8.8) FOR USA, CAN	
* 2	500-439Z	CORD	1	(CORD ARMOR D8.8) FOR NZL, AUS	
* 2	500-435Z	CORD	1	(CORD ARMOR D8.8) FOR GBR (230V)	
* 2	500-237Z	CORD	1	(CORD ARMOR D8.8) FOR GBR (110V)	
* 3	326-086	CONTROLLER PACKAGE 100V-120V	1		
* 3	326-092	CONTROLLER PACKAGE 230V-240V	1		
4	307-093	MAGNET	1		
5	954-017	TAPPING SCREW D4X12	2		
6	326-079	BEARING BUSHING	1		
7	323-420	RUBBER RING	1		
8	608-VVM	BALL BEARING 608VVC2PS2L	1		
9	326-085	HEAD COVER	1		
10		HITACHI LABEL (A)	1		
11	959-140	CONNECTOR 50091 (10 PCS.)	2		
12	930-804	TERMINAL M4.0 (10 PCS.)	1		
13	953-327	CORD ARMOR D8.8	1		
* 14	980-063	TERMINAL	1		
* 14	930-804	TERMINAL M4.0 (10 PCS.)	1	FOR USA, CAN	
15	938-477	HEX. SOCKET SET SCREW M5X8	2		
16	307-028	TAPPING SCREW (W/FLANGE) D4X25 (BLACK)	3		
17		NAME PLATE	1		
18	937-631	CORD CLIP	1		
19	984-750	TAPPING SCREW (W/FLANGE) D4X16	2		
* 20	938-307	PILLAR TERMINAL	1		
* 20	958-308Z	PILLAR TERMINAL (A)	1	FOR FIN, NOR, SWE, DEN, AUT	
* 21	326-177	INTERNAL WIRE (BLUE)	1		
* 21	326-178	INTERNAL WIRE (WHITE)	1	FOR USA, CAN	
* 21	326-180	INTERNAL WIRE (BLUE)	1	FOR GBR (110V)	
22	307-887	MACHINE SCREW (W/WASHER) M3.5X6	2		
23	314-603	SWITCH (1P SOLDER TYPE)	1		
24	981-586	BRUSH HOLDER	2		
25	999-043	CARBON BRUSH (1 PAIR)	2		
26	961-781	BRUSH CAP	2		
27	326-093	HOUSING ASS'Y	1	INCLUD. 15, 24	
* 28	326-090	SCALE	1		
* 28	326-094	SCALE	1	FOR NZL, AUS, GBR, USA, CAN	
29	326-084	MARKER	1		
30	325-196	STOPPER POLE (A)	1		
* 31	340-675C	STATOR ASS'Y 110V-120V	1	INCLUD. 32	
* 31	340-675E	STATOR ASS'Y 230V	1	INCLUD. 32	
* 31	340-675F	STATOR ASS'Y 240V	1	INCLUD. 32	
32	930-703	BRUSH TERMINAL	2		
33	960-251	HEX. HD. TAPPING SCREW D5X65	2		
* 34	360-773U	ARMATURE ASS'Y 110V-120V	1	INCLUD. 8, 55	
* 34	360-773E	ARMATURE 230V-240V	1		
35	326-083	LEVER	1		
36	307-443	MACHINE SCREW (W/WASHERS) M6X30 (BLACK)	2		
37	305-812	TAPPING SCREW (W/FLANGE) D4X16 (BLACK)	4		

PARTS

M 8V2

ITEM NO.	CODE NO.	DESCRIPTION	NO. USED	REMARKS	
38	325-220	HANDLE (L) B	1		
39	325-171	HANDLE (L) A	1		
40	325-180	SPRING GUIDE	2		
41	303-316	SPRING	1		
42	303-317	SPRING	1		
43	935-196	MACHINE SCREW (W/WASHERS) M4X12 (BLACK)	4		
44	325-174	LEVER (C)	1		
45	325-175	LOCK SCREW M6	1		
46	326-088	END BRACKET	1		
47	971-848	LOCK PIECE	1		
48	325-187	LOCK SCREW M10	1		
*	49	326-042	LEVER (A)	1	
*	49	322-601	LEVER (A) W/O STOPPER	1	FOR USA, CAN
	50	997-314	MACHINE SCREW (W/WASHERS) M6X10	1	
	51	325-172	HANDLE (R) A	1	
	52	325-962	HANDLE (R) B	1	
	53	307-100	TAPPING SCREW D5X50	4	
	54	325-202	CORD (A)	1	
	55	600-4T1	BALL BEARING 6004TIXVV	1	
	56	325-186	THRUST NUT	1	
	57	326-082	BEARING COVER	1	
	58	325-183	LOCK SPRING (A)	1	
	59	325-182	PUSHING BUTTON	1	
*	60	325-212	COLLET CHUCK 8MM	1	
*	60	323-293	COLLET CHUCK 1/4"	1	FOR NZL, AUS, GBR, USA, CAN
	61	325-207	BELLOWS (A)	2	
	62	302-315	SCREW M8	1	
	63	317-200	MACHINE SCREW (W/WASHERS) M4X8 (BLACK)	1	
	64	962-569	WASHER (B)	1	
	65	971-858	SPRING (A)	1	
	66	326-081	STOPPER BLOCK	1	
	67	302-316	MACHINE SCREW M5X25 (BLACK)	1	
	68	302-012	NUT M5 (BLACK)	2	
	69	302-317	MACHINE SCREW M5X16 (BLACK)	1	
*	70	997-467	KNOB NUT	2	FOR EUROPE, GBR, AUT
	71	992-013	SEAL LOCK FLAT HD. SCREW M5X14	4	
*	72	949-237	MACHINE SCREW M5X12 (10 PCS.)	2	FOR EUROPE, GBR, AUT
*	73	997-466	DUST COLLECTION ADAPTER SET	1	INCLUD. 70, 72 FOR EUROPE, GBR, AUT
	74	301-806	WING BOLT M6X15	2	
	75	947-859	LOCK SPRING	2	
	76	326-089	BASE	1	
	77	326-080	SUB BASE	1	
	78	956-790	TEMPLATE GUIDE D18	1	
	79	949-234	MACHINE SCREW M5X6 (10 PCS.)	2	
*	80	326-179	INTERNAL WIRE (BROWN)	1	FOR FIN, NOR, SWE, DEN, AUT

STANDARD ACCESSORIES

M 8V2

ITEM NO.	CODE NO.	DESCRIPTION	NO. USED	REMARKS	
501	956-797	STRAIGHT GUIDE	1		
502	971-622	GUIDE BAR	2		
503	301-806	WING BOLT M6X15	2		
504	323-295	WRENCH 23MM	1		
* 505	326-095	CASE	1	EXCEPT FOR AUT, USA, CAN	
* 506	971-852	CHUCK SLEEVE 8X6	1	FOR EUROPE, FIN, NOR, SWE, DEN	
507	326-091	BAR HOLDER	1		
508	949-394	WING BOLT M6X10 (10 PCS.)	1		
509	956-793	FEED SCREW	1		

OPTIONAL ACCESSORIES

ITEM NO.	CODE NO.	DESCRIPTION	NO. USED	REMARKS	
601	997-466	DUST COLLECTION ADAPTER SET	1	INCLUD. 602, 603	
602	997-467	KNOB NUT	2		
603	949-237	MACHINE SCREW M5X12 (10 PCS.)	2		
604	956-794	TRIMMER GUIDE	1		
605	318-304	ADJUSTING KNOB SET	1	INCLUD. 606-609	
606	318-350	SQUARE NUT	1		
607	317-300	SLEEVE	1		
608	956-046	WASHER (B)	1		
609	971-858	SPRING (A)	1		
* 610	956-808	STRAIGHT BIT (TCT) D8X8	1		
* 610	971-878	STRAIGHT BIT (TCT) D1/4"X1/4"	1	FOR NZL, AUS, GBR, USA, CAN	
* 611	956-756	TEMPLATE GUIDE ADAPTER	1	FOR USA, CAN	
* 612	323-298	TEMPLATE GUIDE D7.9	1	FOR USA, CAN	
* 613	323-299	TEMPLATE GUIDE D9.5	1	FOR USA, CAN	
* 614	323-300	TEMPLATE GUIDE D11.1	1	FOR USA, CAN	
* 615	323-301	TEMPLATE GUIDE D12.7	1	FOR USA, CAN	
* 616	323-302	TEMPLATE GUIDE D15.9	1	FOR USA, CAN	
* 617	323-303	TEMPLATE GUIDE D19.1	1	FOR USA, CAN	
* 618	323-304	TEMPLATE GUIDE D20.2	1	FOR USA, CAN	
619	303-347	TEMPLATE GUIDE D9.5	1		
620	303-348	TEMPLATE GUIDE D10	1		
621	303-349	TEMPLATE GUIDE D11.1	1		
622	303-350	TEMPLATE GUIDE D12	1		
623	303-351	TEMPLATE GUIDE D12.7	1		
624	303-352	TEMPLATE GUIDE D14	1		
625	303-353	TEMPLATE GUIDE D16	1		
626	303-354	TEMPLATE GUIDE D24	1		
627	303-355	TEMPLATE GUIDE D40	1		

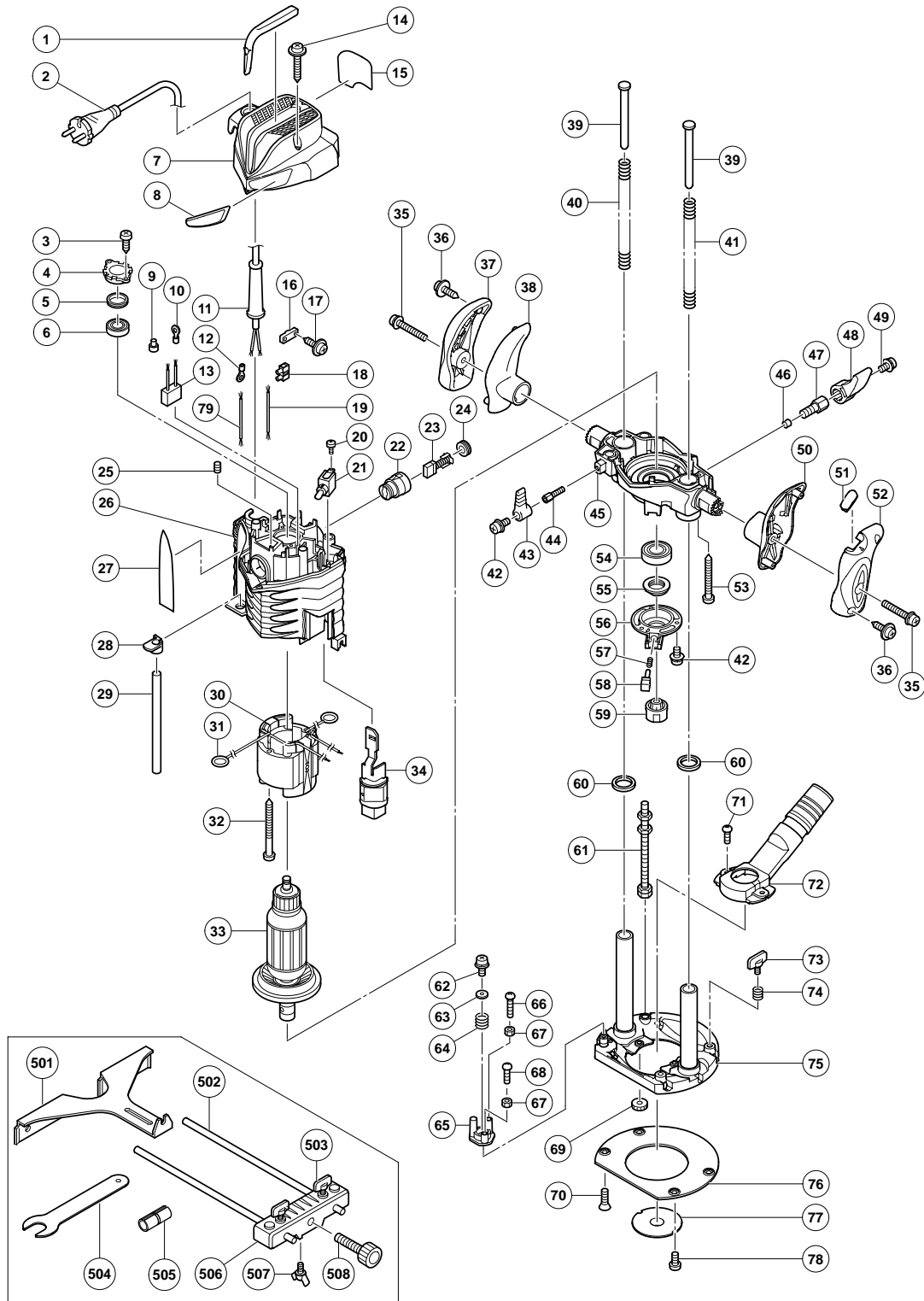
ELECTRIC TOOL PARTS LIST

ROUTER

2006 • 3 • 28

Model M 8SA2

(E1)



PARTS

M 8SA2

ITEM NO.	CODE NO.	DESCRIPTION	NO. USED	REMARKS	
		HITACHI LABEL (B)	1		
*	2	500-234Z CORD	1	(CORD ARMOR D8.8)	
*	2	500-247Z CORD	1	(CORD ARMOR D8.8) FOR AUT, FIN, DEN, SWE, NOR	
*	2	500-439Z CORD	1	(CORD ARMOR D8.8) FOR AUS, NZL	
*	2	500-447Z CORD	1	(CORD ARMOR D8.8) FOR SUI	
	3	954-017 TAPPING SCREW D4X12	2		
	4	326-096 BEARING BUSHING	1		
	5	323-420 RUBBER RING	1		
	6	608-VVM BALL BEARING 608VVC2PS2L	1		
	7	326-109 HEAD COVER	1		
	8	HITACHI LABEL (A)	1		
	9	959-141 CONNECTOR 50092 (10 PCS.)	1		
	10	930-804 TERMINAL M4.0 (10 PCS.)	1		
	11	953-327 CORD ARMOR D8.8	1		
*	12	980-063 TERMINAL	1	FOR CORD	
	13	930-039 NOISE SUPPRESSOR	1		
	14	307-028 TAPPING SCREW (W/FLANGE) D4X25 (BLACK)	3		
	15	NAME PLATE	1		
	16	937-631 CORD CLIP	1		
	17	984-750 TAPPING SCREW (W/FLANGE) D4X16	2		
*	18	938-307 PILLAR TERMINAL	1		
*	18	958-308Z PILLAR TERMINAL (A)	1	FOR AUT, FIN, DEN, SWE, NOR, SUI	
	19	326-177 INTERNAL WIRE (BLUE)	1		
	20	307-887 MACHINE SCREW (W/WASHER) M3.5X6	2		
	21	314-603 SWITCH (1P SOLDER TYPE)	1		
	22	981-586 BRUSH HOLDER	2		
	23	999-043 CARBON BRUSH (1 PAIR)	2		
	24	961-781 BRUSH CAP	2		
	25	938-477 HEX. SOCKET SET SCREW M5X8	2		
	26	326-093 HOUSING ASS'Y	1	INCLUD. 22, 25	
	27	326-090 SCALE	1	FOR EUROPE	
	27	326-094 SCALE	1	FOR NZL, AUS, SAF	
	28	326-084 MARKER	1		
	29	325-196 STOPPER POLE (A)	1		
*	30	340-677E STATOR ASS'Y 230V	1	INCLUD. 31	
*	30	340-677F STATOR ASS'Y 240V	1	INCLUD. 31	
	31	930-703 BRUSH TERMINAL	2		
	32	960-251 HEX. HD. TAPPING SCREW D5X65	2		
*	33	360-775E ARMATURE 230V	1		
*	33	360-775F ARMATURE 240V	1		
	34	326-083 LEVER	1		
	35	307-443 MACHINE SCREW (W/WASHERS) M6X30 (BLACK)	2		
	36	305-812 TAPPING SCREW (W/FLANGE) D4X16 (BLACK)	4		
	37	325-220 HANDLE (L) B	1		
	38	325-171 HANDLE (L) A	1		
	39	325-180 SPRING GUIDE	2		
	40	303-316 SPRING	1		
	41	303-317 SPRING	1		
	42	935-196 MACHINE SCREW (W/WASHERS) M4X12 (BLACK)	4		
	43	325-174 LEVER (C)	1		
	44	325-175 LOCK SCREW M6	1		

PARTS

M 8SA2

[illegible]

STANDARD ACCESSORIES

M 8SA2

ITEM NO.	CODE NO.	DESCRIPTION	NO. USED	REMARKS	
501	956-797	STRAIGHT GUIDE	1		
502	971-622	GUIDE BAR	2		
503	301-806	WING BOLT M6X15	2		
504	323-295	WRENCH 23MM	1		
505	971-852	CHUCK SLEEVE 8X6	1		
506	326-091	BAR HOLDER	1		
507	949-394	WING BOLT M6X10 (10 PCS.)	1		
508	956-793	FEED SCREW	1		

OPTIONAL ACCESSORIES

ITEM NO.	CODE NO.	DESCRIPTION	NO. USED	REMARKS	
* 601	971-878	STRAIGHT BIT (TCT) D1/4"X1/4"	1	FOR AUS, NZL, SAF	
* 602	956-808	STRAIGHT BIT (TCT) D8X8	1	EXCEPT FOR AUS, NZL, SAF	
* 603	323-293	COLLET CHUCK 1/4"	1	EXCEPT FOR AUS, NZL, SAF	
604	956-794	TRIMMER GUIDE	1		
605	997-466	DUST COLLECTION ADAPTER SET	1	INCLUD. 606, 607	
606	997-467	KNOB NUT	2		
607	949-237	MACHINE SCREW M5X12 (10 PCS.)	2		
608	318-304	ADJUSTING KNOB SET	1	INCLUD. 609-612	
609	318-350	SQUARE NUT	1		
610	317-300	SLEEVE	1		
611	956-046	WASHER (B)	1		
612	971-858	SPRING (A)	1		
613	303-347	TEMPLATE GUIDE D9.5	1		
614	303-348	TEMPLATE GUIDE D10	1		
615	303-349	TEMPLATE GUIDE D11.1	1		
616	303-350	TEMPLATE GUIDE D12	1		
617	303-351	TEMPLATE GUIDE D12.7	1		
618	303-352	TEMPLATE GUIDE D14	1		
619	303-353	TEMPLATE GUIDE D16	1		
620	303-354	TEMPLATE GUIDE D24	1		
621	303-355	TEMPLATE GUIDE D40	1		

