



MODELS

SB 10T/SB 10V

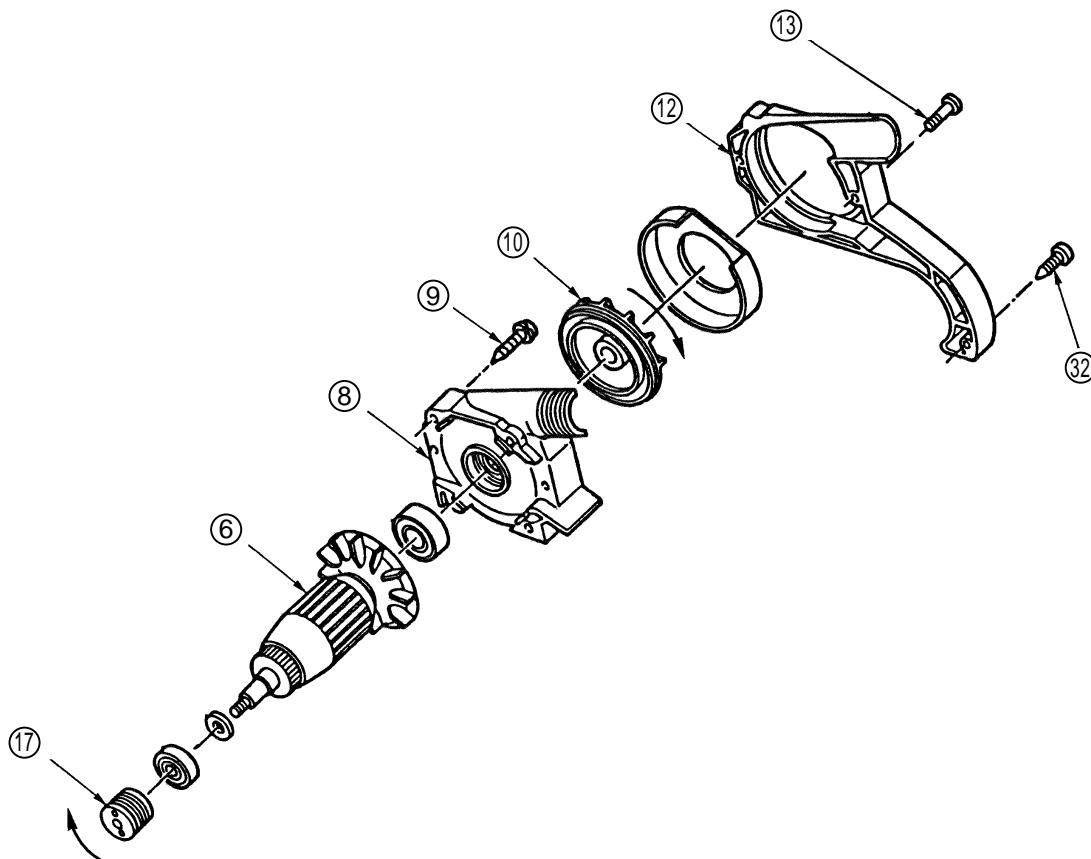
1. PRECAUTIONS IN DISASSEMBLY AND REASSEMBLY:

Prior to commencing disassembly, reassembly, sanding belt replacement or any other maintenance/inspection procedures, ensure without fail that the plug is disconnected from the power source outlet. With the exception of the components within the handle section, the component parts of the Models SB 10T and SB 10V are the same. Accordingly, the disassembly and reassembly procedures for the Model SB 10T described below are also applicable to the Model SB 10V. The circled numbers in the descriptions correspond to the item numbers in the Parts List and exploded assembly diagram for the Model SB 10T; please refer to the Parts List for the Model SB 10V for appropriate item numbers.

1-1. Disassembly:

(1) Disassembly of the Armature Ass'y (6) and Pulley (A) (17):

- A. Loosen the single D4 x 16 Tapping Screw (73), and remove the Belt Cover (59). The Belt (74) can then be taken off.
- B. Loosen the Brush Caps (49), and take out the Carbon Brushes (48).
- C. Loosen the D4 x 25 Tapping Screw (32) and the two M4 x 25 Machine Screws (13) which fix the Dust Cover (12), and take off the Dust Cover (12).
- D. Remove the four D5 x 30 Tapping Screws (9) (with Spring Lock Washers) which fix the Inner Cover (8). Then, tap gently on the Pulley (A) (17) end of the Armature (6) with a wooden or plastic hammer to loosen and remove the Armature (6) together with the Inner Cover (8) from the Housing Ass'y (18).
- E. Remove the Fan (10) by turning it counter-clockwise. The Armature (6) can then be removed from the Inner Cover (8).
- F. Remove Pulley (A) (17) by turning it clockwise.

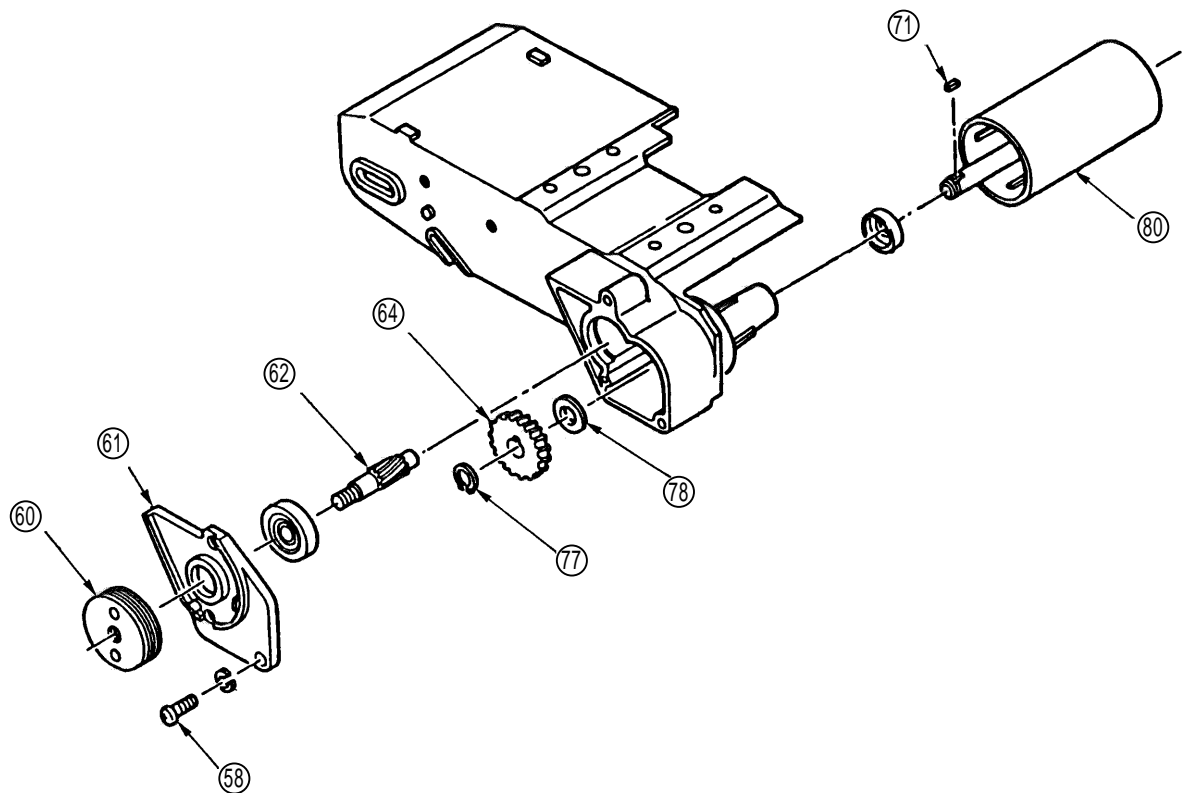


(2) Disassembly of the Stator Ass'y ②:

- A. After the Armature ⑥ has been disassembled, loosen the three D4 x 25 Tapping Screws ⑤① (with Washers), and take off the Handle Cover ②⑨.
- B. Disconnect the leadwires of the Stator Ass'y ② from Switch ②⑥ and the Connector ④⑦.
[NOTE] Cut the leadwire off as close as possible to the Connector ④⑦.
- C. Disconnect the Brush Terminals ① from the Brush Holders ④⑦, and loosen the two D5 x 55 Hexagon Hd. Tapping Screws ②③. Then, tap lightly on the end surface of the Housing Ass'y ①⑧ to loosen and remove the Stator Ass'y ②.

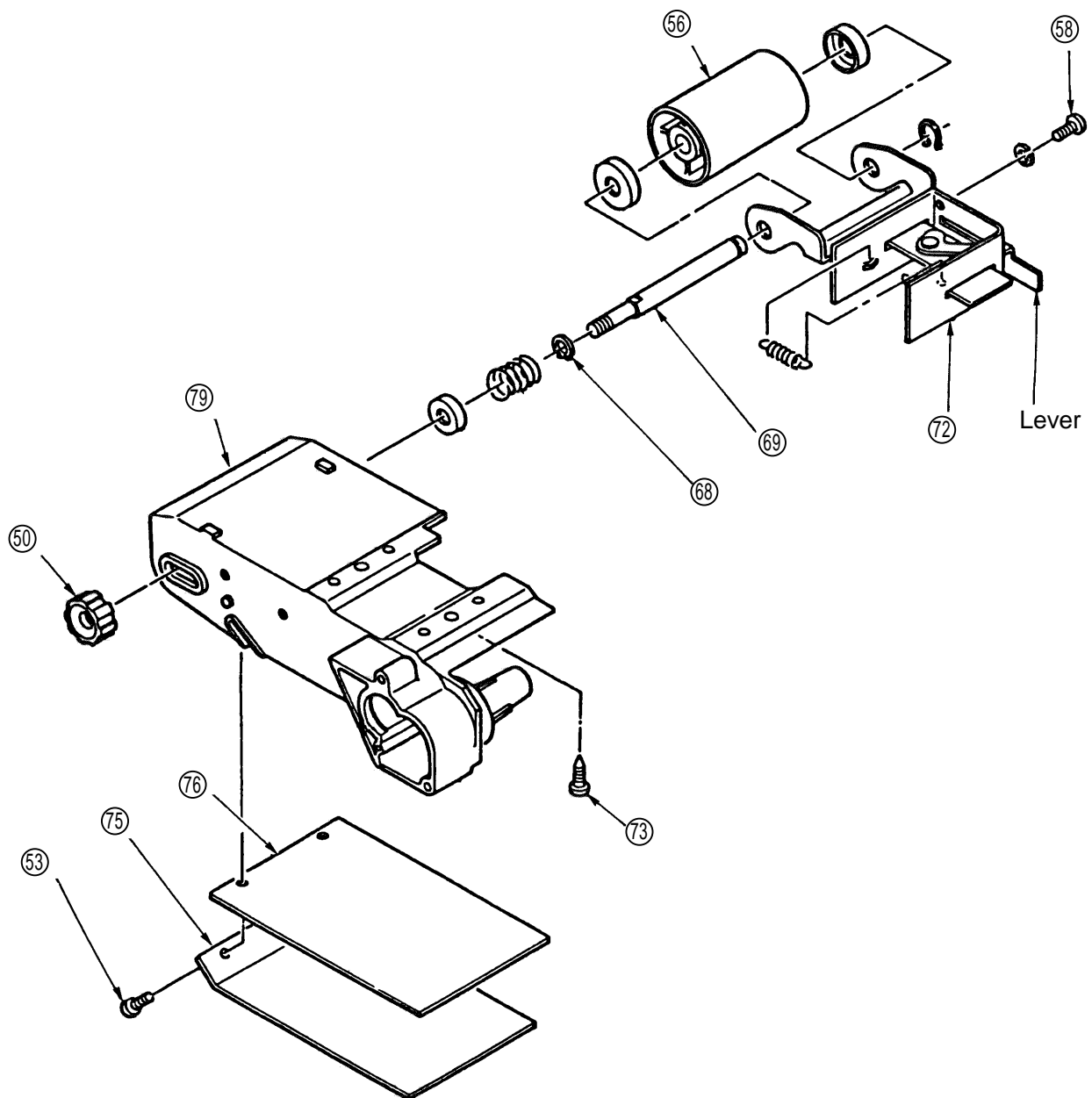
(3) Disassembly of the Pinion ⑥②, Pulley (B) ⑥⑦, Gear ⑥④, and Drive Pulley ⑧⑦:

- A. After the Belt Cover ⑤⑨ and Belt ⑦④ have been removed, loosen the three M4 x 14 Machine Screws ⑤⑧ and remove the Gear Cover ⑥① together with the Pinion ⑥② and Pulley (B) ⑥⑦.
- B. After wrapping the Pinion ⑥② with a soft rag to protect the pinion teeth from being damaged, secure the Pinion ⑥② in a vise. Then, turn Pulley (B) ⑥⑦ counter-clockwise to separate the Pinion ⑥②, Gear Cover ⑥① and Pulley (B) ⑥⑦.
- C. Remove the D10 C-Type Retaining Ring ⑦⑦ with stop ring pliers, and remove the Gear ⑥④. Finally, remove the 3 x 3 x 8 Feather Key ⑦① and Washer (B) ⑦⑧, and disassemble the Driver Pulley ⑧⑦.



(4) Disassembly of the Shaft (69), Idle Pulley Ass'y (56), and Housing Ass'y (18):

- A. Turn the lever of the Fork (72) forward to loosen and remove the Sanding Belt (501). Then return the lever to its original position.
- B. After removing the Knob Nut (50), loosen the two M4 x 14 Machine Screws (58). The Fork (72) can then be removed by pulling it outward.
- C. Remove the D12 C-Type Retaining Ring (68) with stop ring pliers, and take out the Shaft (69). The Idle Pulley Ass'y (56) can then be removed.
- D. Loosen the two M4 x 10 Machine Screws (53), and remove the Shoe Plate (75) and Shoe Cushion (76). Then, loosen the four D4 x 16 Tapping Screws (73), and separate the Housing Ass'y (18) and Body Ass'y (79).

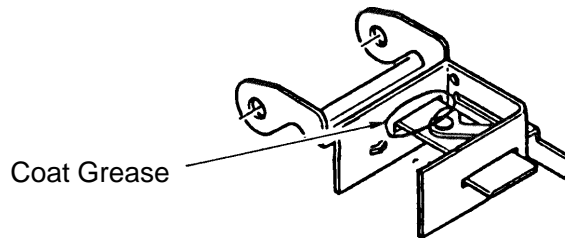


1-2. Reassembly:

Reassembly can be accomplished by following the disassembly procedures in reverse.

1-3. Lubrication:

- (1) Apply 30 grams of grease (Hitachi Motor Grease No. 29, Code No. 930035, is recommended) within the gear chamber of the Body Ass'y (79).
- (2) Liberally coat grease (Hitachi Motor Grease No. 29) on the sliding and pivoting portions of the lever on the Fork (72), as illustrated below.



- (3) Apply a few drops of spindle oil to the felt portions between the D10 x D14 x 12 Metals (65) in the Body Ass'y (79), and to the felt packings of the Metals (55) at either side of the Idle Pulley Ass'y (56).

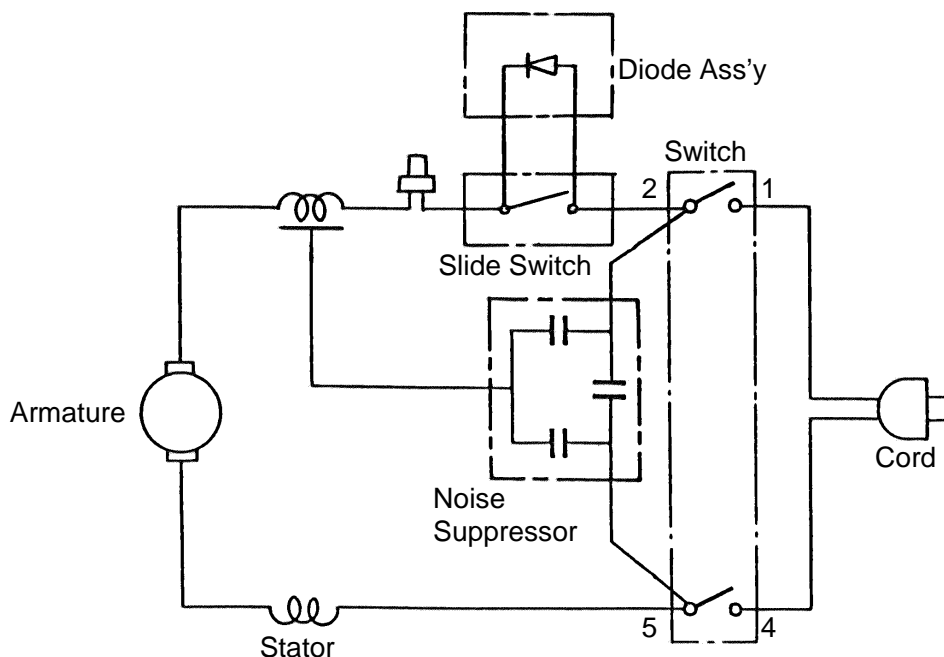
1-4. Screw Tightening Torques:

- | | |
|----------------------------|--------------------------------|
| (1) D4 Tapping Screws..... | 15 - 25 kgf-cm (13 - 22 lb-in) |
| (2) D5 Tapping Screws..... | 25 - 35 kgf-cm (22 - 30 lb-in) |

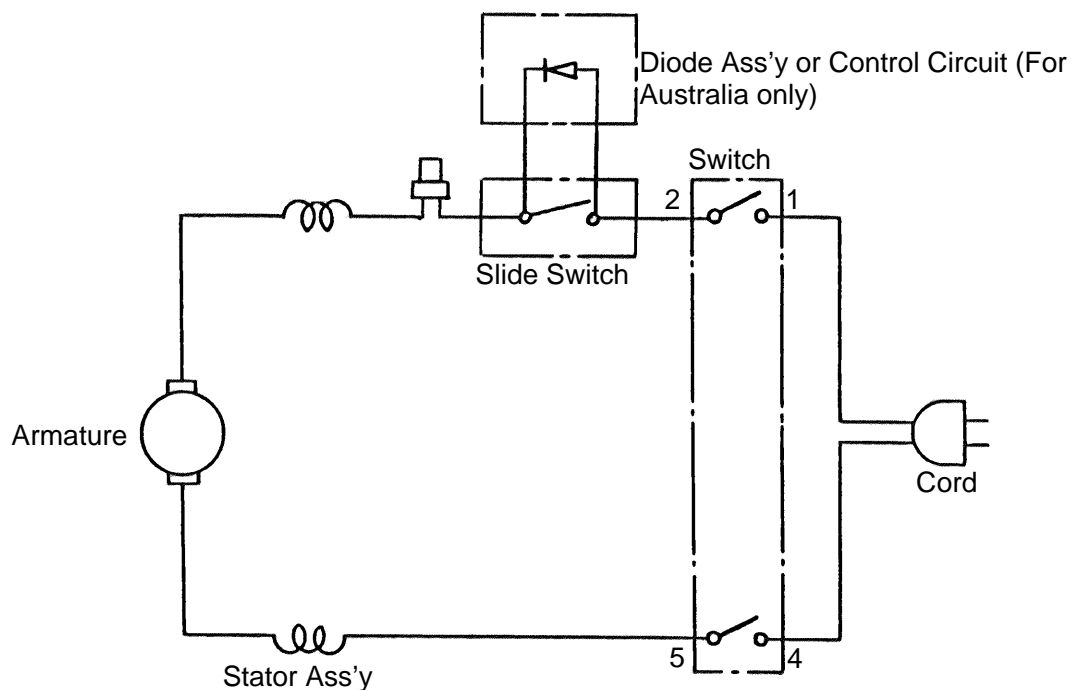
1-5. Wiring Diagram:

- (1) Model SB 10T

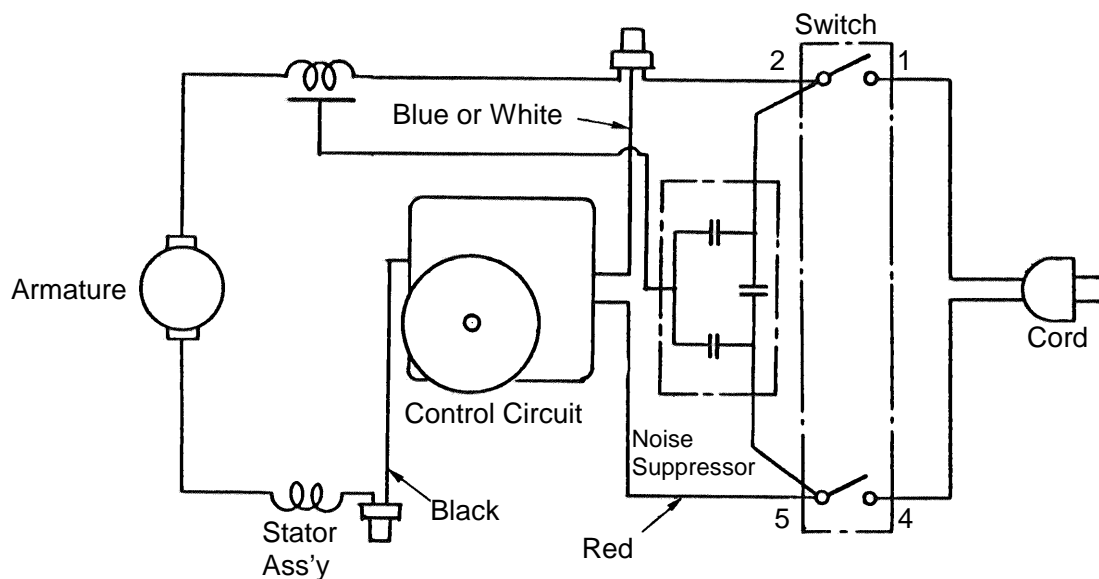
A. For European countries, South Africa and New Zealand.



B. For other countries.



(2) Model SB 10V



1-6. Insulation Tests:

On completion of disassembly and repair, measure the insulation resistance and conduct dielectric strength test.

Insulation Resistance: 7MΩ or more with DC500V Megohm Tester.

Dielectric Strength: AC4000V/1 minute, with no abnormalities..... 220 V - 240 V (and 110 V for U.K. products)
AC2500V/1 minute, with no abnormalities..... 110 V - 127 V (except U.K. products)