

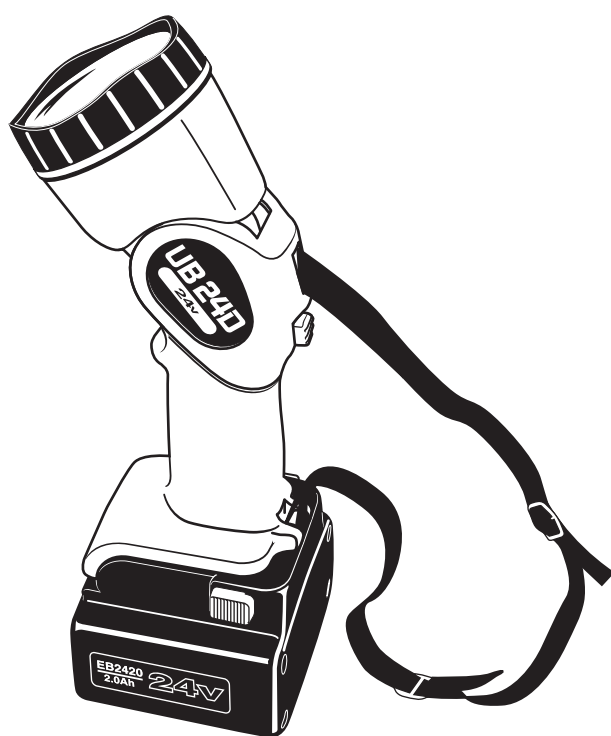
MODEL

**UB 24D**

**HITACHI**  
**POWER TOOLS**

**TORCHLIGHT/FLASHLIGHT**  
**UB 24D**

**TECHNICAL DATA**  
**AND**  
**SERVICE MANUAL**



LIST No. F866

Dec. 2001



## CONTENTS

	Page
<b>1. PRODUCT NAME .....</b>	<b>1</b>
<b>2. MARKETING OBJECTIVE .....</b>	<b>1</b>
<b>3. APPLICATIONS .....</b>	<b>1</b>
<b>4. SELLING POINTS .....</b>	<b>1</b>
4-1. Selling Point Descriptions .....	2
<b>5. SPECIFICATION COMPARISONS WITH SIMILAR PRODUCT .....</b>	<b>2</b>
<b>6. PRECAUTIONS IN SALES PROMOTION (SAFETY INSTRUCTIONS) .....</b>	<b>3</b>
<b>7. REPLACEMENT OF BULB AND LENS.....</b>	<b>3</b>
7-1. Replacement of Bulb.....	4
7-2. Replacement of Lens .....	4
<b>8. SPARE PARTS .....</b>	<b>4</b>
<b>9. PRECAUTIONS IN DISASSEMBLY .....</b>	<b>5</b>
Assembly Diagram for UB 24D	

## 1. PRODUCT NAME

Hitachi Cordless Torchlight (Flashlight), Model UB 24D

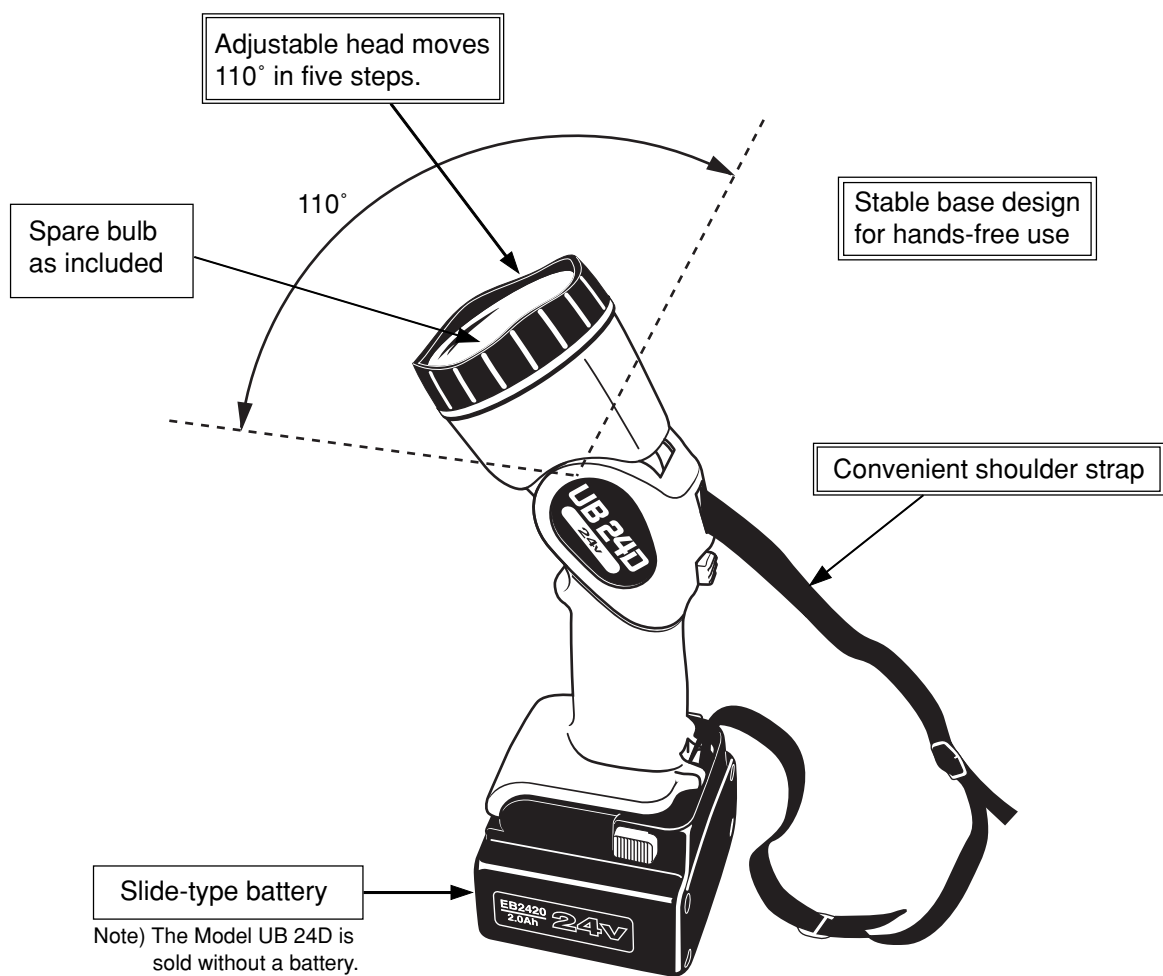
## 2. MARKETING OBJECTIVE

The Model UB 24D is the new 24-V torchlight/flashlight powered by the new slide-type batteries. By putting the Model UB 24D on the market, we aim to expand the market share of Hitachi cordless power tools and batteries.

## 3. APPLICATIONS

For outdoor use, construction work, etc.

## 4. SELLING POINTS



## 4-1. Selling Point Descriptions

### 4-1-1. Adjustable head up to 110° in five steps

The head can be adjusted up to 110° in five steps (0°, 30°, 60°, 90° and 110°).

### 4-1-2. Convenient shoulder strap

The Model UB 24D is suitable for long-term use thanks to the convenient shoulder strap.

### 4-1-3. Approx. 3-hour continuous operating time (using a fully charged EB 2420 battery)

Battery	EB 2420 (2.0 Ah)	EB 2430HA (3.0 Ah)
Continuous operating time	Approx. 3 hours	Approx. 4.5 hours

(1) Continuous operating time means the lighting time using a fully charged battery, and varies in accordance with the frequency of use, battery capacity and other factors.

Accordingly, the above values are intended for reference purposes only.

## 5. SPECIFICATION COMPARISONS WITH SIMILAR PRODUCT

Item	Model	HITACHI UB 24D	B
	Unit		
Battery	—	EB 2420, EB 2430HA	BAT 030
Bulb	—	24 V, 0.5 A	24 V, 0.45 A
Continuous operating time	—	Approx. 3 hours (using fully charged 2.0 Ah EB 2420 battery)	Approx. 3 hours (using fully charged 2.0 Ah BAT 030 battery)
Illumination	Lx	7000	Not indicated
Adjustable angle	°	0 — 110 (in five steps)	0 — 90 (2-position pivoting head)
Dimensions (without battery)	mm	85 in diameter x 261 in length 3-11/32" x 10-1/4"	77 in diameter x 237 in length 3" x 9-11/32"
Weight	kg	0.34 (0.75 lbs.) (without shoulder strap)	0.37 (0.82 lbs.)

## 6. PRECAUTIONS IN SALES PROMOTION (SAFETY INSTRUCTIONS)

In the interest of promoting the safest and most efficient use of the Model UB 24D Torchlight (Flashlight) by all of our customers, it is very important that at the time of sale the salesperson carefully ensures that the buyer seriously recognizes the importance of the contents of the Handling Instructions (printed on the carton box), and fully understands the precautions.

- Handling Instructions

Salespersons must be thoroughly familiar with the contents of the Handling Instructions in order to give pertinent advice to the customer.

(1) Do not look directly at the light while it is turned on.

Do not shine the light directly at another person's face.

(2) Do not open the front cover immediately after using the light.

The bulb is extremely hot immediately after using the light. Wait until the bulb has cooled down before replacing the bulb.

(3) Always turn the switch off before replacing the bulb or when not in use.

Otherwise, the service life of the bulb can be shortened and a short circuit may result.

If the light is left for a long time with the switch turned on and the battery installed, the service life of the battery can also be shortened.

(4) Do not use the light in the rain.

The Model UB 24D is not water-resistant and may fail if it gets wet.

(5) Do not shock or disassemble the light.

Otherwise, inside soldering can fall off or the bulb can be broken.

(6) Do not allow the light to contact gasoline, thinner, etc.

The outer case of the Model UB 24D can be damaged by gasoline, thinner, etc. although it is made of strong synthetic resin.

(7) Do not leave the Model UB 24D in very hot locations exceeding 60 °C such as the inside of a car in summer.

Storage in such locations can cause a failure.

- Others

Store the Model UB 24D in a dry place at a temperature less than 40 °C. Remove the battery from the light before storage.

## **7. REPLACEMENT OF BULB AND LENS**

Turn the switch off and remove the battery before replacing the bulb or the lens.

### **7-1. Replacement of Bulb**

- (1) Remove the front cover by turning it counterclockwise.
- (2) A spare bulb is stored in the head. Replace the expired bulb with a new one and reinstall the front cover.

### **7-2. Replacement of Lens**

Remove the front cover and then the reflector. The lens can then be removed.

Replace the lens with a new one and reinstall the removed parts.

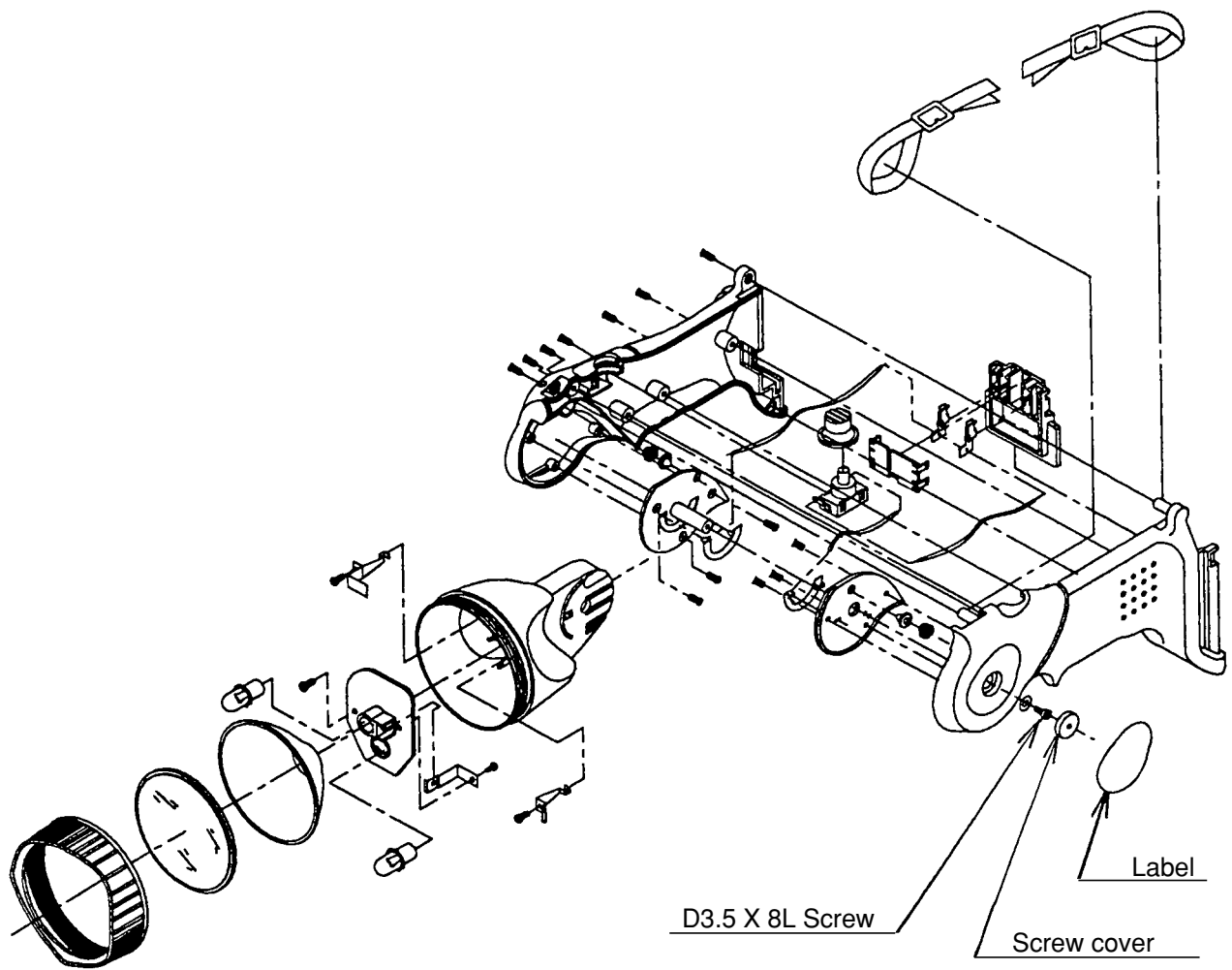
## **8. SPARE PARTS**

The spare parts for the Model UB 24D are as follows.

- (1) Bulb (for Model UB 24D)
- (2) Lens

## 9. PRECAUTIONS IN DISASSEMBLY

Before disassembling the Model UB 24D for investigation, peel off the label and remove the screw cover and the D3.5 X 8L screw.



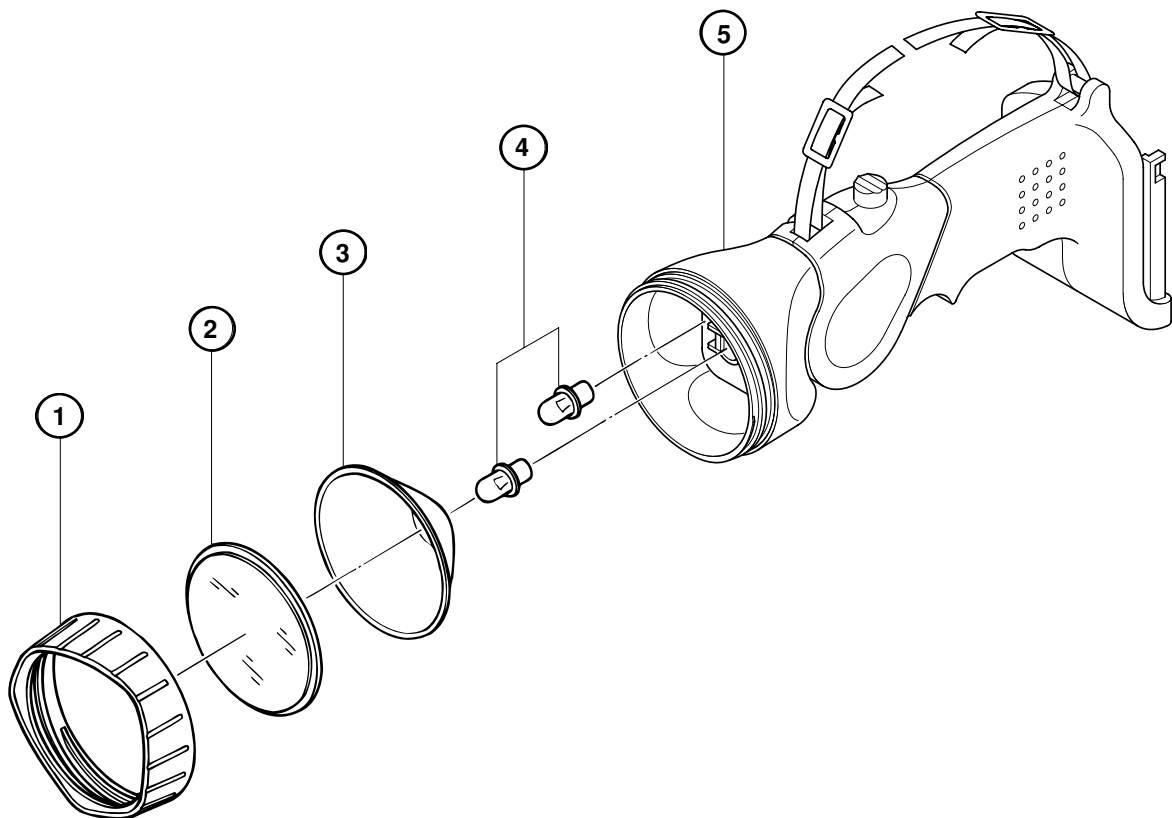
## ELECTRIC TOOL PARTS LIST

### ■ CORDLESS TORCHLIGHT

2001・12・25

Model UB 24D

(E1)





## PARTS

UB 24D

[illegible]

