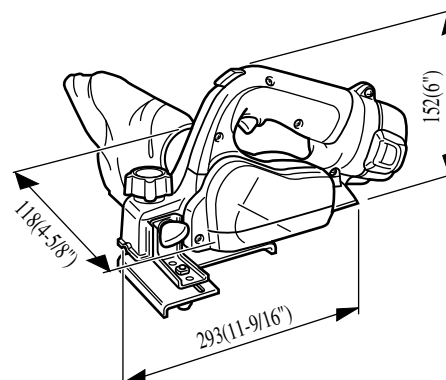


**For Models** ▶ 1050D

**Description** ▶ 12V Cordless

## CONCEPTION AND MAIN APPLICATIONS

	Battery	Fast charger	Plastic case
<b>1050DA</b>	1222	None	None
<b>1050DRA</b>	1222	DC1409	Equipped
<b>1050DWA</b>	1222	DC1411	Equipped



### ► Specifications

<b>No load speed</b>	9,000R/min
<b>Driving shank (LxWxH)</b>	Plane blade width 50mm [1-31/32"]
<b>Max. planing width</b>	50mm[1-31/32"]
<b>Max. planing depth</b>	0.5mm[0.02"]
<b>Shiplapping Max. depth</b>	15mm[9/16"]

### ► Standard equipment

Dust bag assembly...1 pc.  
 Guide Rule...1 pc.  
 Battery cover...1pc.  
 Hex. Wrench 4 ...1pc.  
 Set plate...1 pc.

### ► Optional accesories

Plane blade  
 Battery 1200, Battery 1202, Battery 1222, Battery 1220(for export only), Battery 1233,  
 Battery 1202A, Fast charger DC1411, Fast charger DC1409(for export only), Fast  
 charger DC1809(for domestic only), Charger DC1801(for export only), Fast charger  
 DC1412(for North America and Europe only)

Blade width 50mm

Light weight 2.1kg  
#1900B: 2.5kg

Workload per one full charge  
40m for 30mm width wood

50m or over is possible for 30mm width  
medium soft wood and for 2x4 lumber.

(with 0.5mm  
planing depth)

Shiplapping depth: 15mm

Disposable mini planer blades

Electric brake system

Dust bag (Standard accessory)

Enlighten your cleaning job  
after work.  
This can be  
replaced with dust catcher(#406).

Low noise 72dB

Safety Lock-off button

can be switched by  
either right or left hand.

Battery 1222

(2.0Ah) can be replaced  
easily with a push-button.

(For use of the existing battery,  
mount a set plate that is a  
standard option parts.)

Hex. Wrench

(for setting a plane blade)  
can be stored inside.

Guide Rule

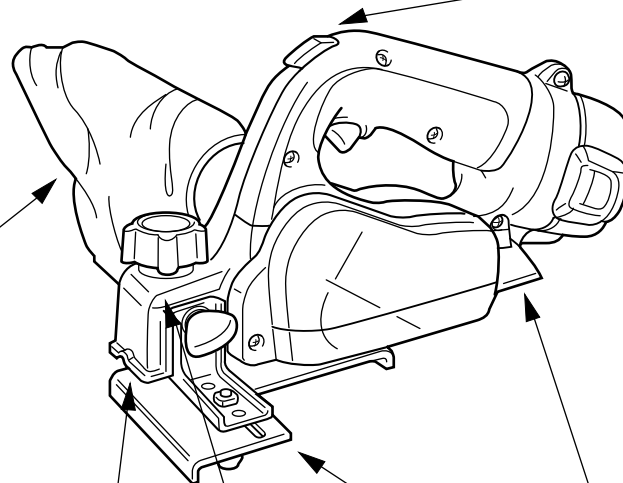
(standard accessory)  
can be mounted.

Max. planing depth: 0.5mm

Depth can be selected with  
0.1mm each by a click.

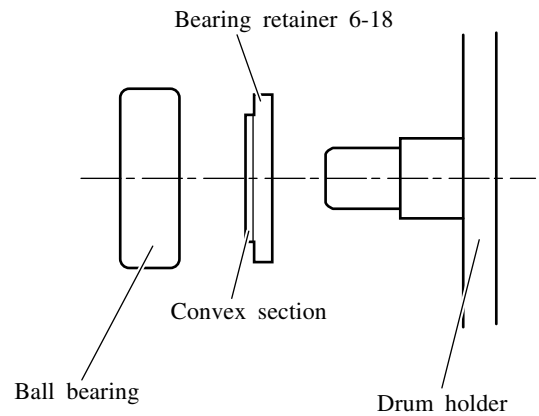
Chamfering function

V groove on the front base  
enables 0 to 5.6mm chamfering.

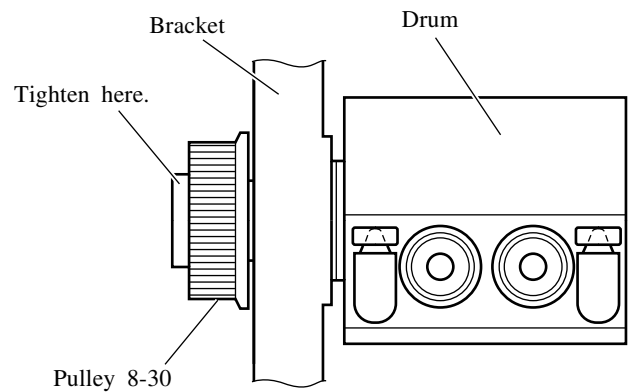


## ► Repair

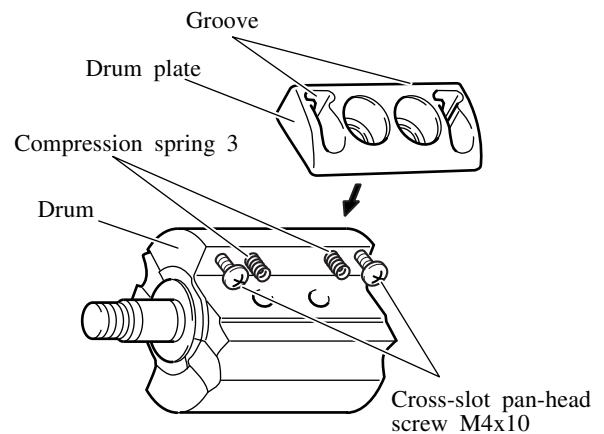
- (1) Mount bearing retainer 6-18 to drum holder together with ball bearing so that the convex part of the retainer should face ball bearing.



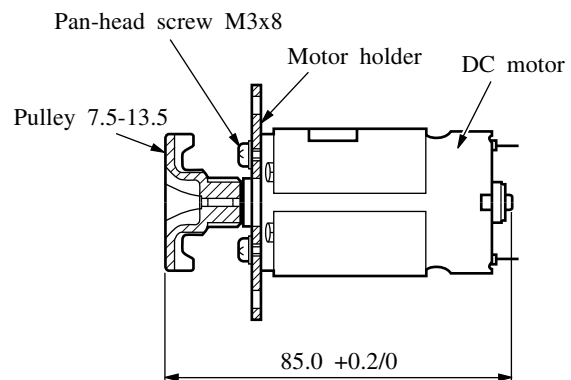
- (2) Tighten pulley 8-30 securely by using a wrench 17 or adjustable wrench, etc. as the motor has a brake function. (Note) Tightening torque is around 2.0Nm or over.



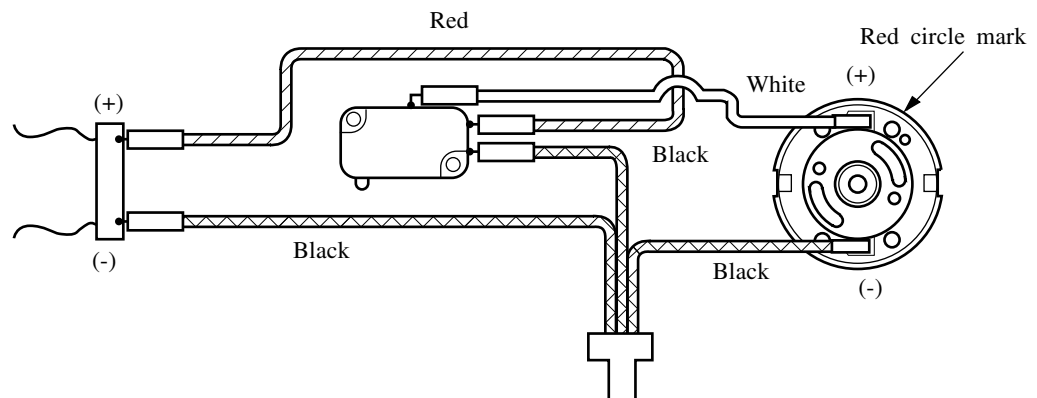
- (3) Insert compression springs 3 into drum holes before mounting a drum plate to the drum. For insertion, thread cross-slot pan-head screws (M4x10) about one turn and attach the drum plate so that the screw heads will set into the grooves on the drum plate.



- (4) Press pulley (7.5 to 13.5) into DC motor with the dimension as shown on the right figure.

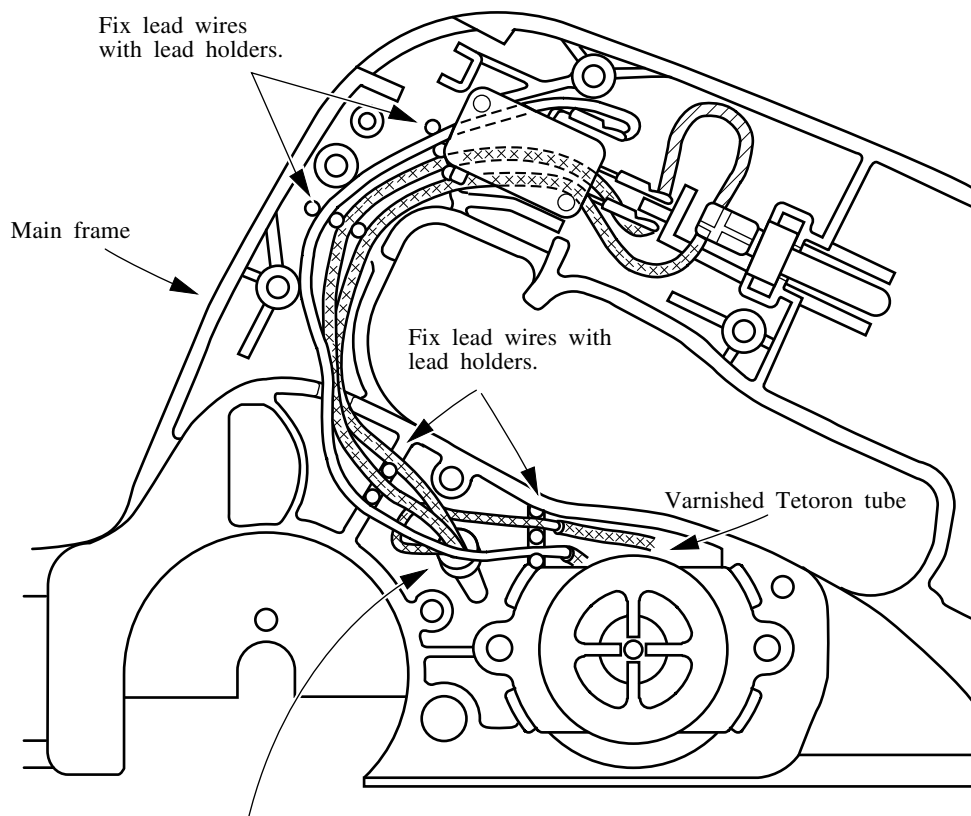


## ► Wiring diagram



## ► Connection diagram

Arrange lead wires in the main frame as shown below.



Treat connector end as shown in the figure.