

TECHNICAL INFORMATION

Makita

PRODUCT

P 1 / 4

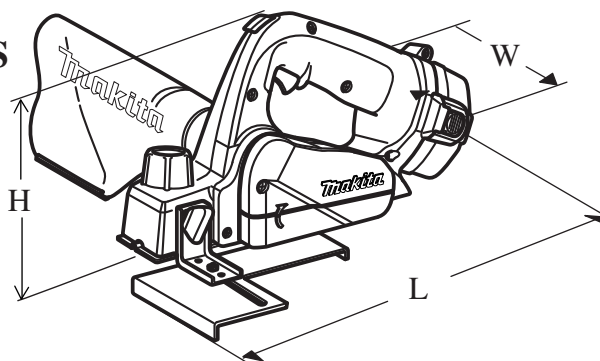
Models No. ► 1051D

Description ► 14.4V Cordless Planer

CONCEPTION AND MAIN APPLICATIONS

Model 1051D is the cordless power planer 50mm (14.4V) developed from our existing model 1050D(12V), having the same power as 1050D, but features longer run-time on one battery pack charge.

The variations of this model are as follows.



Dimensions : mm (")	
Width (W)	118 (4-5/8)
Height (H)	160 (6-5/16)
Length (L)	297 (11-11/16)

Model No.	Battery	Charger	Carrying Case
1051DZ	No	No	No
1051DWA	1422	DC1411	Yes
1051DWAE	1422 /2 pcs.	DC1411	Yes
1051DWD	1434	DC1411	Yes
1051DWDE	1434 /2 pcs.	DC1411	Yes

► Specification

Voltage	14.4V
No load speed (min-1=rpm)	9,000
Max. planing width	50mm[1-31/32"]
Max. planing depth	0.5mm[0.02"]
Shiplapping Max. depth	15mm[9/16"]
Net weight : Kg (lbs)	2.2 (4.8)

Charging time

Battery type No.	Charging time with charger DC1411	Charging time with charger DC1439	Charging time with charger DC1801	Charging time with charger DC1422
1420 (1.3 Ah Ni-Cd.)	Approx. 40 min.	Approx. 10 min.	Approx. 40 min.	Approx. 45 min.
1422 (2.0 Ah Ni-Cd.)	Approx. 60 min.	Approx. 16 min.	Approx. 60 min.	Approx. 70 min.
1434 (2.6 Ah Ni-MH.)	Approx. 75 min.	Approx. 25 min.	Approx. 75 min.	Approx. 85 min.
1435 (3.0 Ah Ni-MH.)	Approx. 90 min.	Approx. 30 min.	Approx. 90 min.	Approx. 100 min.

< Note > The above figures about charging time can be changeable depending on the conditions of batteries, outside temperature, etc..

► Standard equipment

- * Dust bag assembly 1 pc.
- * Rip fence 1 pc.
- * Battery cover 1 pc. for 1051DWA, 1051DWD
- * Battery cover 2 pcs. for 1051DWAE, 1051DWDE
- * Hex wrench 4 1 pc.

< Note > The standard equipment for the tool shown may differ from country to country.

► Optional accessories

- * TCT. mini planer blade 50mm
- * Battery 1420
- * Battery 1422
- * Battery 1434
- * Battery 1435
- * Charger DC1411
- * Fast charger DC1439
- * Charger DC1801
- * Automotive charger DC1422

20% more working than 12 V

Dust Bag (standard accessory)

Safety Lock-off Button
can be switched with
either hand.

14.4V Battery

Blade width 50mm

Shiplapping : 15mm

Max. planing depth: 0.5mm

Electric Brake System

Low Noise

Chamfering Function

V groove on the front base
enables 0 to 5.6mm chamfering.

Hex. Wrench
(for setting planer blades)
can be stored inside.

► **Comparison of products**

Specification	Model	Makita	
		1051D	1050D
Voltage (V)		14.4	12
Equipped motor		RS550VF-6532	RS550VF-7027
Planing width : mm (")		50 (1-31/32)	50 (1-31/32)
Max. planing depth : mm (")		0.5 (0.02)	0.5 (0.02)
Shiplapping depth: mm (")		15 (9/16)	15 (9/16)
No load speed : min-1= rpm		9,000	9,000
Net weight : kg (lbs)		2.2 (4.8)	2.1 (4.6)

< 1 > Assembling bearing retainer 6-18

Face the convex part of bearing retainer 6-18 to ball bearing 626LLB, and assemble it together with ball bearing 626LLB to drum holder as illustrated in Fig.1 and Fig. 1A.

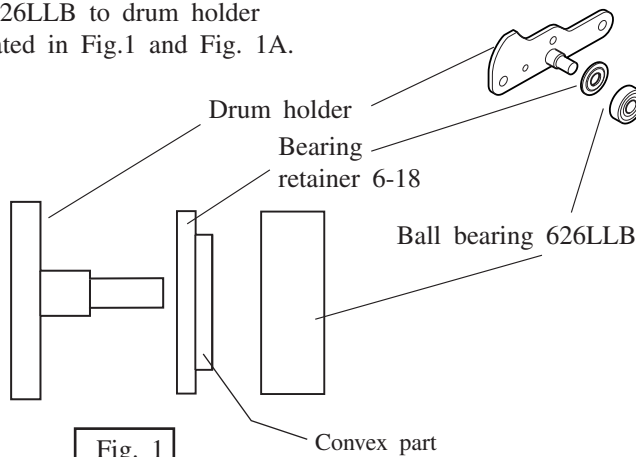


Fig. 1

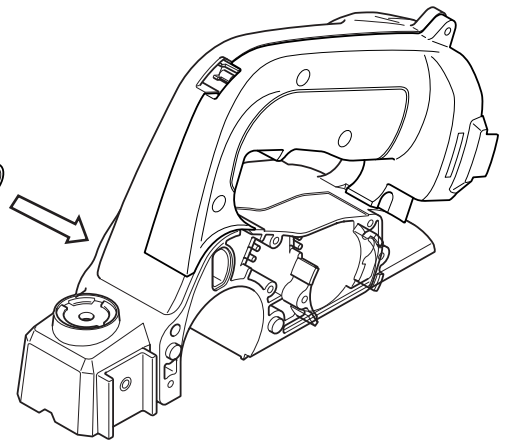


Fig.1A

< 2 > Assembling pulley 8-30

Pulley may be loosened by the frequent shock of electric brake, if it would be tightened not so firmly.

Tighten pulley with spanner 17 or with adjustable spanner firmly.

The fastening torque required is approx. over 2.0Nm.

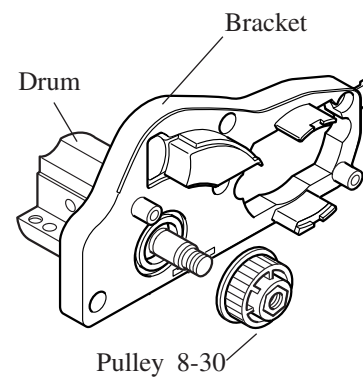


Fig. 2

< 3 > Assembling drum plate

Insert compression spring 3 into drum holes before assembling drum plate to the drum. Screw pan head screws M4 x 10 into drum about one turn, and attach the drum plate so that the screw heads will be set into the grooves on the drum plate.

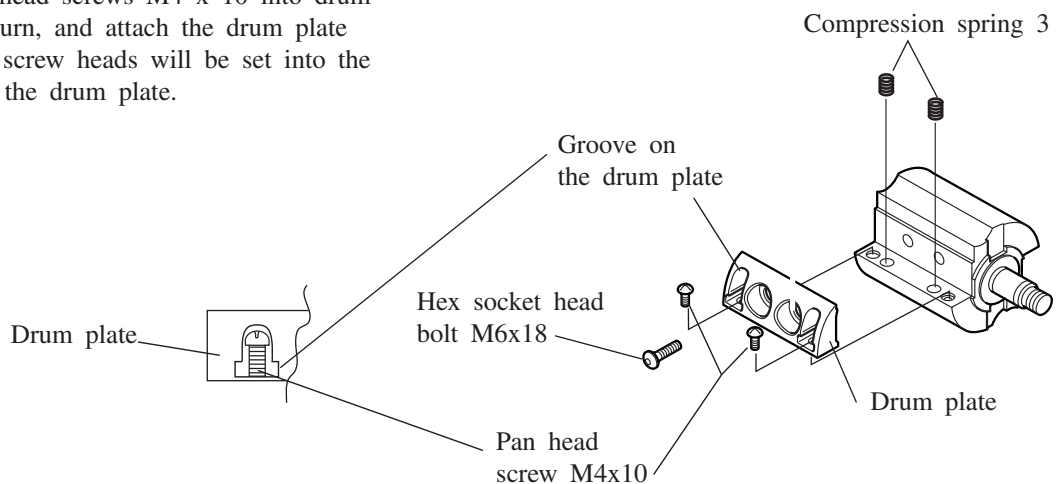


Fig. 3

► Repair

< 4 > Press pulley 7.5-13.5 onto the motor shaft with the dimension as shown in the Fig.4.

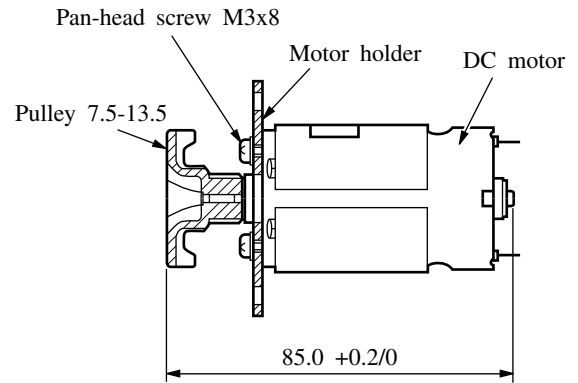
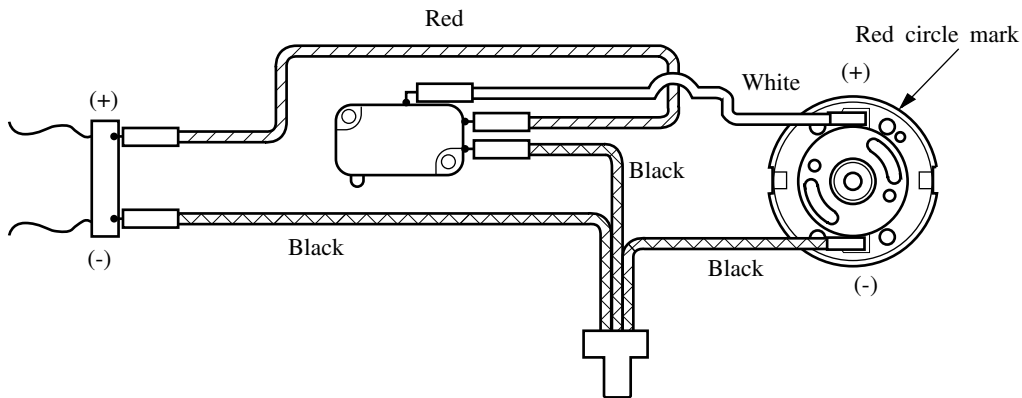


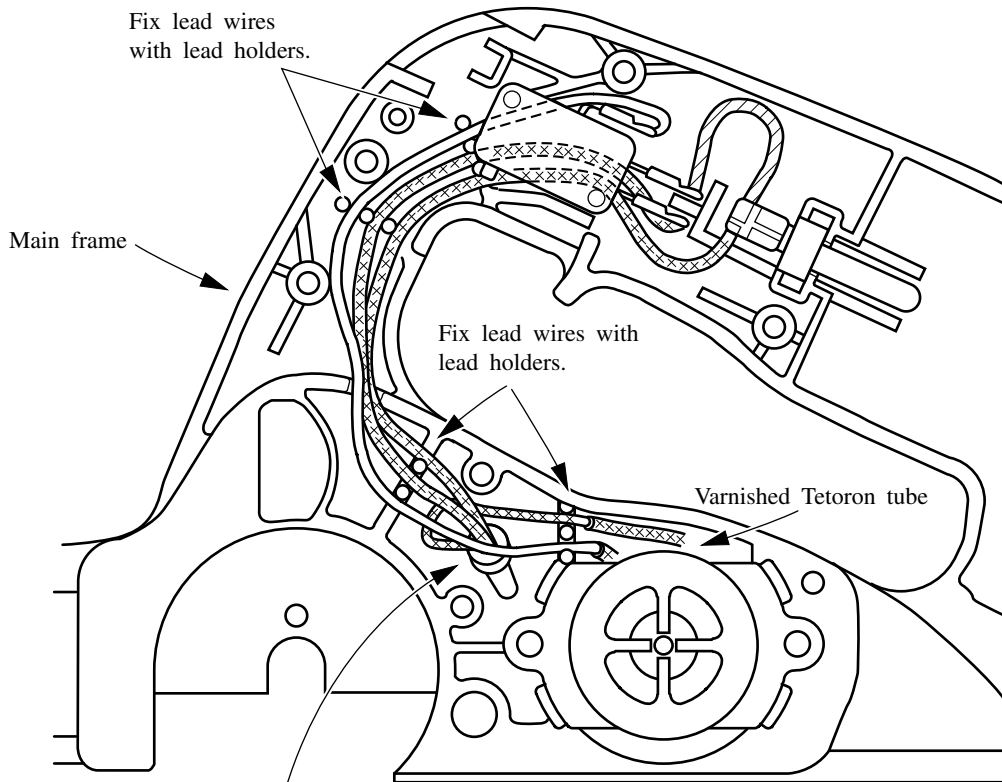
Fig.4.

► Circuit diagram



► Wiring diagram

Arrange lead wires in the main frame as shown below.



Treat connector end as shown in the figure.