

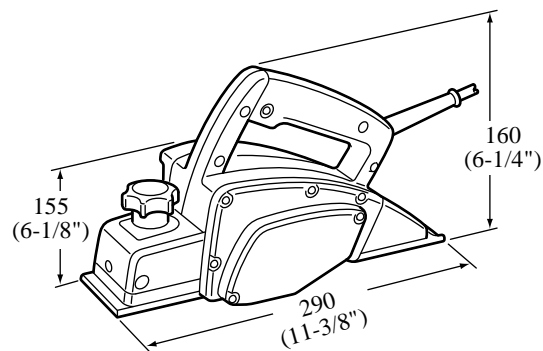
For Models ▶ 1902

Description ▶ MAKITA 82 mm Planer

CONCEPTION AND MAIN APPLICATIONS

Less expensive model based on #1900B.

T.C.T. Planer blade is long-life and usable in both sides.



► Specifications

Voltage (V)	Current(A)	Frequency (Hz)	Consuming power(W)	Nominal output(W)	Max. output(W)
100	5.0	50/60	480	200	400
120	5.2	50/60	580	280	400
220	3.0	50/60	580	280	400
230	2.6	50/60	580	280	400
240	2.6	50/60	580	280	400

Motor	Series wound commutator motor
Speed at no load	16,000 rpm
Plane blade width	82mm(3-1/4")
Max. planing width	82mm(3-1/4")
Max. incision depth	1mm(1/32")

► Standard equipment

Box wrench 9 ...1pc

Blade gauge assembly...1pc

► Optional accessories

Guide rule set

Dust bag assembly

Nozzle assembly

Nozzle

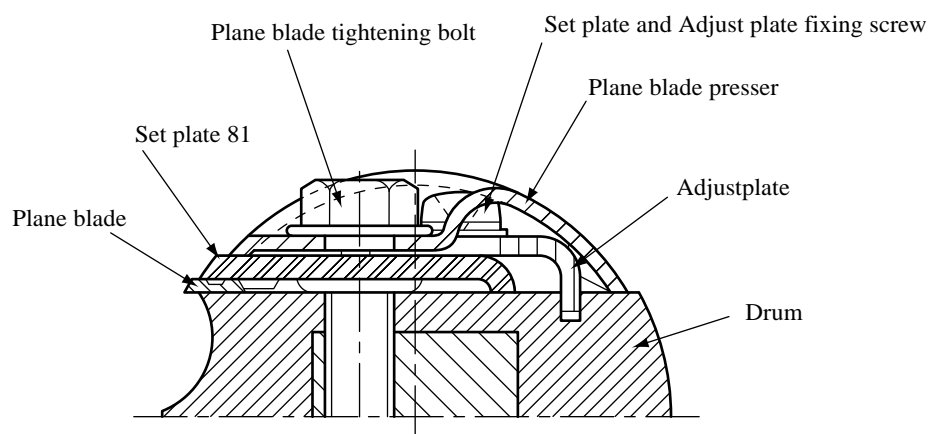
Joint 55

Extension guide set (used together with Guide rule set)

Guide rule assembly

Stand

[Drum assembly]



► Capacity

Same as #1900B

► Repair

Same as #1900B