

# T ECHNICAL INFORMATION

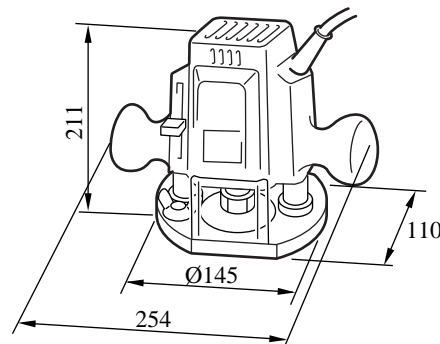


**Models No.** ▶ 3620

**Description** ▶ 8mm Router

## CONCEPTION AND MAIN APPLICATIONS

The Router has been developed for use in DIY home application, with superior advantages in safety (switch mounted on the grip, transparent chip director for easy checking the cutter edge) and controllability (easy-to-hold grip, cord layout without disturbing operation), wherein the power of the existing model #3608B has been reinforced and the up/down function of the #3600NBR is installed on this body.



### ► Specifications

Voltage(V)	Current(A)	Frequency(Hz)	Consumed power(W)	Rated output(W)	Max. output(W)
100	9	50-60	860	600	980
115	7.8	50-60	860	600	980
200	4.5	50-60	860	600	980
220	4.1	50-60	860	600	980
230	3.9	50-60	860	600	980
240	3.8	50-60	860	600	980

No load speed	24000/min
Chuck port diameter(mm)	8,6 (9.53(3/8 ) , 6.35(1/4 ) for special export)
Body up/down range(mm)	35 mm
Weight(kg)	2.4 kg
Cord length(m)	2.5 m

### ► Standard Equipment

Colette corn 6(6.35 for the countries where inch size used)  
 Spanner 8, 13, 22(One for each)  
 Straight guide  
 Template guide 12  
 Straight bit 8

### ► Optional Accessories

Each bit etc  
 Each template guide

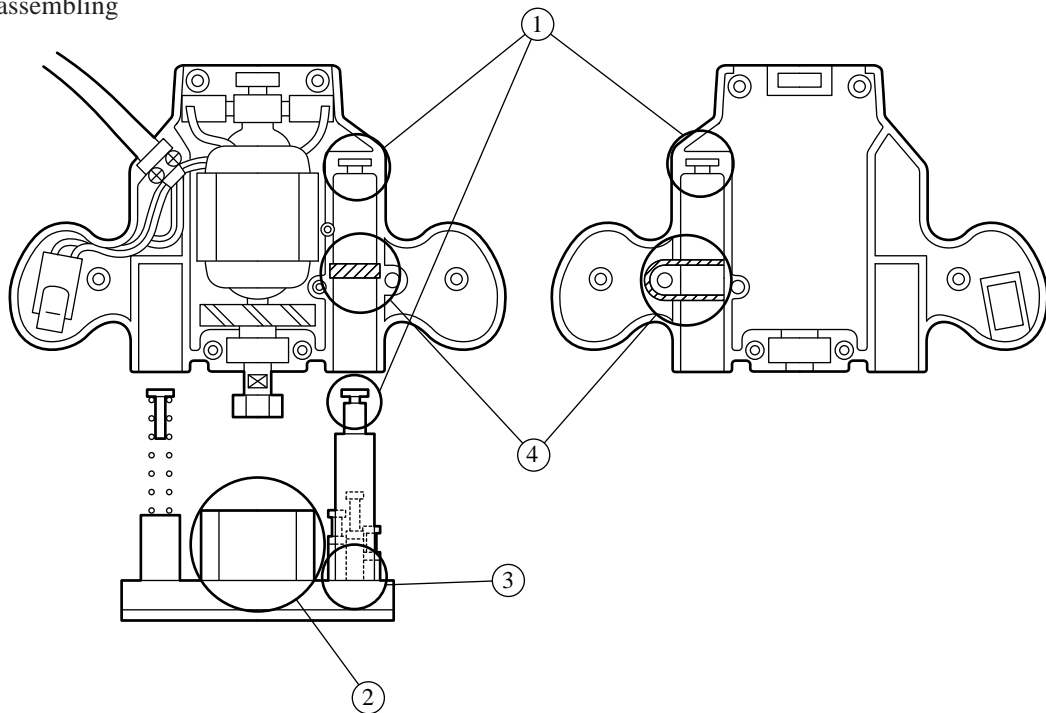
### ► Features And Benefits

1. The newly installed cutting depth adjustment system allows to adjust the cutting depth easily.(See the (1) Comparison of products.)
2. The straight line portion installed on the circle base allows to cut in stable in using along the side face of base.
3. The transparent chip director for easily checking the cutter edge is mounted to protect the cutting chips from being scattered.
4. The lock lever is mounted for enabling to lock up/down while holding the grip.
5. The rotary 3-step system built in the stopper enables speedy and precise step-difference machining.
6. The switch can be controlled while the grip being gripped.(Safety function)

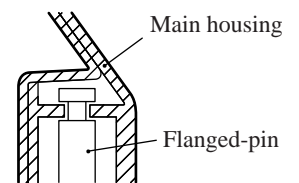
The standard equipment for the tools shown may differ form country to country

## ► Repair

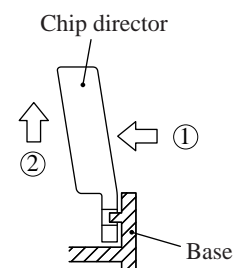
### Cautions in assembling



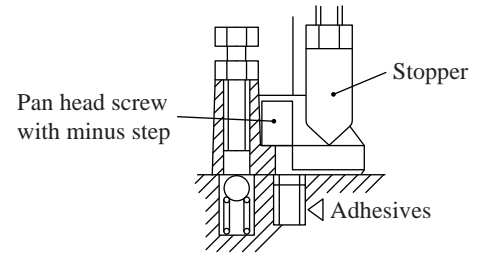
1. To assemble the base on the housing, insert the flanged-pin in the dent portion on the housing.



2. To remove the chip director, pull out in the direction of 2 while pressing the center of it.



3. To assemble the stopper, adhere the adhesive (screw lock super 20Q) on the pan head screw with minus step.



4. When up/down motion of the body became heavy  
After removing the cutting chips inside the pipe slide, lubricate the felt inserted in the housing. Our recommended oil is the machine oil “120 or equivalent.