

T ECHNICAL INFORMATION



New Tool

Models No. ▶ 6410

Description ▶ 10mm Drills

CONCEPT AND MAIN APPLICATIONS

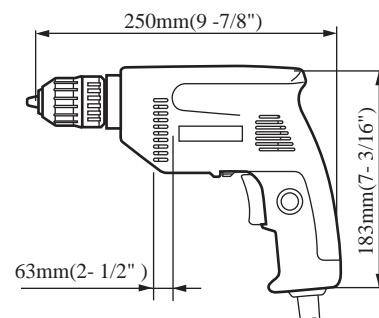
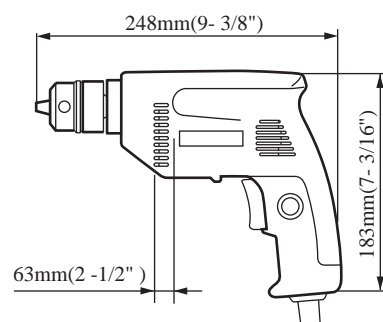
Model 6409/6410 are redesigned versions of the existing 10mm drills and their brief benefits are;

*Reasonable price

*Easy operation

by ergonomic design for easily pushing the axis of drilling

Model	Speed control	Reversing direction of rotation	Drill chuck
6409	No	No	Conventional (Keyed)
6410	Yes	Yes	Keyless



► Specifications

Voltage (V)	Current (A)	Cycle (Hz)	Continuous Rating (W)		Max. Output(W)
			Input	Output	
100	3.7	50/60	350	170	240
120	3.2	50/60	350	170	240
220	1.7	50/60	350	170	240
230	1.6	50/60	350	170	240
240	1.5	50/60	350	170	240

No load speed	6409	2200rpm
	6410	0-2200rpm
Drill chuck capacity	6409	1.5-10mm(1/16-3.8")
	6410	1.0-10mm(1/32-3.8")
Max.drilling capacities	Steel	10mm(3/8")
	Wood	25mm(1")
Net weight		1.2Kg(2.6lbs)
Cord length		2.0m(6.6ft)

► Standard equipment

Chuck Key S10 (Model 6409 only)

► Optional accessories

Drill bit 1.5,2,3,4,5,6

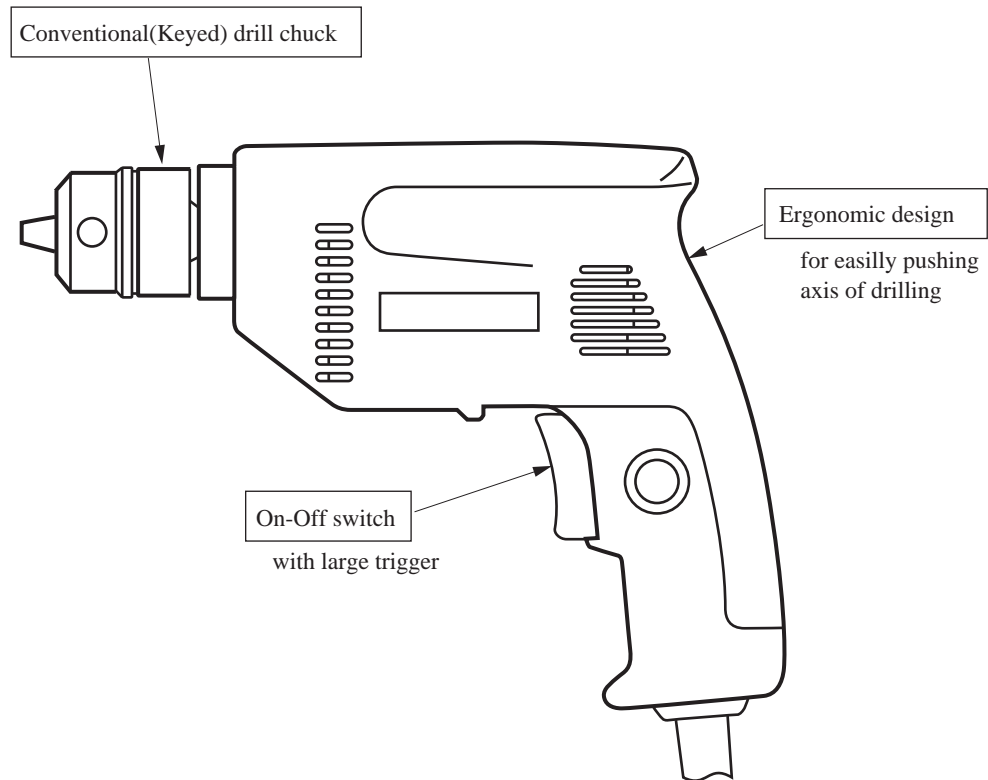
Drill bit for wood 9,12,15

► Features and benefits

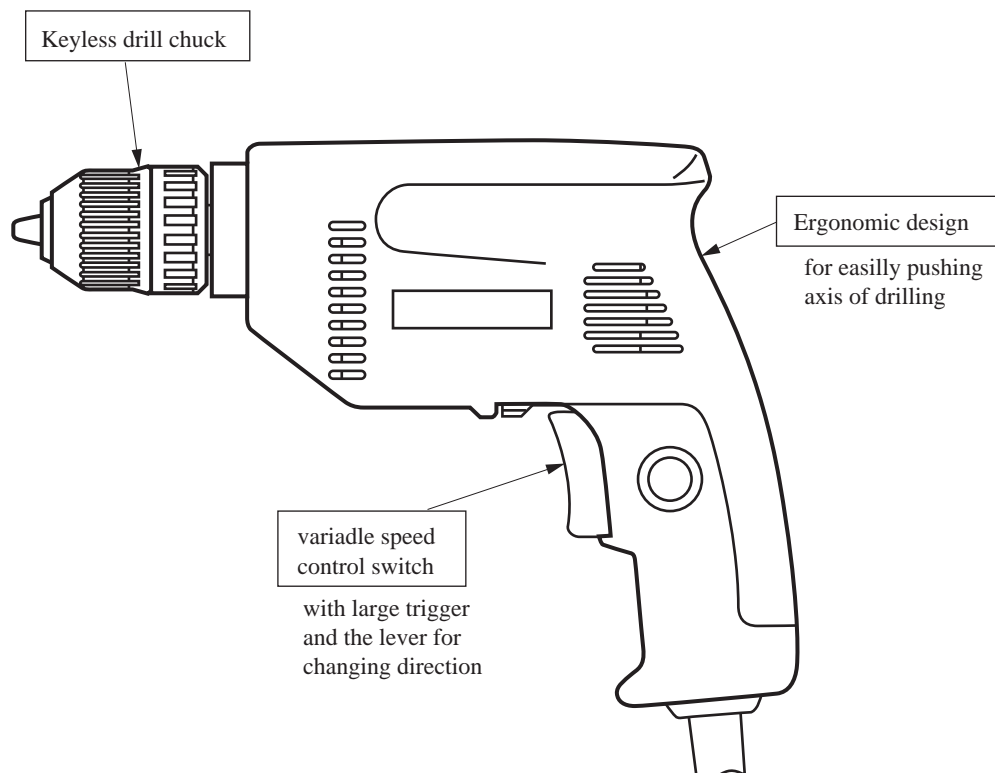
1. Double insulated
2. See the attached sheets for more information.

The standard equipment for the tools shown may differ from country to country.

(1) 6409



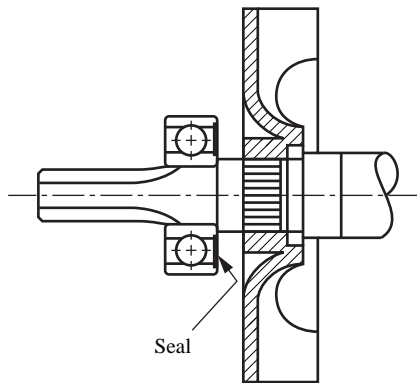
(2) 6410



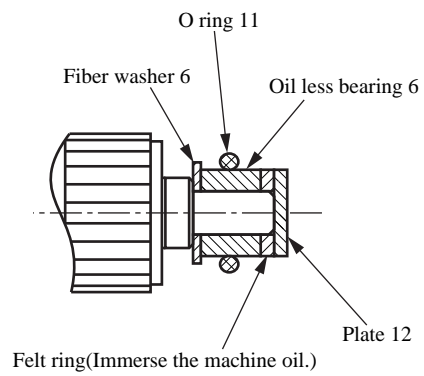
► Repair

Use cares of the following points in assembling/disassembling.

- 1) See the figure below for the positions of ball bearing seal.
- 2) Assemble the shaft receiver of the commutator side as shown on the below figure.



1) Positions of ball bearing seal

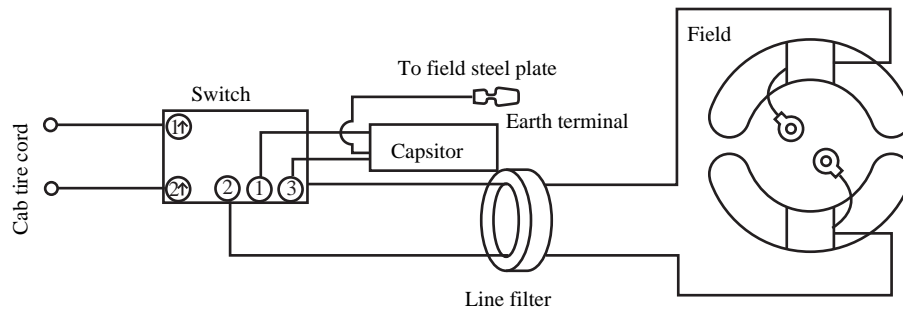


2. Assembling of shaft receiver at commutator side

► Circutt drawing

Circuit drawing of #M606, #6409:

The condenser and line filter are not used in some countries.



Circuit drawing of #M607, #6410:

The condenser, chalk coil and line filter are not used in some countries.

