

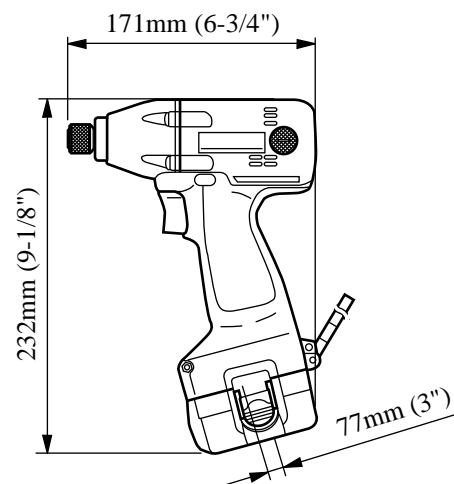
For Models ▶ 6908D

Description ▶ Cordless Impact Driver

CONCEPTION AND MAIN APPLICATIONS

This 9.6V cordless impact driver is upgraded version of existing Model 6903VD and its brief benefits are;

- *Faster driving speed
- *More number of driving screws from a single charge
- *Compact design and good balance
- *Lower vibration and lower noise
- *Motor is more durable and longer life.
- *Carbon brushes can be replaced without dis-assembling housing.
- *New switch has wider area of stroke for variable speed so that speed control becomes easier.
- *Reversing switch button located at the top of the handle so that user can change direction easily leaving the other hand free.
- *Battery 9122(2.0Ah) can be removed easily by pushing buttons.



Model	Battery(2.0Ah)	Fast charger	Plastic carrying case
6908DA	Battery9122	No	No
6908DWA	Battery9122	DC1410	Yes

► Specifications

Motor		DC 9.6V magnet motor
Battery		Battery 9122(Ni-Cd, 9.6V, 2.0Ah)
No load speed		0~2200rpm
Impacts per minute		0~2800
Max. tightening torque		800kgf.cm (700in.lbs)
Capacities	Machine screw	M4~M8(5/32"~5/16")
	Standard bolt	M4~M12(5/32"~1/2")
	High tensile bolt	M5~M10(3/16"~3/8")
	Coarse thread	22~90mm(7/8"~3-1/2")
	Self drilling	M4~M6 x 13~45mm(5/32"~1/4" x 1/2"~1-3/4")
Net weight		1.4kg (3.1lbs)

► Standard equipment

Phillips Bit 2-65...1pc. Battery Cover...1pc. Set Plate(to use battery without push buttons)...1pc.
Plastic Carrying Case(6908DWA only)...1pc.

► Optional accessories

Phillips Bit 2-65, 3-65 Bit Piece
Socket Bit 7-55, 8-55, 10-55, 10-70, 12-86, 13-55, 14-55, 17-55
Keyless Drill Chuck Drill Chuck
Battery 9100, 9102, 9122, 9102A Fast Charger DC1201, DC1209, DC1410

► Features and benefits

See the sheets attached for more information.

Fastest driving speed Most number of driving screws among the same class models

Ergonomic design for easy operation

Handle shaped ergonomically and well balanced

Lowest vibration and lowest noise

Length : 171mm(6-3/4")

Center height 26mm (1-1/32")

Aluminum Hammer Case

Push button for reversing direction of rotation

can be actuated easily leaving the other hand free

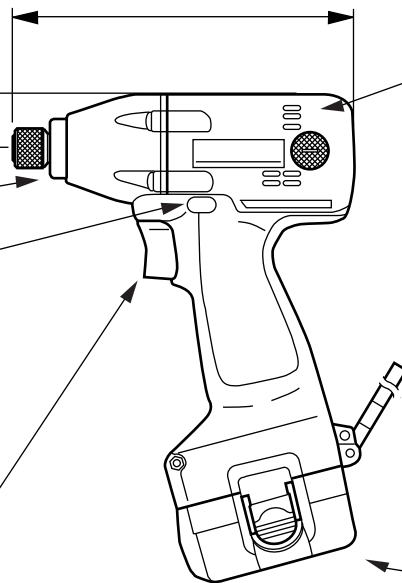
New variable speed control switch makes speed control easiest in the world.

More durable and longer life motor

Carbon brushes can be replaced twice till motor is worn out.

Battery 9122(2.0Ah)

*can be removed easily by pushing buttons
*New high capacity battery
*Battery without push buttons can be used with set plate(standard accessory) .



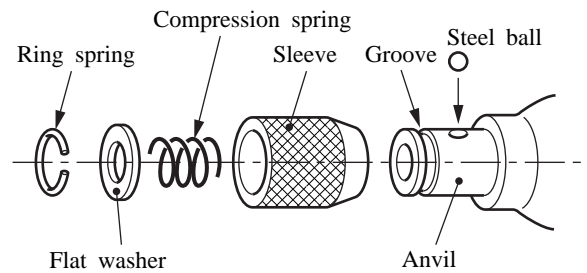
► Caution

Please refer to the instruction manual for Model 6908DW.

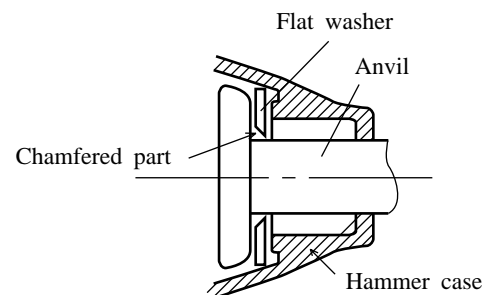
► Repair

- (1) How to dismount the housing R and L
Dismount the housing after taking off the hammer case.

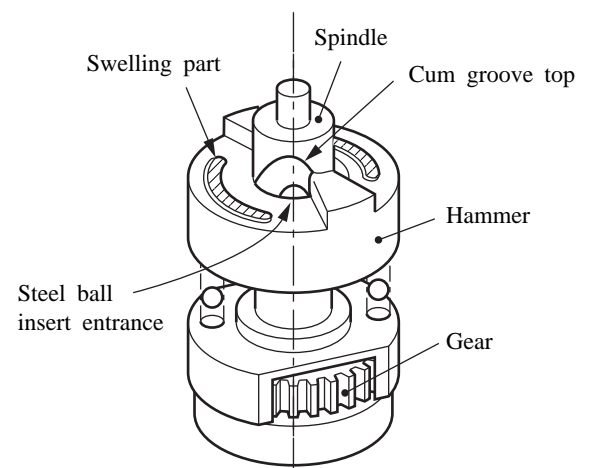
- (2) How to dismount the bit holder
Bit holder is constructed as illustrated right.
Take off the ring spring, and then bit holder can be dismounted.
After dismounting of bit holder, the anvil can be dismounted from the hammer case.



- (3) How to mount the flat washer
The flat washer has to be mounted between hammer case and anvil.
In this case, the chamfered part on the flat washer has to face the anvil as illustrated right.



- (4) How to dismount the hammer
Adjust the open part for steel ball on hammer with the top of groove on spindle pressing the hammer with arbor press.
Then the steel ball can be taken off in order to dismount the hammer.

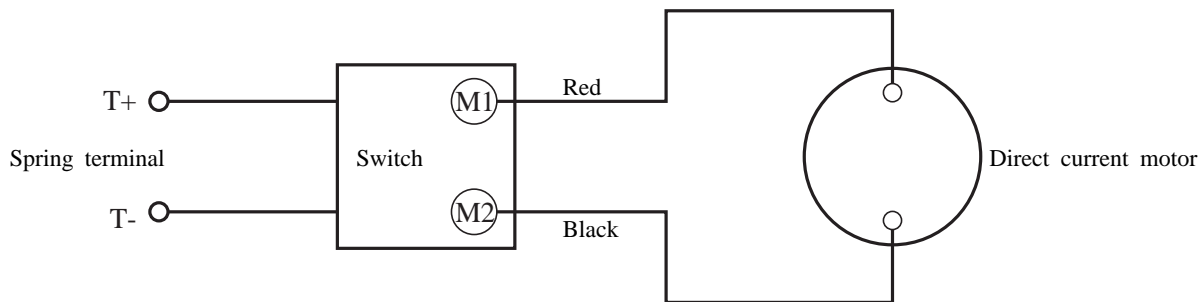


(5) Fastening of screws

The screws have to be fastened as follows.

Parts to be fastened with screws	Fastening Torque
Housing	13-18 kg.cm (11-15 in.lbs)
Hammer case	18-22 kg.cm (15-18 in.lbs)
Motor	6-10 kg.cm (5-8 in.lbs)
Fastening for the hammer case has to be carried out according to the diagonal order.	

► Circuit diagram



6908D Circuit diagram

► Interchangeability

The following spare parts have can interchangeability with the existing models.

Parts Name	Existing models
Sleeve	6903V
Compression Spring 13	
Flat Washer 12	
Ring Spring 11	
Steel Ball 5.6	
Hand Strap	6911D
Anvil	6913D