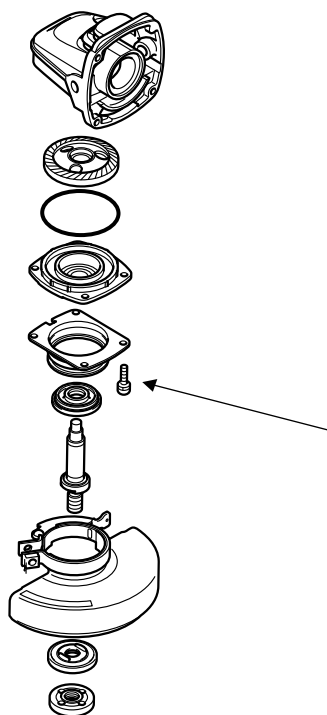


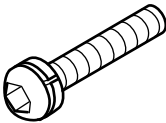
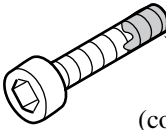
T ECHNICAL INFORMATION



64056

Subject	▶ Change of Hex. Socket Head Bolt M4X16
For Models	▶ 9560, 9560C, 9560CV, 9561, 9561C, 9561CV, 9562, 9562C, 9562CV, 9563, 9563C, 9563CV, 9564, 9564C, 9564CV, 9564CVL, 9565, 965C, 9565CV, 9565CVL
Country	▶ All countries
Description	▶ Hex. Socket Head Bolt M4X16 has been changed as shown below.



▶ Current	▶ New
 <p>Hex. Socket Head Bolt M4X16 (with Spring Washer) (266260-6)</p>	 <p>Hex. Socket Head Bolt M4X16 (with adhesive applied) (265490-6)</p>

Interchangeability(I/C)

Item No.	Current part		Q'ty	I/C	New part		Q'ty	Note
052	Hex. Socket Head Bolt M4X16 266260-6		4	←	Hex. Socket Head Bolt M4X16 265490-6		4	

Interchangeability mark ;

The arrow ← means that the new part can be substituted for the current.

Implementation

9565C: From serial No. 7972E (June, 2001)

9565CV: From serial No. 17324E (June, 2001)

The remaining models: To be informed later.