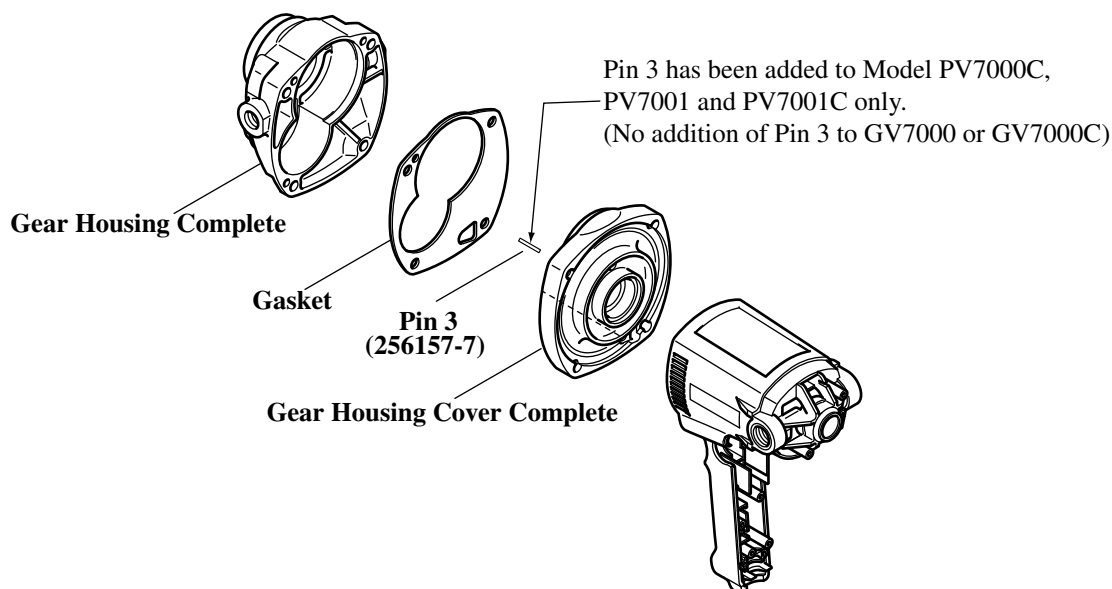


- Subject** ▶ Change of Gear Housing Complete, Gasket, Gear Housing Cover Complete and Addition of Pin 3
- For Models** ▶ GV7000, GV7000C, PV7000C, PV7001, PV7001C
- Country** ▶ All countries
- Description** ▶ Regarding models PV7000C, PV7001, and PV7001C, Gear Housing Complete, Gasket and Gear Housing Cover Complete have been changed, and Pin 3 has been added as shown below.  
Regarding GV7000 and GV7000C, only Gasket has been changed.



## ● Gear Housing Complete

▶ Current	▶ New
<p>(152691-4)</p>	<p>(153318-9) A hole for Pin 3 has been added.</p>

## ● Gasket

▶ Current	▶ New
<p>(442132-1)</p>	<p>(417837-2) A hole for Pin 3 has been added.</p>

## ● Gear Housing Cover Complete

▶ Current	▶ New
<p>(152692-2)</p>	<p>(153319-7) A hole for Pin 3 has been added.</p>

### Interchangeability(I/C)

• PV7000C, PV7001, PV7001C

Item No.	Current part		Q'ty	I/C	New part		Q'ty	Note
005	Gear Housing Complete 152691-4		1	←	Gear Housing Complete 153318-9		1	
013	Gear Housing Cover Complete 152692-2		1	←	Gear Housing Cover Complete 153319-7		1	
PV7000C: 044 PV7001, PV7001C: 048					Pin 3 256157-7		1	
012	Gasket 442132-1		1	←	Gasket 417837-2		1	

• GV7000, GV7000C

Item No.	Current part		Q'ty	I/C	New part		Q'ty	Note
012	Gasket 442132-1		1	Yes	Gasket 417837-2		1	

**Interchangeability mark ;**

The arrow ← means that the new part can be substituted for the current.

### Note

Regarding GV7000 and GV7000C, Gear Housing Complete and Gear Housing Cover Complete remain unchanged.

### Implementation

GV7000C: From serial No. 1798E (July, 2001)

The remaining models: To be informed later.