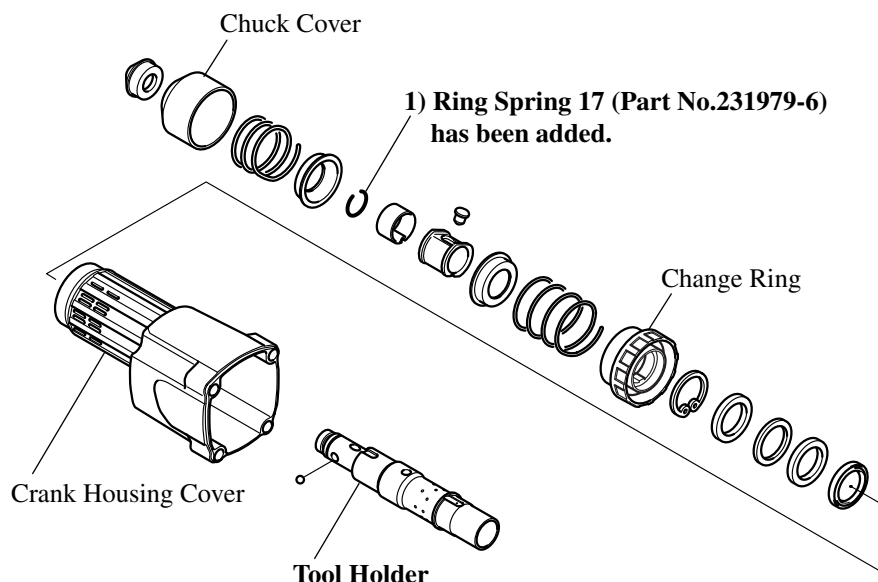


- Subject** ➤ Addition of Ring Spring 17 and Modification of Tool Holder
- For Models** ➤ HK0500
- Country** ➤ All countries
- Description** ➤ In order to improve anti-dust construction of Chuck,
 1) Ring Spring 17 has been added on Tool Holder.
 2) Tool Holder has been modified so that it can accept Ring Spring 17.



2) Modification of Tool Holder

► Current	► New
<p>(Pt. No. 323839-7)</p>	<p>A groove has been made in Tool Holder to fit the Ring Spring 17 on it.</p> <p>(Pt. No. 324063-5)</p>

Interchangeability(I/C)

Item No.	Current part		Q'ty	I/C	New part		Q'ty	Note
019	Tool Holder 323839-7		1	←	Tool Holder 324063-5		1	Interchangeable as a set
077					Ring Spring 17 231979-6		1	

Note

Interchangeability mark ; ← means that the new part is substituted for the current.

Implementation

From serial No. 17774E (May, 2000)