

**For Models**

HM0810B

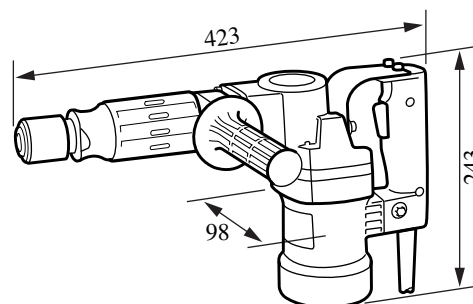
**Description**

Demolition Hammer

## CONCEPTION AND MAIN APPLICATIONS

It accepts Bosch type spline drive bits.

All the other mechanical and electrical features are identical with the existing Model HM0810 Hammer.



### ► Specifications

Voltage(V)	Current(A)	Cycle(Hz)	Continuous rating input(W)	Max. Output(W)
-	-	-	-	-
115	8.3	50/60	420	820
200	4.8	50/60	420	820
220	4.3	50/60	420	820
230	4.1	50/60	420	820
240	4.0	50/60	420	820

<b>Net Weight</b>	5.3kgs (without side grip)
<b>Blows per minute</b>	2,900bpm (No load)
<b>Power supply cord</b>	5m (16.4ft)

### ► Capacity

**Hex diameter of shank : 19mm**

The machine handles demolishing, scooping, bushing, grooving or anchoring works.

### ► Standard equipment

Steel carrying case  
Bull point  
Allen wrench

### ► Optional accessories

Bull point, Cold chisel, Scaling chisel, Grooving chisel, Scoop, Bushing head, Rammer, Anchor adapter, Makita grease, Wrench and Spoid.

### ► Features

1. Good for Bosch-type spline drive bits
2. The improved tool retainer

### ► Benefits

- \*Very economical and convenient as you can make the most of the bits of other makes on hand as well as Makita bits.
- \*Easy and quick to install or remove bits, by simple twist of retainer.