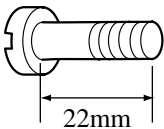
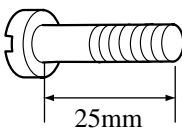


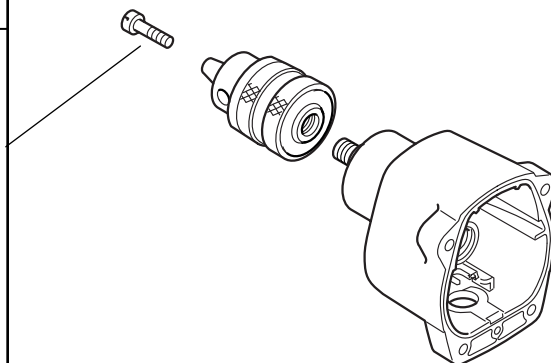
T ECHNICAL INFORMATION



68496

- Subject** ▶ Change of (-) Flat Head Screw M6x22
- For Models** ▶ HP2030, HP2032
- Country** ▶ All countries
Note: This technical information applies to the products manufactured in MME.
- Description** ▶ (-) Flat head screw M6x22 has been replaced by (-) Flat head screw M6x25 as illustrated below.

▶ Current	▶ New
 <p>22mm (7/8")</p> <p>(-) Flat head screw M6x22 (251460-1)</p>	 <p>25mm (1")</p> <p>(-) Flat head screw M6x25 (251469-3)</p> <p>The length of the thread portion has become three millimeter longer.</p>



(Model HP2030)

Interchangeability(I/C)

Item No.	Current part		Q'ty	I/C	New part		Q'ty	Note
001	- Flat Head Screw M6x22 251460-1		1	←	- Flat Head Screw M6x25 251469-3		1	

Interchangeability mark ;

The arrow ← means that the new part is substituted for the current.

Implementation

To be implemented since Mar.,2003 production.