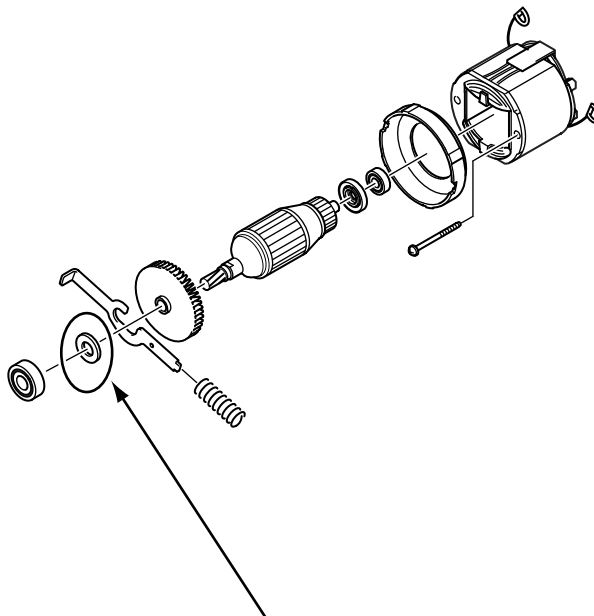


TECHNICAL INFORMATION



69242

- Subject** ▶ Change of Flat Washer 15
- For Models** ▶ LS1011N, LS1030N, LS1040, LS1040F, LS1045
- Country** ▶ All countries
- Description** ▶ Outer diameter of Flat washer 15 has been changed from $\phi 22\text{mm}(7/8")$ to $\phi 19\text{mm}(3/4")$.



▶ Current	▶ New
<p>$\phi 22\text{mm}(7/8")$</p> <p>Flat Washer 15 (253853-8)</p>	<p>$\phi 19\text{mm}(3/4")$</p> <p>Flat Washer 15 (267280-3)</p>

Interchangeability(I/C)

Item No.	Current part		Q'ty	I/C	New part		Q'ty	Note
003	Flat Washer 15 253853-8		1	←	Flat Washer 15 267280-3		1	

Interchangeability mark ;

The arrow ← means that the new part can be substituted for the current.

Implementation

Since Nov., 2003 production.