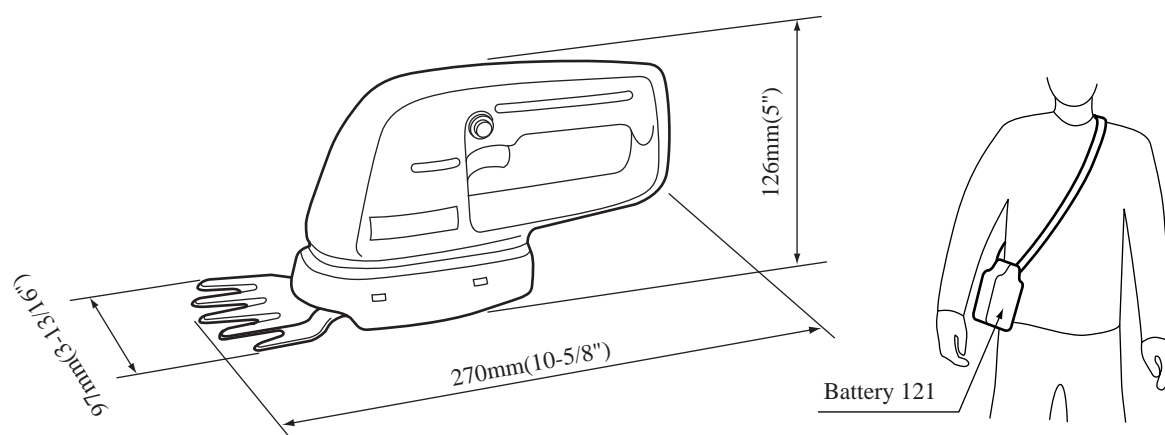


**Models No.** ▶ UM103D

**Description** ▶ Battery-Powered Grass Shear

## CONCEPTION AND MAIN APPLICATIONS

These grass shears are operated by Makita battery 121 (lead-acid battery) which can be slung over a shoulder. So they are very maneuverable. Model UM103D is sold without battery and charger. Model UM103DW includes a Makita battery 121 and a Makita charger DC121.



### ► Specifications

DC Magnet Motor (12 V)

<b>Effective Cutting Width</b>	100 mm (4")
<b>Strokes per Minute</b>	1,000
<b>Net Weight</b>	0.75 kg (1.65 lbs) for tool 1.9 kg (4.2 lbs) for battery
<b>Operating Time</b>	Approx. 2 hours on a single charge
<b>Charging Time</b>	Approx. 8 hours

### ► Standard equipment

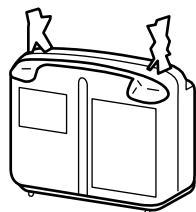
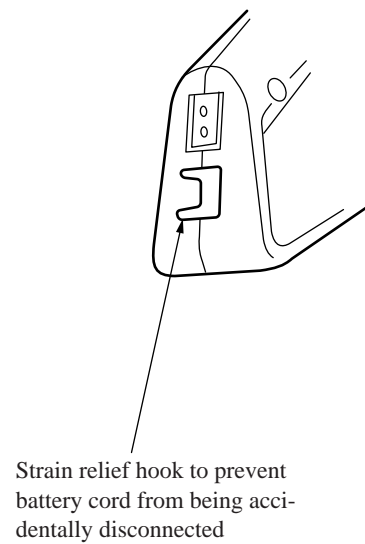
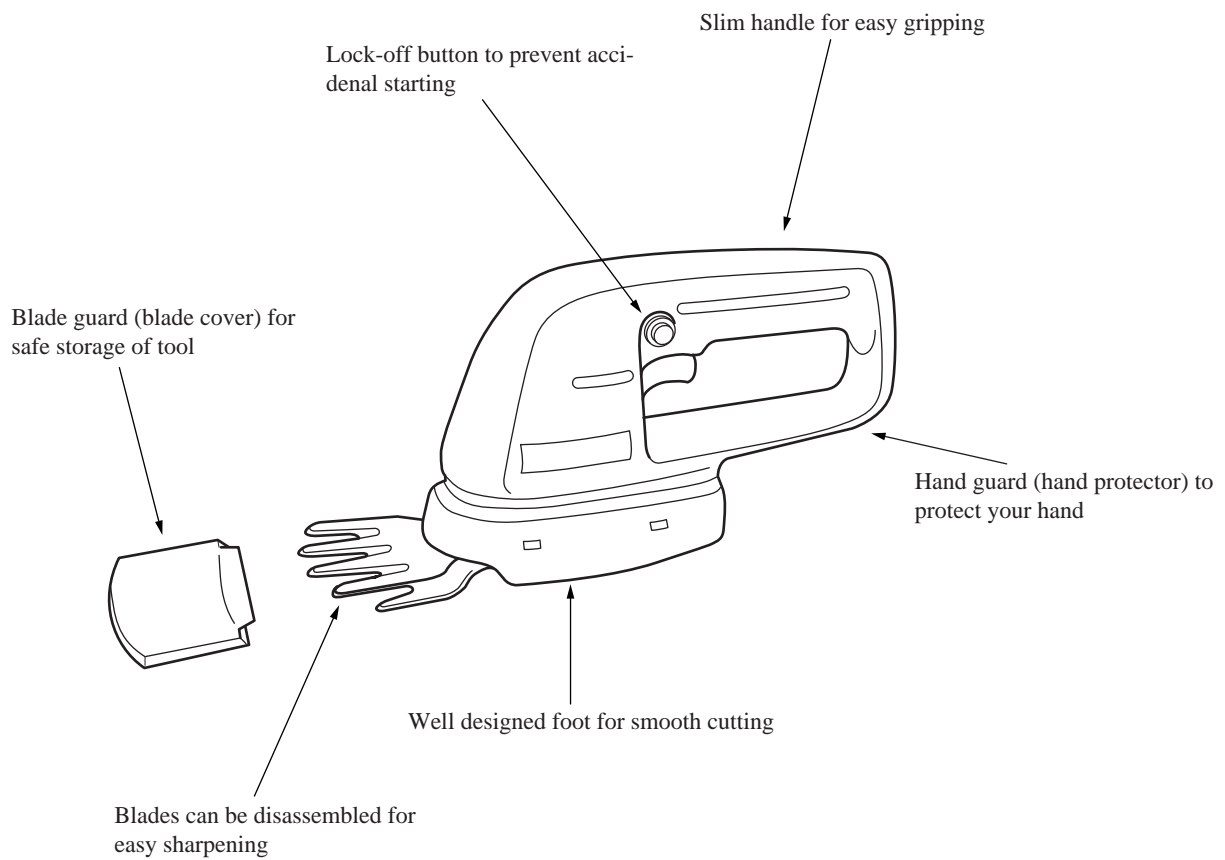
Blade Guard (Blade Cover), Battery 121 (UM103DW only), Charger DC121 (UM103DW only)

### ► Optional accessories

Shear Blade Set, Battery 121, Charger DC121

### ► Features and benefits

1. Refer to the attached sheet.



Makita battery 121(lead-acid battery)