

100,000 RPM Pencil Grinder

Air Tool Manual – Safety, Operation and Maintenance

SAVE THIS DOCUMENT, EDUCATE ALL PERSONNEL

Models:

- 51810 (1/8" Collet)
- 51811 (1/16" Collet)
- 51812 (3/32" Collet)
- 51813 (3mm Collet)



FIND THE MOST CURRENT OFFERING OF SUPPORT DOCUMENTS AND ACCESSORIES @ WWW.DYNABRADE.COM

! WARNING

Read and understand this tool manual before operating your air tool. Follow all safety rules for the protection of operating personnel as well as adjacent areas. Always operate, inspect and maintain this tool in accordance with the American National Safety Institute (ANSI) Safety Code for Portable Air Tools – B186.1. For additional safety information, refer to Safety Requirements for the Use, Care and Protection of Abrasive Wheels – ANSI B7.1, Code of Federal Regulation – CFR 29 Part 1910, European Committee for Standards (EN) Hand Held Non-Electric Power Tools – Safety Requirements and applicable State and Local Regulations.

SAFETY LEGEND

	! WARNING Read and understand tool manual before work starts to reduce risk of injury to operator, visitors, and tool.	! WARNING Practice safety requirements. Work alert, have proper attire, and do not operate tools under the influence of alcohol or drugs.	
	! WARNING Eye protection must be worn at all times, eye protection to conform to ANSI Z87.1.	! WARNING Ear protection to be worn when exposure to sound, exceeds the limits of applicable Federal, State or local statutes, ordinances and/or regulations.	
	! WARNING Respiratory protection to be used when exposed to contaminants that exceed the applicable threshold limit values required by law.	! WARNING Air line hazard, pressurized supply lines and flexible hoses can cause serious injury. Do not use damaged, frayed or deteriorated air hoses and fittings.	

! WARNING

Some dust created by sanding, sawing, grinding, drilling, and other construction activities contain chemicals known to cause cancer, birth defects or other reproductive harm. Some examples of these chemicals are:

- Lead from lead-based paints
- Crystalline silica from bricks and cement and other masonry products
- Arsenic and chromium from chemically treated lumber

Your risk from these exposures varies, depending on how often you do this type of work. To reduce your exposure to these chemicals: work in a well ventilated area, and work with approved safety equipment, such as those dust masks that are specially designed to filter out microscopic particles.

SAFETY INSTRUCTIONS

Carefully Read all instructions before operating or servicing any Dynabrade® Abrasive Power Tool.

Products offered by Dynabrade are not to be modified, converted or otherwise altered from the original design without expressed written consent from Dynabrade, Inc.

Tool Intent: Pencil Grinder Tools are ideal for engraving, light deburring, deflashing, surface preparation, cleaning and finishing using the proper abrasive stones, abrasive mounted wheels, points, molded abrasives, and carbide burrs.

Do not use tool for anything other than its intended applications.

This power tool is not intended for use in potentially explosive atmospheres and is not insulated against contact with electrical power.

Training: Proper care, maintenance, and storage of your tool will maximize performance.

- Employer's Responsibility – Provide Pencil Grinder operators with safety instructions and training for safe use of tools and accessories.

Accessory Selection:

- Abrasive/accessory RPM (speed) rating MUST be approved for AT LEAST the tool RPM rating.

(continued on next page)

SAFETY INSTRUCTIONS (Cont.)

- Before mounting an accessory, visually inspect for defects. Do not use defective accessories.
- Use only accessories of the correct shaft size for the collet.
- Follow tool specifications before choosing size and type of accessory.
- Only use recommended fittings and air line sizes. Air supply hoses and air hose assemblies must have a minimum working pressure rating of 150 PSIG (10 Bars, g) or 150 percent of the maximum pressure produced in the system, whichever is higher. (See tool Machine Specifications table.)
- If a grinding wheel is broken, a careful investigation should be made by the user to determine and correct the cause.

OPERATING INSTRUCTIONS

Warning: Always wear personal protection equipment. Operator of tool is responsible for following: accepted eye, face, respiratory, hearing and body protection. Adjacent personnel must be protected from potential injury.

Caution: Hand, wrist and arm injury may result from repetitive work, motion and overexposure to vibration.

Operation: Be sure that any loose clothing, hair and all jewelry is properly restrained. Keep hand and clothing away from working end of the air tool.

- BEFORE MOUNTING AN ACCESSORY, after all tool repairs and whenever a pencil grinder is issued for use, check tool RPM (speed) with tachometer with air pressure set at 90 PSIG while the tool is running. If tool is operating at a higher speed than the RPM marked on the tool housing, or operating improperly, the tool must be serviced and corrected before use.

Caution: Tool RPM must never exceed abrasive/accessory RPM rating. Check accessory manufacturer for details on maximum operating speed or special mounting instructions.

- With power source disconnected from air tool check the collet to assure it is in good condition. If so mount the recommended accessory.
- Make sure tool is off and connect power source.

Do not expose air tool to inlet pressure above 90 PSIG or (6.2 Bars).

- This tool should use filtered and regulated air, but does not require lubricated air. Lubricated air is not detrimental to tool life.

Caution: After installing the accessory, before testing or use and/or after assembling tool, the pencil grinder must be started at a reduced speed to check for good balance. Make sure no one is in the unguarded plane of the wheel. Gradually increase tool speed. DO NOT USE if tool vibration is excessive. Correct cause, and retest to insure safe operation. Run tool for 1 minute of operating speed in a protected area.

- Make sure that work area is uncluttered, and visitors are at a safe range from the tools and debris.
- Use a vise or clamping device to hold work piece firmly in place.
- Do not apply excessive force on tool or apply "rough" treatment to it.
- Always work with a firm footing, posture and proper lighting.
- Ensure that sparks and debris resulting from work do not create a hazard.
- Tools exhaust may contain lubricants, bearing grease, and other materials. Direct exhaust away from operator.
- Do not use cut off wheels or router bits in this tool.
- Make sure that insert tools have the correct shaft size for the collet insert. i.e. 1/8" shaft = 1/8" collet insert
- Note the tool rundown time. Control the tool as if it were under power.
- Insure that the cutting tools are mounted securely in the collet, by inserting the shank a minimum of 1in., sliding the o-ring away from the cross holes and groove in housing, fixing the spindle with the supplied pin wrench and tightening the collet with a minimum of 25 in.- lbs. (2.8 N•m) torque.
- Insure that the pin wrench is clean and free of debris before inserting into tool housing.
- Use long shank burrs (1.9" or longer) with caution. They are subject to bending, whipping, and breaking when run at high speeds.
- The rated RPM of a mounted point is lowered if the overhang (end of collet to abrasive) exceeds .5 inches (12.7mm). Refer to the included tables. Reference ANSI B 7.1 for a more complete listing and additional information.
- Use hearing protection when working with materials that produce high process noise levels. Permanent hearing loss can result from high sound levels.
- Check free speed of pencil grinder using a tachometer every 20 hours of use or weekly, whichever occurs more frequently.
- Mineral spirits are recommended when cleaning the tool and parts. Do not clean tool or parts with any solvents or oils containing acids, esters, ketones, chlorinated hydrocarbons or nitro carbons.
- Do Not set the tool down until the on/off valve is OFF and the tool has stopped turning.

Report to your supervisor any condition of the tool, accessories, or operation you consider unsafe.

MAINTENANCE INSTRUCTIONS

Important: A Preventative Maintenance Program is recommended for this tool. The program should include inspection of air supply lines, air line pressure and repair of tools. Refer to ANSI B186.1 for additional maintenance information.

- Use only genuine Dynabrade replacement parts to insure quality. To order replacement parts, specify **Model#**, **Serial#** and **RPM** of your air tool.
- All Dynabrade Air Tools must be used with a Filter-Regulator to maintain all warranties.

Routine Preventative Maintenance:

- An Air Line Filter-Regulator must be used with this air tool to maintain all warranties. Dynabrade recommends the following: 11402 Air Line Filter-Regulator – Provides accurate air pressure regulation, two-stage filtration of water contaminants. Operates 40 SCFM @ 90 PSIG has 3/8" NPT female ports.
- **DO NOT** clean or maintain tools with chemicals that have a low flash point (example: WD-40®).
- Air tool markings must be kept legible at all times. User is responsible for maintaining specification information i.e.: Model #, S/N, and RPM.
- Blow air supply hose out prior to initial use.
- Visually inspect air hoses and fittings for frays, visible damage and signs of deterioration. Replace damaged or worn components.
- Refer to Dynabrade's Warning/Safety Operating Instructions Tag (Reorder No. **95903**) for safety information.

Handling and Storage:

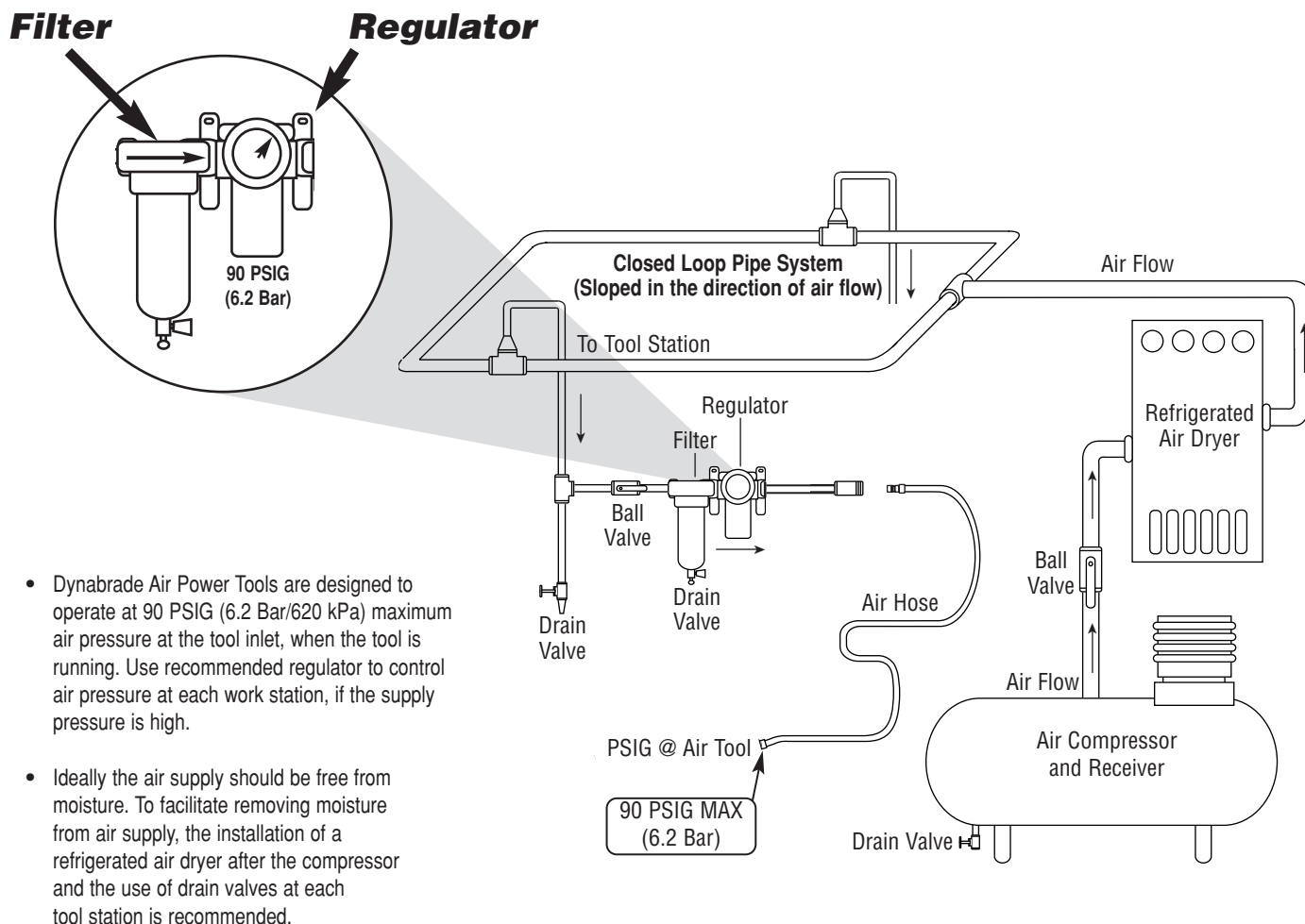
- Use of tool rests, hangers and/or balancers is recommended.

MAINTENANCE INSTRUCTIONS - CONTINUED

Handling and Storage:

- Protect tool inlet from debris.
- **DO NOT** carry tool by air hose.
- **DO NOT** force grinding swarf into the tool with compressed air; specifically avoid the pin wrench hole and front bearing areas.
- Protect abrasive accessories from exposure to water, solvents, high humidity, freezing temperature and extreme temperature changes.
- Store accessories in protective racks or compartments to prevent damage.

Air System



Notice

All Dynabrade motors use the highest quality parts and metals available and are machined to exacting tolerances. The failure of quality pneumatic motors can most often be traced to an unclean air supply. Air pressure easily forces dirt or water contained in the air supply into motor bearings causing early failure. Dirt and water often score the inner workings of the tool resulting in limited efficiency and power. Our warranty obligation is contingent upon proper use of our tools and cannot apply to equipment which has been subjected to misuse such as unclean air, wet air or a lack of maintenance during the use of this tool.

One Year Warranty

Following the reasonable assumption that any inherent defect which might prevail in a product will become apparent to the user within one year from the date of purchase, all equipment of our manufacture is warranted against defects in workmanship and materials under normal use and service. We shall repair or replace at our factory, any equipment or part thereof which shall, within one year after delivery to the original purchaser, indicate upon our examination to have been defective. Our obligation is contingent upon proper use of Dynabrade tools in accordance with factory recommendations, instructions and safety practices. It shall not apply to equipment which has been subject to misuse, negligence, accident or tampering in any way so as to affect its normal performance. Normally wearable parts such as bearings, contact wheels, rotor blades, etc., are not covered under this warranty.

Models:

51810, 51811

51812, 51813

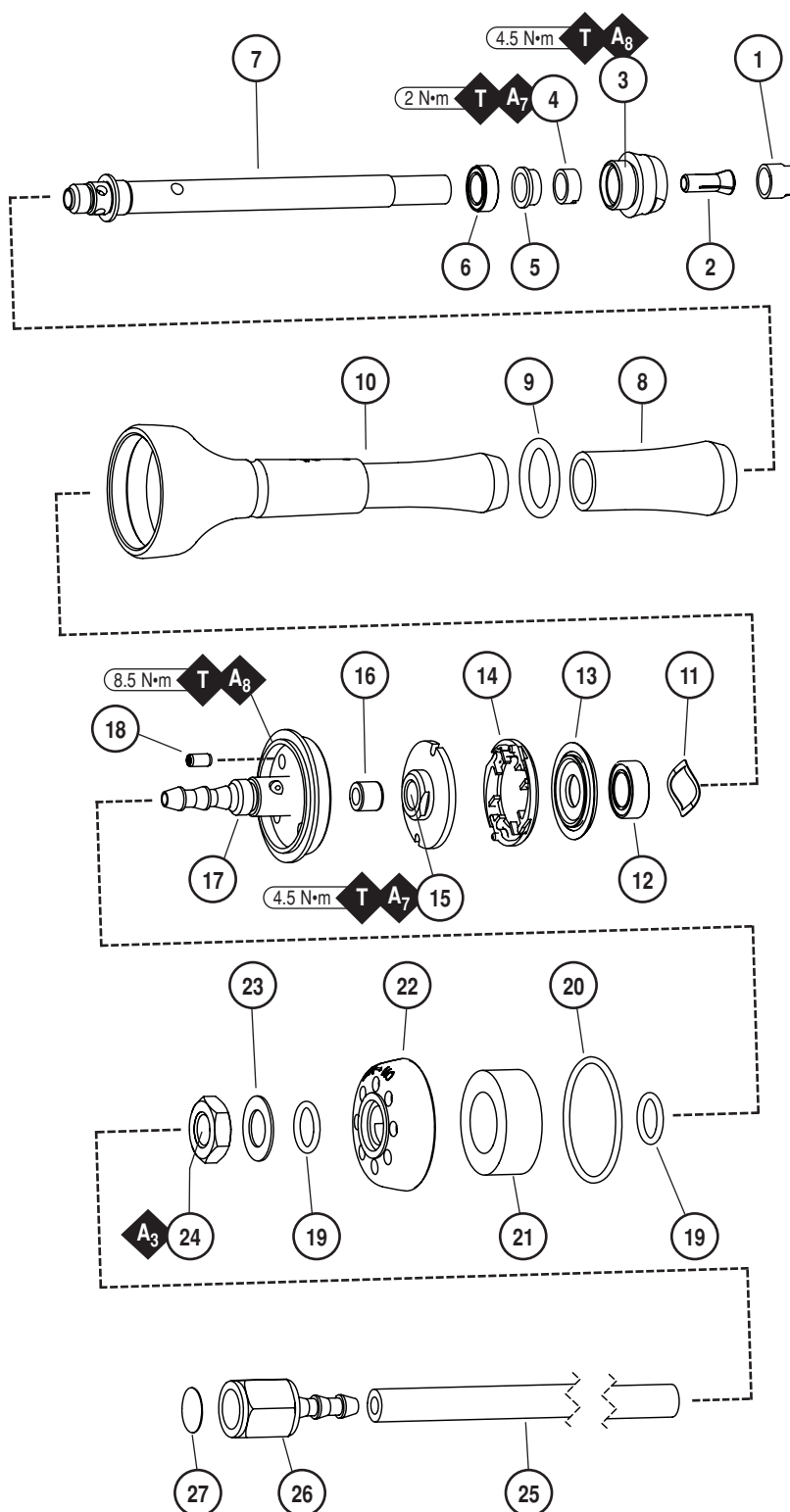
Index Key

No.	Part #	Description
1	51657	Collet Cap
2	51659	1/8" Insert
	51674	3/32" Insert
	51780	1/16" Insert
	51673	3mm Insert
3	53584	Collet Guard
4	51548	Bearing Retainer
5	94984	Spacer
6	51685	Bearing
7	53580	Drive Shaft
8	51660	Grip
9	51789	O-Ring
10		Housing
	53590	Model 51810
	53591	Model 51811
	53594	Model 51812
	53596	Model 51813
11	51661	Wave Spring
12	51686	Bearing
13	51656	Turbine Base
14	51678	Turbine
15	51655	Top Plate
16	51662	Air Bushing
17	53581	Turbine Cover
18	53585	Pin
19	95523	O-Ring (2)
20	95438	O-Ring
21	53588	Muffler
22	53582	ON/OFF Valve
23	53587	Washer
24	53586	Hex Nut
25	53589	Hose 68"
26	51269	Fitting
27	56022	Inlet Screen

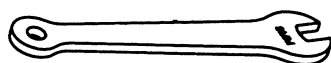
Special Repair Tools

Part #	Description
94999	Air Bushing Tool
96406	.108" Dia. Pilot Punch
96407	Brass Retainer Wrench
96408	Motor Top Plate Wrench
96418	Bearing Press Tool .623" O.D., .375" I.D.
96419	Bearing Press Tool .498" O.D., .315" I.D.
96479	Extension Brass Retainer Wrench
96483	Sleeve Assembly Bullet
96486	Collet Insert Removal Tool

Pencil Grinder Complete Assembly



51694 Shaft Lock Pin



95731 8mm Wrench.

KEY

A Adhesive: A₃ = Loctite #242
A₇ = Loctite #222
A₈ = Loctite #567

T Torque: N·m x 8.85 = In. - lbs.

Disassembly/Assembly Instructions - Pencil Grinder

(ALL THREADS ARE RIGHT HAND)

Collet Disassembly/Assembly Instructions

To Disassemble:

1. Slide **51789** O-Ring away from holes in motor housing.
2. Turn **53580** Drive Shaft until the holes in motor housing and drive shaft are aligned.
3. Slip the **51694** Shaft Lock Pin provided through both holes to lock the drive shaft.
4. Use **95731** 8mm open end wrench, to remove the **51657** Collet Cap.
5. Remove **51659**, **51673**, **51674** or **51780** Insert.

To Assemble:

1. To reduce bit runout and sticking, thoroughly clean, inspect, and polish as necessary the **51657** Collet Cap, **51659**, **51673**, **51674** or **51780** Insert.
2. Turn drive shaft until the holes in motor housing and drive shaft are aligned.
3. Slip the **51694** Shaft Lock Pin through both holes to lock the drive shaft.
4. Place **51659**, **51673**, **51674** or **51780** Insert in end of **53580** Drive Shaft. It should be a very clean fit that does not stick. If it sticks go back to step 1 above.
5. Screw on **51657** Collet Cap.
6. Slide **51789** O-Ring over holes in motor housing.

Motor Disassembly/Assembly Instructions

To Disassemble:

1. Remove **53589** Air Hose by cutting just behind the barbs on **58581** Turbine Cover.
2. Remove **53586** Jam Nut, **53582** ON/OFF Valve, **53588** Muffler, o-ring and washer.
3. Using an adjustable face pin style spanner wrench in the exhaust holes and applying a small amount of heat to the threaded area on the low setting from a heat gun, unscrew the **58581** Turbine Cover. Excessive heat will damage the turbine.
4. Using **96408** Special Repair Tool and **51694** Shaft Lock Pin unscrew the motor **51655** Top Plate. A small amount of heat may be required at this point as well. It is necessary to slide **51789** O-Ring out of the groove in the motor housing to access the shaft lock pin holes.
5. Remove the **51678** Turbine, and **51656** Turbine Base.
6. Clean all parts thoroughly. Inspect **51678** Turbine for cracks and missing molded drive pins. Inspect **51655** Top Plate and **51656** Turbine Base for flatness.

To Assemble:

1. Place **51678** Turbine on the flange on **51656** Turbine Base.
2. Place **51655** Top Plate on **51678** Turbine, inserting the turbine drive pins in the drive slots.
3. Turn **53580** Drive Shaft until the holes in motor housing and drive shaft are aligned.
4. Slip the **51694** Shaft Lock Pin through both holes to lock the drive shaft.
5. Apply a small quantity of Loctite® #222 or equivalent to the **51655** Top Plate threads.
6. Make sure that the drive pins are still engaged in the drive slots. Torque the motor assembly onto drive shaft to 4.5 N•m (40 lb.-in.), using **96408** Special Repair Tool.
7. Apply a small quantity of Loctite® #567 or equivalent to the **53581** Turbine Cover and torque to 8.5 N•m (75 lb.-in.).
8. Replace **95523** O-Ring, **53588** Muffler, **53582** ON/OFF Valve, another **95523** O-Ring and **53587** Washer. Add Loctite® #242 or equivalent to **53586** Hex Nut and tighten finger tight, so that ON/OFF Valve can be rotated.
9. Push hose firmly onto turbine cover beyond all barbs.
10. Push **51789** O-Ring into place in groove on extension of motor housing.

Bearing Replacement Instructions

To Remove:

1. Remove **51657** Collet Cap as in Collet Assembly/Disassembly above.
2. Unscrew **53584** Collet Guard. Use of a heat gun on the low setting may be necessary to soften the thread locking compound.
3. Remove **51548** Bearing Retainer and **94984** Debris Eliminator using **96407** Special Repair Tool.
4. Remove the turbine cover per Motor Disassembly/Assembly Instructions above.
5. Press **53580** Drive Shaft and motor assembly out the rear of the tool.
6. Press **51686** Upper Ceramic Bearing off the drive shaft.
7. Push the **51685** Lower Ceramic Bearing forward out of motor housing.
8. Discard bearings, do not reuse.

To Install:

1. As these are special ceramic bearings, use only Dynabrade replacement bearings.
2. Make sure that the new **51686** Upper Ceramic Bearing is a slip fit in motor housing. If not, lightly clean the bearing bore with a very fine abrasive cloth.

(continued on next page)

Disassembly/Assembly Instructions - Pencil Grinder

3. Seat new **51686** Upper Ceramic Bearing on **53580** Drive Shaft using **96406** Punch & **96418** Bushing.
4. Replace **51661** Bearing Preload Spring, and slip drive shaft, bearing assembly into motor housing.
5. Use Special Repair Tool **96406** and **96419** to seat **51685** Lower Ceramic Bearing on shaft.
6. Place **94984** Debris Eliminator on shaft.
7. Apply a small amount of Loctite® #222 to the threads and torque the **51548** Bearing Retainer to 2 N•m (18 lb.-in.), use **96407** Special Repair Tool. Avoid getting Loctite® into **51685** Lower Ceramic Bearing or on the drive shaft threaded area used by the **51657** Collet Cap.
8. **51662** Air Bushing should be replaced. Extract the old one using an easy out or other means. Push in new **51662** Air Bushing leaving approximately 1.5mm standing proud of **53581** Turbine Cover. Assemble **95523** O-Ring, **53582** ON/OFF Valve, **95523** O-Ring, **53587** Washer, **53586** Hex Nut and **53589** Hose on **53581** Turbine Cover. Screw **53581** Turbine Cover down until it bottoms on the motor housing. Back **53581** Turbine Cover off slightly and start tool. As it runs slowly tighten **53581** Turbine Cover by turning **53562** ON/OFF Valve. Let the tool run until it turns freely. Remove **53582** ON/OFF Valve. Apply Loctite® #567 sealant to **53581** Turbine Cover and torque to 8.5 N•m (75 lb.-in.). Re-Install **53562** On/Off Valve, o-ring and washer, add Loctite® #242 to **53586** Hex Nut, and tighten finger tight so on/off valve can be rotated. Allow Loctite to set.

Hose Instructions (To repair or replace damaged hose):

1. Cut through hose approximately 1" back from end of hose. Using a sharp object, utility knife, razor blade etc.
2. Pull hose off, trim off damaged area or install replacement hose, use only Dynabrade Push-Lock hose P/N's **51276** and **51277**.
3. Push hose firmly onto hose fitting beyond all barbs or until hose bottoms out against part.

Final Assembly Complete. Tool Assembly Complete.

Please allow 30 minutes for the adhesives to cure before operating tool. Important: The motor should be tested for proper operation.

Carefully connect the tool to an air supply. The tool should operate within 10% of the maximum rated RPM. The tool RPM should not exceed the maximum rated RPM with an operating air supply pressure of 90 PSIG (6.2 bar g).

Preventative Maintenance Schedule

For All 100,000 RPM Pencil Grinders

This service chart is published as a guide to expectant life of component parts. The replacement levels are based on average tool usage over one year. Dynabrade Inc. considers one year usage to be 1,000 hours.

LEGEND

X	Type of wear, no other comments apply.
L	Easily lost. Care during assembly/disassembly.
D	Easily damaged during assembly/disassembly.
R	Replace each time tool is disassembled.

Parts Common to all Models:

Index #	Part Number	Description	Number Required	High Wear 100%	Medium Wear 70%	Low Wear 30%	Non-Wear 10%
1	51657	Collet Cap	1				X
2	See Note	Insert	1				X
3	53584	Collet Guard	1				X
4	51548	Bearing Retainer	1			D	
5	94984	Spacer	1				X
6	51685	Bearing	1		X		
7	53580	Drive Shaft	1				X
8	51660	Grip	1				X
9	57189	O-Ring	1				X
10	See Note	Housing	1				X
11	51661	Wave Spring	1				X
12	51686	Bearing	1		X		
13	51656	Turbine Base	1				X
14	51678	Turbine	1				X
15	51655	Top Plate	1				X
16	51662	Air Bushing	1			R	
17	53581	Turbine Cover	1				X
18	53585	Pin	1				X
19	95523	O-Ring	2				X
20	95438	O-Ring	1				X
21	53588	Muffler*	1			X	
22	53582	ON/OFF Valve	1				X
23	53587	Washer	1				X
24	53586	Hex Nut	1				X
25	53589	Hose 68"	1		X		
26	51269	Fitting	1				X
27	56022	Inlet Screen	1				X

Note: Please refer to page 4 of tool manual for specific part number and description.

*Change at a 1,000 Hours.

Pencil Grinder Reference Tables

Note: Reprinted with permission of United Abrasives Manufacturers Association From (ANSI B7.1). For more information on other type mounted wheels refer to (ANSI B7.1) Safety requirements for use, care and protection of Abrasive wheels.

TABLE 27
GROUP W—(PLAIN WHEELS)
MAXIMUM OPERATING SPEEDS (RPM) FOR 1/8" MANDRELS

Shape No.	Wheel Diam. Inches	Wheel Thickness Inches	1/8" Overhang & Thd. Mds.	Overhang — Dimension O*			
				1"	1 1/2"	2"	2 1/2"
W 143	1/8	1/8	105,000	64,500	46,650	32,400	21,370
W 144	1/8	1/4	105,000	64,500	46,650	32,400	21,370
W 145	1/8	3/8	105,000	64,500	46,650	32,400	21,370
W 146	1/8	1/2	105,000	64,500	46,650	32,400	21,370
W 151	1/8	1/8	105,000	64,500	46,650	32,400	21,370
W 152	1/8	1/4	105,000	64,500	46,650	32,400	21,370
W 153	1/8	3/8	80,850	52,500	37,500	26,250	17,620
W 154	1/8	1/2	70,500	45,600	31,500	21,970	15,220
W 157	1/4	1/8	123,000	65,625	47,770	33,150	21,750
W 158	1/4	1/4	105,000	64,500	46,650	32,400	21,370
W 159	1/4	3/8	92,400	57,370	39,370	27,900	18,900
W 160	1/4	1/2	81,370	51,000	34,120	24,000	16,870
W 161	1/4	3/8	77,250	45,970	30,900	22,500	16,120
W 162	1/4	1/2	68,400	42,370	28,870	20,850	15,000
W 163	1/4	3/4	60,000	38,020	26,250	18,750	13,870
W 164	1/4	1	45,900	30,000	21,750	15,900	11,850
W 165	1/8	1/8	107,400	62,470	41,250	29,250	20,250
W 166	1/8	1/4	96,970	57,000	35,620	25,120	18,000
W 167	1/8	3/8	75,000	45,750	31,120	22,500	15,750
W 168	1/8	1/2	68,400	41,770	28,650	21,000	15,000
W 169	1/8	3/8	61,650	37,720	27,000	19,870	14,250
W 170	1/8	1/2	52,500	33,000	23,020	16,650	12,600
W 171	1/8	3/4	37,120	25,500	18,750	14,620	10,020
W 172	3/8	1/8	99,370	59,250	41,020	29,250	20,250
W 173	3/8	1/4	87,600	53,250	35,250	24,750	17,250
W 174	3/8	3/8	69,000	41,250	27,750	20,400	15,000
W 175	3/8	1/2	54,000	33,000	24,150	18,000	13,500
W 176	3/8	3/4	45,370	28,500	21,000	15,900	12,150
W 177	3/8	1	33,750	23,250	17,620	13,650	10,350
W 178	3/8	1	26,250	18,750	14,250	10,870	8,250
W 181	1/2	1/8	76,390	55,500	36,750	25,500	17,850
W 182	1/2	1/4	73,500	43,650	29,100	20,770	15,450
W 183	1/2	3/8	51,750	31,870	22,500	17,250	12,900
W 184	1/2	1/2	41,020	26,400	19,500	15,000	11,400
W 185	1/2	3/4	34,500	22,500	16,870	13,120	9,900
W 186	1/2	1	26,250	17,400	12,750	9,750	8,020
W 187	1/2	1	20,620	13,870	10,120	7,870	6,370
W 190	5/8	1/8	61,120	48,000	31,500	22,650	16,870
W 191	5/8	1/4	58,870	34,500	25,120	18,900	14,250
W 192	5/8	3/8	43,120	27,370	19,870	15,220	11,620
W 193	5/8	1/2	32,250	23,020	16,500	12,520	9,750
W 194	5/8	3/4	29,400	19,120	13,500	10,500	8,250
W 195	5/8	1	22,120	14,250	10,120	7,650	6,150
W 196	5/8	1	17,620	11,620	8,100	6,150	5,100
W 199	3/4	1/8	50,930	44,770	30,000	21,750	15,750
W 200	3/4	1/4	50,930	33,520	23,850	17,850	13,350
W 201	3/4	3/8	38,250	24,370	17,400	13,270	9,970
W 202	3/4	1/2	30,600	19,500	13,500	10,120	7,800
W 203	3/4	3/4	25,500	15,900	10,870	8,250	6,600
W 204	3/4	1	18,900	12,000	8,400	6,220	5,250
W 210	7/8	1/8	43,650	35,250	25,720	18,900	14,320
W 211	7/8	1/4	43,650	27,900	20,400	15,820	12,220
W 212	7/8	3/8	33,750	20,400	14,400	11,020	9,000
W 213	7/8	1/2	27,000	16,870	11,250	8,250	6,600
W 215	1	1/8	38,200	24,900	18,000	13,870	10,500
W 216	1	1/4	30,520	18,600	12,750	9,520	7,500

*See Figure 47

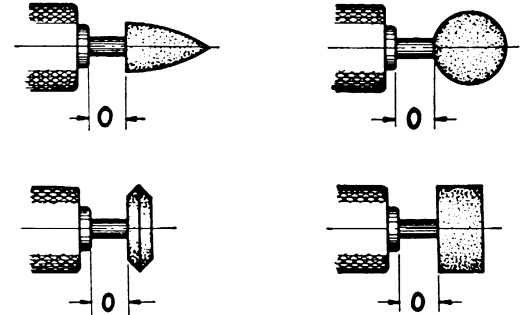


FIGURE NO. 47
Dimension "O" indicates overhang of mandrel.

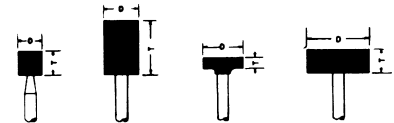


ILLUSTRATION No. 80
MOUNTED WHEELS
STANDARD SHAPES
GROUP "W"

Optional Accessories

FIND THE MOST CURRENT OFFERING OF SUPPORT DOCUMENTS AND ACCESSORIES @ WWW.DYNABRADE.COM



Model 11402: 40 SCFM @ 100 PSIG
3/8" NPT Female ports.

- Filter-Regulator, provides accurate air pressure regulation and two stage filtration of water/contaminates.



Model 93351

- 1/8" Carbide Burr Kit, Includes 12 burrs for grinding, deburring, and finishing metal.

Machine Specifications

Model Number	Motor RPM	Sound Level	Maximum Air Flow CFM/SCFM (LPM)	Air Pressure PSIG (Bars)	Collet Size	Weight Pound (kg)	Length Inch (mm)	Height Inch (mm)
51810	100,000	75 dB(A)	1/6 (170)	90 (6.2)	1/8"	.84 (.38)	5-5/16 (135)	1-1/2 (37)
51811	100,000	75 dB(A)	1/6 (170)	90 (6.2)	1/16"	.84 (.38)	5-5/16 (135)	1-1/2 (37)
51812	100,000	75 dB(A)	1/6 (170)	90 (6.2)	3/32"	.84 (.38)	5-5/16 (135)	1-1/2 (37)
51813	100,000	75 dB(A)	1/6 (170)	90 (6.2)	3mm	.84 (.38)	5-5/16 (135)	1-1/2 (37)

Additional Specifications: Air Inlet Thread 1/4" NPT • Hose Size 1/4" (6mm)

Sound Level is the pressure measurement according to the method outlined in ISO regulation ISO-15744

Reference Contact Information

1. American National Safety Institute – ANSI

25 West 43rd Street
Forth Floor
New York, NY 10036
Tel: 1 (212) 642-4900
Fax: 1 (212) 398-0023

3. European Committee for Standardization

Rue de Stassart 36
B - 1050 Brussels, Belgium

2. Government Printing Office – GPO

Superintendent of Documents
Attn. New Orders
P.O. Box 371954
Pittsburgh, PA 15250-7954
Tel: 1 (202) 512-1803



Visit Our Web Site: www.dynabrade.com

Email: Customer.Service@Dynabrade.com

DYNABRADE, INC., 8989 Sheridan Drive • Clarence, NY 14031-1490 • Phone: (716) 631-0100 • Fax: 716-631-2073 • International Fax: 716-631-2524
DYNABRADE EUROPE S.à.r.l., Zone Artisanale • L-5485 Wormeldange—Haut, Luxembourg • Telephone: 352 76 84 94 1 • Fax: 352 76 84 95 1